

## ARG43906 anti-NFE2 antibody

Package: 50 µg  
Store at: -20°C

### Summary

Product Description	Rabbit Polyclonal antibody recognizes NFE2
Tested Reactivity	Hu
Tested Application	ELISA, WB
Host	Rabbit
Clonality	Polyclonal
Isotype	IgG
Target Name	NFE2
Species	Human
Immunogen	Human NFE2 recombinant protein
Conjugation	Un-conjugated
Alternate Names	NFE2; Nuclear Factor, Erythroid 2; NF-E2; Nuclear Factor, Erythroid-Derived 2 45 KDa Subunit; Transcription Factor NF-E2 45 KDa Subunit; Leucine Zipper Protein NF-E2; P45 NF-E2; P45

### Application Instructions

Application table	Application	Dilution
	ELISA	0.1-0.5 µg/ml
	WB	0.25-0.5 µg/ml
Application Note	* The dilutions indicate recommended starting dilutions and the optimal dilutions or concentrations should be determined by the scientist.	

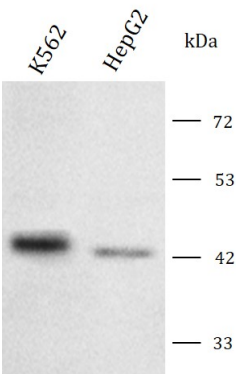
### Properties

Form	Liquid
Purification	Affinity purified with Immunogen.
Buffer	0.9% NaCl, 0.2% Na2HPO4 and 4% Trehalose.
Stabilizer	4% Trehalose
Concentration	0.5 mg/ml
Storage instruction	For continuous use, store undiluted antibody at 2-8°C for up to a week. For long-term storage, aliquot and store at -20°C or below. Storage in frost free freezers is not recommended. Avoid repeated freeze/thaw cycles. Suggest spin the vial prior to opening. The antibody solution should be gently mixed before use.
Note	For laboratory research only, not for drug, diagnostic or other use.

Bioinformation

Gene Symbol	NFE2
Gene Full Name	Nuclear Factor, Erythroid 2
Background	Enables several functions, including WW domain binding activity; identical protein binding activity; and protein N-terminus binding activity. Contributes to cis-regulatory region sequence-specific DNA binding activity. Predicted to be involved in regulation of transcription by RNA polymerase II. Predicted to act upstream of or within several processes, including labyrinthine layer blood vessel development; negative regulation of bone mineralization; and negative regulation of syncytium formation by plasma membrane fusion. Part of protein-DNA complex.
Function	Component of the NF-E2 complex essential for regulating erythroid and megakaryocytic maturation and differentiation. Binds to the hypersensitive site 2 (HS2) of the beta-globin control region (LCR). This subunit (NFE2) recognizes the TCAT/C sequence of the AP-1-like core palindrome present in a number of erythroid and megakaryocytic gene promoters. Requires MAFK or other small MAF proteins for binding to the NF-E2 motif. May play a role in all aspects of hemoglobin production from globin and heme synthesis to procurement of iron.
Calculated Mw	42 kDa
PTM	Isopeptide bond, Phosphoprotein, Ubl conjugation
Cellular Localization	Cytoplasm, Nucleus

Images



ARG43906 anti-NFE2 antibody WB image

Western blot: K562 and HepG2 stained with ARG43906 anti-NFE2 antibody at 0.5 µg/mL dilution.