

## ARG43924 anti-POLR1C antibody

Package: 50 µg  
Store at: -20°C

### Summary

Product Description	Rabbit Polyclonal antibody recognizes POLR1C
Tested Reactivity	Hu
Tested Application	ELISA, FACS, WB
Host	Rabbit
Clonality	Polyclonal
Isotype	IgG
Target Name	POLR1C
Species	Human
Immunogen	Human POLR1C recombinant protein
Conjugation	Un-conjugated
Alternate Names	POLR1C; RNA Polymerase I And III Subunit C; RPA40; RPA39; RPC40; AC40; RPAC1; RPA5; DNA-Directed RNA Polymerases I And III 40 KDa Polypeptide; DNA-Directed RNA Polymerases I And III Subunit RPAC1; Polymerase (RNA) I Polypeptide C, 30kDa; DNA-Directed RNA Polymerase I Subunit C; RNA Polymerases I And III Subunit AC1; RNA Polymerase I Subunit C; Polymerase (RNA) I Subunit C; POLR1E; HLD11; TC

### Application Instructions

Application table	Application	Dilution
	ELISA	0.1-0.5 µg/ml
	FACS	1-3 µg/1x10 <sup>6</sup> cells
	WB	0.25-0.5 µg/ml
Application Note	* The dilutions indicate recommended starting dilutions and the optimal dilutions or concentrations should be determined by the scientist.	

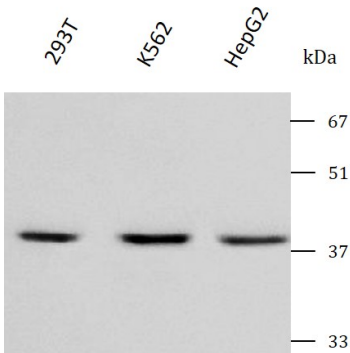
### Properties

Form	Liquid
Purification	Affinity purified with Immunogen.
Buffer	0.9% NaCl, 0.2% Na <sub>2</sub> HPO <sub>4</sub> and 4% Trehalose.
Stabilizer	4% Trehalose
Concentration	0.5 mg/ml
Storage instruction	For continuous use, store undiluted antibody at 2-8°C for up to a week. For long-term storage, aliquot and store at -20°C or below. Storage in frost free freezers is not recommended. Avoid repeated freeze/thaw cycles. Suggest spin the vial prior to opening. The antibody solution should be gently mixed before use.

Bioinformation

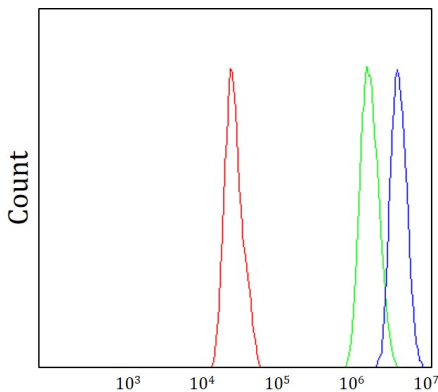
Gene Symbol	POLR1C
Gene Full Name	RNA Polymerase I And III Subunit C
Background	The protein encoded by this gene is a subunit of both RNA polymerase I and RNA polymerase III complexes. The encoded protein is part of the Pol core element. Mutations in this gene have been associated with Treacher Collins syndrome (TCS) and hypomyelinating leukodystrophy 11. Alternative splicing results in multiple transcript variants.
Function	DNA-dependent RNA polymerase catalyzes the transcription of DNA into RNA using the four ribonucleoside triphosphates as substrates. Common component of RNA polymerases I and III which synthesize ribosomal RNA precursors and small RNAs, such as 5S rRNA and tRNAs, respectively. RPAC1 is part of the Pol core element with the central large cleft and probably a clamp element that moves to open and close the cleft.
Calculated Mw	39 kDa
PTM	Acetylation, Phosphoprotein
Cellular Localization	DNA-directed RNA polymerase, Nucleus

Images



ARG43924 anti-POLR1C antibody WB image

Western blot: 293T, K562 and RT4 stained withARG43924 anti-POLR1C antibody at 0.5 µg/mL dilution.



ARG43924 anti-POLR1C antibody FACS image

Flow Cytometry: RT4 cells stained withARG43924 anti-POLR1C antibody (blue) at 1 µg/1x10<sup>6</sup> cells dilution.