

ARG43926 anti-PPP1R9A antibody

Package: 50 µg
Store at: -20°C

Summary

Product Description	Rabbit Polyclonal antibody recognizes PPP1R9A
Tested Reactivity	Hu
Tested Application	ELISA, FACS, WB
Host	Rabbit
Clonality	Polyclonal
Isotype	IgG
Target Name	PPP1R9A
Species	Human
Immunogen	Human PPP1R9A recombinant protein
Conjugation	Un-conjugated
Alternate Names	PPP1R9A; Protein Phosphatase 1 Regulatory Subunit 9A; Neurabin-I; KIAA1222; Protein Phosphatase 1, Regulatory (Inhibitor) Subunit 9A; Neural Tissue-Specific F-Actin-Binding Protein I; Neurabin-1; FLJ20068; Protein Phosphatase 1, Regulatory Subunit 9A; NRB1; NRBI

Application Instructions

Application table	Application	Dilution
	ELISA	0.1-0.5 µg/ml
	FACS	1-3 µg/1x10 ⁶ cells
	WB	0.25-0.5 µg/ml
Application Note	* The dilutions indicate recommended starting dilutions and the optimal dilutions or concentrations should be determined by the scientist.	

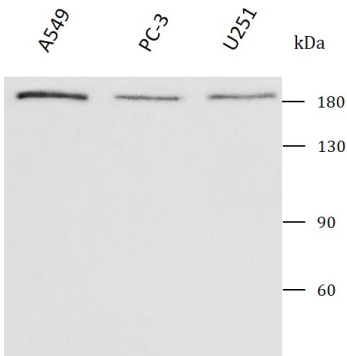
Properties

Form	Liquid
Purification	Affinity purified with Immunogen.
Buffer	0.9% NaCl, 0.2% Na ₂ HPO ₄ and 4% Trehalose.
Stabilizer	4% Trehalose
Concentration	0.5 mg/ml
Storage instruction	For continuous use, store undiluted antibody at 2-8°C for up to a week. For long-term storage, aliquot and store at -20°C or below. Storage in frost free freezers is not recommended. Avoid repeated freeze/thaw cycles. Suggest spin the vial prior to opening. The antibody solution should be gently mixed before use.
Note	For laboratory research only, not for drug, diagnostic or other use.

Bioinformation

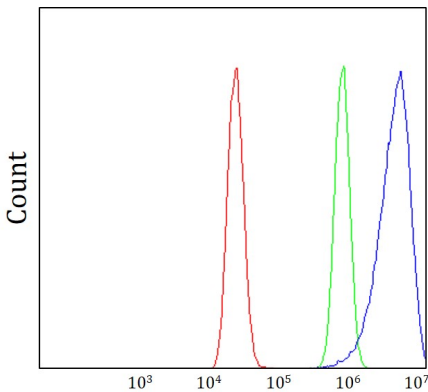
Gene Symbol	PPP1R9A
Gene Full Name	Protein Phosphatase 1 Regulatory Subunit 9A
Background	This gene is imprinted, and located in a cluster of imprinted genes on chromosome 7q12. This gene is transcribed in both neuronal and multiple embryonic tissues, and it is maternally expressed mainly in embryonic skeletal muscle tissues and biallelically expressed in other embryonic tissues. The protein encoded by this gene includes a PDZ domain and a sterile alpha motif (SAM). It is a regulatory subunit of protein phosphatase I, and controls actin cytoskeleton reorganization. Alternatively spliced transcript variants encoding different isoforms have been found for this gene.
Function	Binds to actin filaments (F-actin) and shows cross-linking activity. Binds along the sides of the F-actin. May be involved in neurite formation. Inhibits protein phosphatase 1-alpha activity (By similarity).
Calculated Mw	123 kDa
PTM	Phosphoprotein
Cellular Localization	Cytoplasm, Cytoskeleton, Synapse, Synaptosome

Images



ARG43926 anti-PPP1R9A antibody WB image

Western blot: A549, PC-3 and U251 stained with ARG43926 anti-PPP1R9A antibody at 0.5 µg/mL dilution.



ARG43926 anti-PPP1R9A antibody FACS image

Flow Cytometry: MCF-7 cells stained with ARG43926 anti-PPP1R9A antibody (blue) at 1 µg/1x10^6 cells dilution.