

ARG43927 anti-B56 beta antibody

Package: 50 µg
Store at: -20°C

Summary

| | |
|---------------------|--|
| Product Description | Rabbit Polyclonal antibody recognizes B56 beta |
| Tested Reactivity | Hu |
| Tested Application | ELISA, FACS, WB |
| Host | Rabbit |
| Clonality | Polyclonal |
| Isotype | IgG |
| Target Name | B56 beta |
| Species | Human |
| Immunogen | Human B56 beta recombinant protein |
| Conjugation | Un-conjugated |
| Alternate Names | PPP2R5B; Protein Phosphatase 2 Regulatory Subunit B'Beta; B56beta; PR61B; B56B; Serine/Threonine-Protein Phosphatase 2A 56 KDa Regulatory Subunit Beta Isoform; FLJ35411; Serine/Threonine Protein Phosphatase 2A, 56 KDa Regulatory Subunit, Beta Isoform; Protein Phosphatase 2, Regulatory Subunit B (B56), Beta Isoform; Protein Phosphatase 2 Regulatory Subunit B', Beta; PP2A, B Subunit, PR61 Beta Isoform; PP2A, B Subunit, B56 Beta Isoform; PP2A, B Subunit, B' Beta Isoform; PP2A, B Subunit, R5 Beta Isoform; PP2A B Subunit Isoform PR61-Beta; PP2A B Subunit Isoform B56-Beta; PP2A B Subunit Isoform B'-Beta; PP2A B Subunit Isoform R5-Beta |

Application Instructions

| | | |
|-------------------|--|--------------------------------|
| Application table | Application | Dilution |
| | ELISA | 0.1-0.5 µg/ml |
| | FACS | 1-3 µg/1x10 ⁶ cells |
| | WB | 0.25-0.5 µg/ml |
| Application Note | * The dilutions indicate recommended starting dilutions and the optimal dilutions or concentrations should be determined by the scientist. | |

Properties

| | |
|---------------------|---|
| Form | Liquid |
| Purification | Affinity purified with Immunogen. |
| Buffer | 0.9% NaCl, 0.2% Na ₂ HPO ₄ and 4% Trehalose. |
| Stabilizer | 4% Trehalose |
| Concentration | 0.5 mg/ml |
| Storage instruction | For continuous use, store undiluted antibody at 2-8°C for up to a week. For long-term storage, aliquot and store at -20°C or below. Storage in frost free freezers is not recommended. Avoid repeated |

freeze/thaw cycles. Suggest spin the vial prior to opening. The antibody solution should be gently mixed before use.

Note

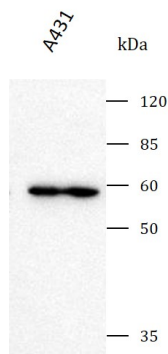
For laboratory research only, not for drug, diagnostic or other use.

Bioinformation

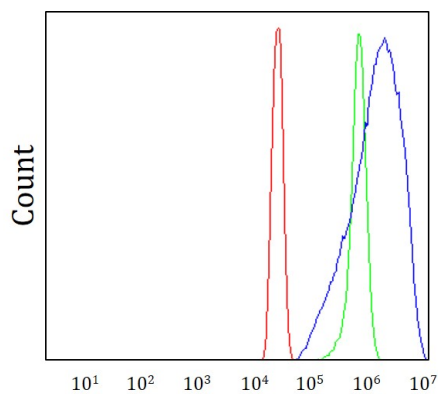
| | |
|-----------------------|---|
| Gene Symbol | PPP2R5B |
| Gene Full Name | Protein Phosphatase 2 Regulatory Subunit B'Beta |
| Background | The product of this gene belongs to the phosphatase 2A regulatory subunit B family. Protein phosphatase 2A is one of the four major Ser/Thr phosphatases, and it is implicated in the negative control of cell growth and division. It consists of a common heteromeric core enzyme, which is composed of a catalytic subunit and a constant regulatory subunit, that associates with a variety of regulatory subunits. The B regulatory subunit might modulate substrate selectivity and catalytic activity. This gene encodes a beta isoform of the regulatory subunit B56 subfamily. |
| Function | As the regulatory component of the serine/threonine-protein phosphatase 2A (PP2A) holoenzyme, modulates substrate specificity, subcellular localization, and responsiveness to phosphorylation. The phosphorylated form mediates the interaction between PP2A and AKT1, leading to AKT1 dephosphorylation. |
| Calculated Mw | 57 kDa |
| PTM | Phosphoprotein, Ubl conjugation |
| Cellular Localization | Cytoplasm |

Images

ARG43927 anti-B56 beta antibody WB image



Western blot: A431 stained with ARG43927 anti-B56 beta antibody at 0.5 µg/mL dilution.



ARG43927 anti-B56 beta antibody FACS image

Flow Cytometry: SiHa cells stained with ARG43927 anti-B56 beta antibody (blue) at 1 µg/1x10⁶ cells dilution.

ARG43927 anti-B56 beta antibody WB image

Western blot: PC-3 stained with ARG43927 anti-B56 beta antibody at 0.5 µg/mL dilution.

