

ARG43937 anti-OVOL2 antibody

Package: 50 µg
Store at: -20°C

Summary

Product Description	Rabbit Polyclonal antibody recognizes OVOL2
Tested Reactivity	Hu
Tested Application	ELISA, FACS, ICC/IF, WB
Host	Rabbit
Clonality	Polyclonal
Isotype	IgG
Target Name	OVOL2
Species	Human
Immunogen	Human OVOL2 recombinant protein
Conjugation	Un-conjugated
Alternate Names	OVOL2; Ovo Like Zinc Finger 2; Zinc Finger Protein 339; ZNF339; CHED; Corneal Endothelial Dystrophy 1 (Autosomal Dominant); Transcription Factor Ovo-Like 2; BA504H3.3; HOVO2; CHED1; Ovo-Like 2 (Drosophila); EUROIMAGE566589; CHED2; PPCD1; HOvo2

Application Instructions

Application table	Application	Dilution
	ELISA	0.1-0.5 µg/ml
	FACS	1-3 µg/1x10 ⁶ cells
	ICC/IF	5 µg/ml
	WB	0.25-0.5 µg/ml
Application Note	* The dilutions indicate recommended starting dilutions and the optimal dilutions or concentrations should be determined by the scientist.	

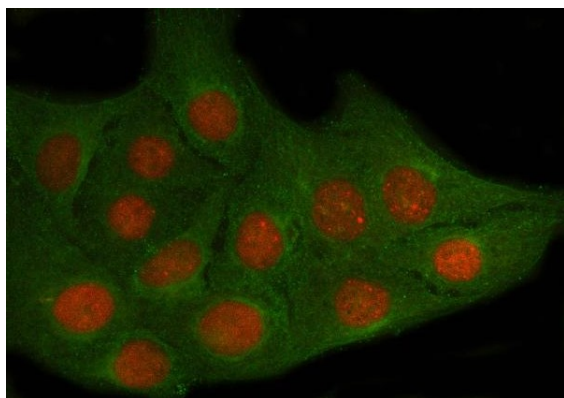
Properties

Form	Liquid
Purification	Affinity purified with Immunogen.
Buffer	0.9% NaCl, 0.2% Na ₂ HPO ₄ and 4% Trehalose.
Stabilizer	4% Trehalose
Concentration	0.5 mg/ml
Storage instruction	For continuous use, store undiluted antibody at 2-8°C for up to a week. For long-term storage, aliquot and store at -20°C or below. Storage in frost free freezers is not recommended. Avoid repeated freeze/thaw cycles. Suggest spin the vial prior to opening. The antibody solution should be gently mixed before use.

Bioinformation

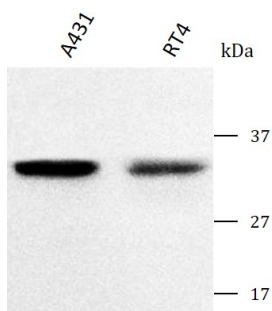
Gene Symbol	OVOL2
Gene Full Name	Ovo Like Zinc Finger 2
Background	This gene encodes a member of the evolutionarily conserved ovo-like protein family. Mammalian members of this family contain a single zinc finger domain composed of a tetrad of C2H2 zinc fingers with variable N- and C-terminal extensions that contain intrinsically disordered domains. Members of this family are involved in epithelial development and differentiation. Knockout of this gene in mouse results in early embryonic lethality with phenotypes that include neurectoderm expansion, impaired vascularization, and heart anomalies. In humans, allelic variants of this gene have been associated with posterior polymorphous corneal dystrophy.
Function	Plays dual functions in thermogenesis and adipogenesis to maintain energy balance. Essential for brown/beige adipose tissue-mediated thermogenesis, is necessary for the development of brown adipocytes. In white adipose tissues, limits adipogenesis by blocking CEBPA binding to its transcriptional targets and inhibiting its transcription factor activity.
Calculated Mw	30 kDa
PTM	Phosphoprotein
Cellular Localization	Nucleus

Images



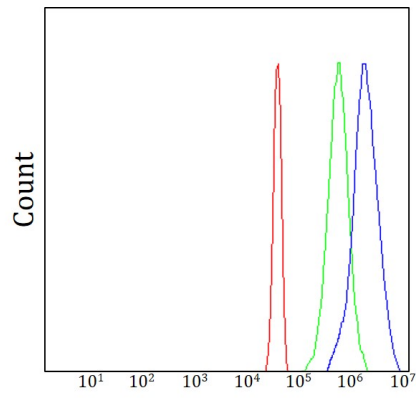
ARG43937 anti-OVOL2 antibody ICC/IF image

Immunofluorescence: U2OS cells stained with ARG43937 anti-OVOL2 antibody at 5 µg/ml dilution.



ARG43937 anti-OVOL2 antibody WB image

Western blot: A431 and RT4 stained with ARG43937 anti-OVOL2 antibody at 0.5 µg/mL dilution.



ARG43937 anti-OVOL2 antibody FACS image

Flow Cytometry: Jk cells stained with ARG43937 anti-OVOL2 antibody (blue) at $1\text{ }\mu\text{g}/1\times 10^6$ cells dilution.