

ARG43943 anti-PLET1 antibody

Package: 50 µg
Store at: -20°C

Summary

Product Description	Rabbit Polyclonal antibody recognizes PLET1
Tested Reactivity	Hu
Tested Application	ELISA, FACS, WB
Host	Rabbit
Clonality	Polyclonal
Isotype	IgG
Target Name	PLET1
Species	Human
Immunogen	Human PLET1 recombinant protein
Conjugation	Un-conjugated
Alternate Names	PLET1; Placenta Expressed Transcript 1; C11orf34; Placenta-Expressed Transcript 1 Protein; Chromosome 11 Open Reading Frame 34; Placenta-Expressed Transcript 1

Application Instructions

Application table	Application	Dilution
	ELISA	0.1-0.5 µg/ml
	FACS	1-3 µg /1x10 ⁶ cells
	WB	0.25-0.5 µg/ml
Application Note	* The dilutions indicate recommended starting dilutions and the optimal dilutions or concentrations should be determined by the scientist.	

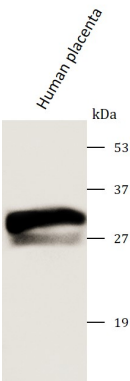
Properties

Form	Liquid
Purification	Affinity purified with Immunogen.
Buffer	0.9% NaCl, 0.2% Na ₂ HPO ₄ and 4% Trehalose.
Stabilizer	4% Trehalose
Concentration	0.5 mg/ml
Storage instruction	For continuous use, store undiluted antibody at 2-8°C for up to a week. For long-term storage, aliquot and store at -20°C or below. Storage in frost free freezers is not recommended. Avoid repeated freeze/thaw cycles. Suggest spin the vial prior to opening. The antibody solution should be gently mixed before use.
Note	For laboratory research only, not for drug, diagnostic or other use.

Bioinformation

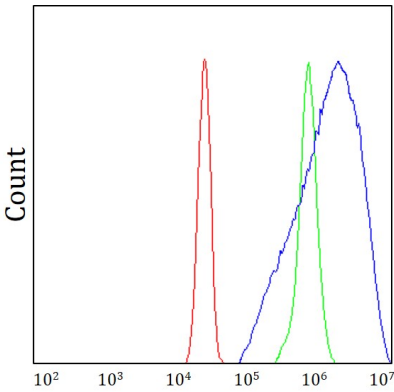
Gene Symbol	PLET1
Gene Full Name	Placenta Expressed Transcript 1
Background	Predicted to be involved in negative regulation of cell-matrix adhesion; positive regulation of cell migration; and wound healing, spreading of epidermal cells. Predicted to be located in extracellular region and plasma membrane. Predicted to be active in apical plasma membrane and external side of plasma membrane.
Function	Modulates leading keratinocyte migration and cellular adhesion to matrix proteins during a wound-healing response and promotes wound repair. May play a role during trichilemmal differentiation of the hair follicle.
Calculated Mw	23 kDa
PTM	Glycoprotein, GPI-anchor, Lipoprotein
Cellular Localization	Cell membrane, Membrane

Images



ARG43943 anti-PLET1 antibody WB image

Western blot: Human placenta stained with ARG43943 anti-PLET1 antibody at 0.5 µg/mL dilution.



ARG43943 anti-PLET1 antibody FACS image

Flow Cytometry: SiHa cells stained with ARG43943 anti-PLET1 antibody (blue) at 1 µg/1x10⁶ cells dilution.