

ARG43944 anti-PLLP antibody

Package: 50 µg
Store at: -20°C

Summary

Product Description	Rabbit Polyclonal antibody recognizes PLLP
Tested Reactivity	Hu
Tested Application	ELISA, FACS, WB
Host	Rabbit
Clonality	Polyclonal
Isotype	IgG
Target Name	PLLP
Species	Human
Immunogen	Human PLLP recombinant protein
Conjugation	Un-conjugated
Alternate Names	PLLP; Plasmolipin; PMLP; TM4SF11; Transmembrane 4 Superfamily Member 11 (Plasmolipin); Plasma Membrane Proteolipid (Plasmolipin); Plasma Membrane Proteolipi

Application Instructions

Application table	Application	Dilution
	ELISA	0.1-0.5 µg/ml
	FACS	1-3 µg /1x10 ⁶ cells
	WB	0.25-0.5 µg/ml
Application Note	* The dilutions indicate recommended starting dilutions and the optimal dilutions or concentrations should be determined by the scientist.	

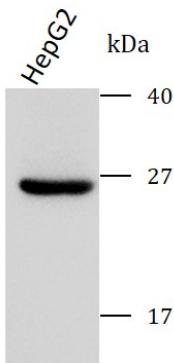
Properties

Form	Liquid
Purification	Affinity purified with Immunogen.
Buffer	0.9% NaCl, 0.2% Na ₂ HPO ₄ and 4% Trehalose.
Stabilizer	4% Trehalose
Concentration	0.5 mg/ml
Storage instruction	For continuous use, store undiluted antibody at 2-8°C for up to a week. For long-term storage, aliquot and store at -20°C or below. Storage in frost free freezers is not recommended. Avoid repeated freeze/thaw cycles. Suggest spin the vial prior to opening. The antibody solution should be gently mixed before use.
Note	For laboratory research only, not for drug, diagnostic or other use.

Bioinformation

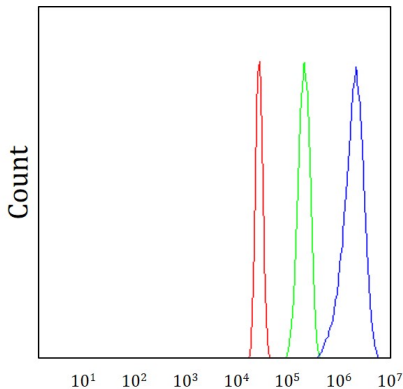
Gene Symbol	PLLP
Gene Full Name	Plasmolipin
Background	Predicted to be a structural constituent of myelin sheath. Predicted to be involved in myelination. Predicted to be located in compact myelin and membrane raft. Predicted to be integral component of membrane. Biomarker of schizophrenia.
Function	Appears to be involved in myelination. Could also participate in ion transport events as addition of plasmolipin to lipid bilayers induces the formation of ion channels, which are voltage-dependent and K+-selective.
Calculated Mw	20 kDa
PTM	Phosphoprotein
Cellular Localization	Membrane

Images



ARG43944 anti-PLLP antibody WB image

Western blot: HepG2 stained with ARG43944 anti-PLLP antibody at 0.5 µg/mL dilution.



ARG43944 anti-PLLP antibody FACS image

Flow Cytometry: HepG2 cells stained with ARG43944 anti-PLLP antibody (blue) at 1 µg/1x10⁶ cells dilution.