

ARG43946 anti-PNLIPRP2 antibody

Package: 50 µg
Store at: -20°C

Summary

Product Description	Rabbit Polyclonal antibody recognizes PNLIPRP2
Tested Reactivity	Hu
Tested Application	ELISA, FACS, ICC/IF, WB
Host	Rabbit
Clonality	Polyclonal
Isotype	IgG
Target Name	PNLIPRP2
Species	Human
Immunogen	Human PNLIPRP2 recombinant protein
Conjugation	Un-conjugated
Alternate Names	PNLIPRP2; Pancreatic Lipase Related Protein 2 (Gene/Pseudogene); PLRP2; Pancreatic Lipase-Related Protein 2; Cytotoxic T Lymphocyte Lipase; Triacylglycerol Lipase; Galactolipase; EC 3.1.1.3; Pancreatic Lipase Related Protein 2; EC 3.1.1.26; EC 3.1.1; PL-RP2

Application Instructions

Application table	Application	Dilution
	ELISA	0.1-0.5 µg/ml
	FACS	1-3 µg /1x10 ⁶ cells
	ICC/IF	5 µg/ml
	WB	0.25-0.5 µg/ml
Application Note	* The dilutions indicate recommended starting dilutions and the optimal dilutions or concentrations should be determined by the scientist.	

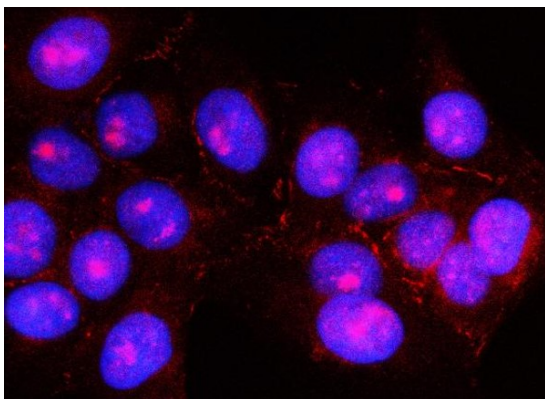
Properties

Form	Liquid
Purification	Affinity purified with Immunogen.
Buffer	0.9% NaCl, 0.2% Na ₂ HPO ₄ and 4% Trehalose.
Stabilizer	4% Trehalose
Concentration	0.5 mg/ml
Storage instruction	For continuous use, store undiluted antibody at 2-8°C for up to a week. For long-term storage, aliquot and store at -20°C or below. Storage in frost free freezers is not recommended. Avoid repeated freeze/thaw cycles. Suggest spin the vial prior to opening. The antibody solution should be gently mixed before use.

Bioinformation

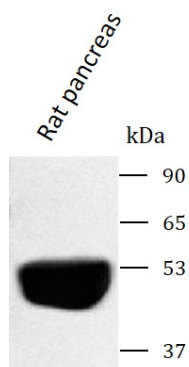
Gene Symbol	PNLIPRP2
Gene Full Name	Pancreatic Lipase Related Protein 2 (Gene/Pseudogene)
Background	This gene encodes a lipase that hydrolyzes galactolipids, the main components of plant membrane lipids. An allelic polymorphism in this gene results in both coding and non-coding variants; the reference genome represents the non-coding allele.
Function	Lipase that primarily hydrolyzes triglycerides and galactosylglycerides.
Calculated Mw	52 kDa
PTM	Disulfide bond, Glycoprotein
Cellular Localization	Cell projection, Cytoplasmic vesicle, Membrane, Secreted

Images



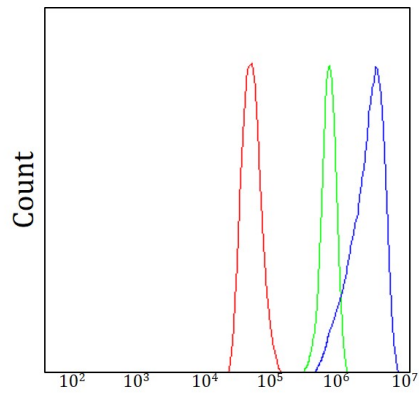
ARG43946 anti-PNLIPRP2 antibody ICC/IF image

Immunofluorescence: U2OS cells stained with ARG43946 anti-PNLIPRP2 antibody at 5 µg/ml dilution.



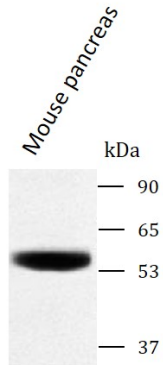
ARG43946 anti-PNLIPRP2 antibody WB image

Western blot: Rat pancreas stained with ARG43946 anti-PNLIPRP2 antibody at 0.5 µg/mL dilution.



ARG43946 anti-PNLIPRP2 antibody FACS image

Flow Cytometry: Hela cells stained with ARG43946 anti-PNLIPRP2 antibody (blue) at $1\text{ }\mu\text{g}/1\times 10^6$ cells dilution.



ARG43946 anti-PNLIPRP2 antibody WB image

Western blot: Mouse pancreas stained with ARG43946 anti-PNLIPRP2 antibody at $0.5\text{ }\mu\text{g}/\text{mL}$ dilution.