

ARG43947 anti-POLR3GL antibody

Package: 50 µg
Store at: -20°C

Summary

| | |
|---------------------|--|
| Product Description | Rabbit Polyclonal antibody recognizes POLR3GL |
| Tested Reactivity | Hu |
| Tested Application | ELISA, ICC/IF, WB |
| Host | Rabbit |
| Clonality | Polyclonal |
| Isotype | IgG |
| Target Name | POLR3GL |
| Species | Human |
| Immunogen | Human POLR3GL recombinant protein |
| Conjugation | Un-conjugated |
| Alternate Names | POLR3GL; RNA Polymerase III Subunit GL; Flj32422; Polymerase (RNA) III (DNA Directed) Polypeptide G (32kD)-Like; DNA-Directed RNA Polymerase III Subunit RPC7-Like; DNA-Directed RNA Polymerase III Subunit G-Like; RNA Polymerase III 32 KDa Beta Subunit; RNA Polymerase III Subunit C7-Like; RNA Polymerase III Subunit G Like; RPC32-Beta; MGC3200; Alternative RNA Polymerase III Subunit 32; Polymerase (RNA) III Subunit G Like; RPC32-Like Protein; RPC32HOM; SOFM |

Application Instructions

| Application table | Application | Dilution |
|-------------------|--|----------------|
| | ELISA | 0.1-0.5 µg/ml |
| | ICC/IF | 5 µg/ml |
| | WB | 0.25-0.5 µg/ml |
| Application Note | * The dilutions indicate recommended starting dilutions and the optimal dilutions or concentrations should be determined by the scientist. | |

Properties

| | |
|---------------------|--|
| Form | Liquid |
| Purification | Affinity purified with Immunogen. |
| Buffer | 0.9% NaCl, 0.2% Na ₂ HPO ₄ and 4% Trehalose. |
| Stabilizer | 4% Trehalose |
| Concentration | 0.5 mg/ml |
| Storage instruction | For continuous use, store undiluted antibody at 2-8°C for up to a week. For long-term storage, aliquot and store at -20°C or below. Storage in frost free freezers is not recommended. Avoid repeated freeze/thaw cycles. Suggest spin the vial prior to opening. The antibody solution should be gently mixed before use. |

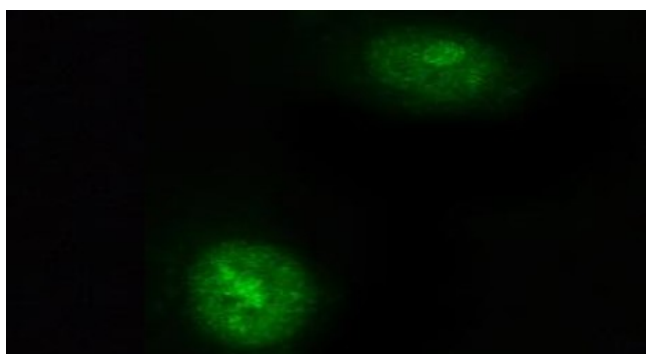
Note

For laboratory research only, not for drug, diagnostic or other use.

Bioinformation

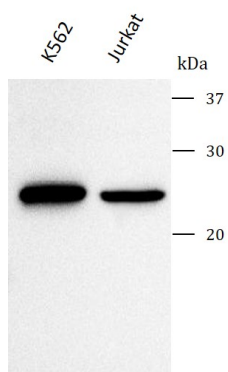
| | |
|-----------------------|---|
| Gene Symbol | POLR3GL |
| Gene Full Name | RNA Polymerase III Subunit GL |
| Background | Predicted to enable chromatin binding activity. Involved in transcription by RNA polymerase III. Located in nucleus. Part of RNA polymerase III complex. |
| Function | DNA-dependent RNA polymerase catalyzes the transcription of DNA into RNA using the four ribonucleoside triphosphates as substrates. Specific peripheric component of RNA polymerase III which synthesizes small RNAs, such as 5S rRNA and tRNAs |
| Calculated Mw | 25 kDa |
| Cellular Localization | Nucleus |

Images



ARG43947 anti-POLR3GL antibody ICC/IF image

Immunofluorescence: A549 cells stained with ARG43947 anti-POLR3GL antibody at 5 µg/ml dilution.



ARG43947 anti-POLR3GL antibody WB image

Western blot: K562 and Jurkat stained with ARG43947 anti-POLR3GL antibody at 0.5 µg/mL dilution.