

ARG43948 anti-POMP antibody

Package: 50 µg
Store at: -20°C

Summary

Product Description	Rabbit Polyclonal antibody recognizes POMP
Tested Reactivity	Hu
Tested Application	ELISA, FACS, WB
Host	Rabbit
Clonality	Polyclonal
Isotype	IgG
Target Name	POMP
Species	Human
Immunogen	Human POMP recombinant protein
Conjugation	Un-conjugated
Alternate Names	POMP; Proteasome Maturation Protein; UMP1; Proteasemblin; C13orf12; HSPC014; Voltage-Gated K Channel Beta Subunit 4.1; Protein UMP1 Homolog; HUMP1; Voltage-Gated Potassium Channel Beta Subunit 4.1; Chromosome 13 Open Reading Frame 12; 2510048O06Rik; PNAS-110; PRAAS2

Application Instructions

Application table	Application	Dilution
	ELISA	0.1-0.5 µg/ml
	FACS	1-3 µg /1x10 ⁶ cells
	WB	0.1-0.25 µg/ml
Application Note	* The dilutions indicate recommended starting dilutions and the optimal dilutions or concentrations should be determined by the scientist.	

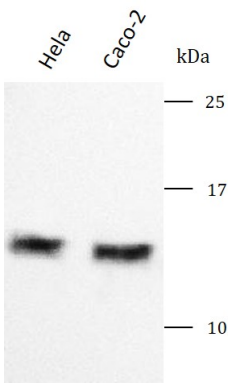
Properties

Form	Liquid
Purification	Affinity purified with Immunogen.
Buffer	0.9% NaCl, 0.2% Na ₂ HPO ₄ and 4% Trehalose.
Stabilizer	4% Trehalose
Concentration	0.5 mg/ml
Storage instruction	For continuous use, store undiluted antibody at 2-8°C for up to a week. For long-term storage, aliquot and store at -20°C or below. Storage in frost free freezers is not recommended. Avoid repeated freeze/thaw cycles. Suggest spin the vial prior to opening. The antibody solution should be gently mixed before use.
Note	For laboratory research only, not for drug, diagnostic or other use.

Bioinformation

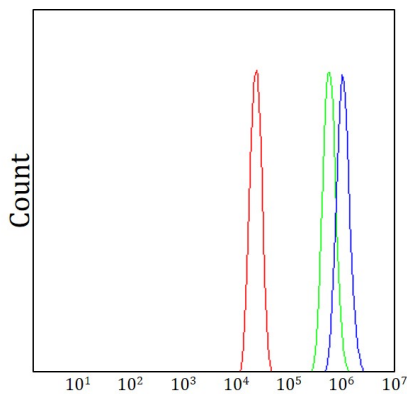
Gene Symbol	POMP
Gene Full Name	Proteasome Maturation Protein
Background	The protein encoded by this gene is a molecular chaperone that binds 20S preproteasome components and is essential for 20S proteasome formation. The 20S proteasome is the proteolytically active component of the 26S proteasome complex. The encoded protein is degraded before the maturation of the 20S proteasome is complete. A variant in the 5' UTR of this gene has been associated with KLICK syndrome, a rare skin disorder.
Function	Molecular chaperone essential for the assembly of standard proteasomes and immunoproteasomes. Degraded after completion of proteasome maturation. Mediates the association of 20S preproteasome with the endoplasmic reticulum.
Calculated Mw	16 kDa
PTM	Isopeptide bond, Ubl conjugation
Cellular Localization	Cytoplasm, Endoplasmic reticulum, Membrane, Microsome, Nucleus

Images



ARG43948 anti-POMP antibody WB image

Western blot: HeLa and Caco-2 stained with ARG43948 anti-POMP antibody at 0.5 µg/mL dilution.



ARG43948 anti-POMP antibody FACS image

Flow Cytometry: A431 cells stained with ARG43948 anti-POMP antibody (blue) at 1 µg/1x10⁶ cells dilution.