

## ARG43949 anti-PPM1N antibody

Package: 50 µg  
Store at: -20°C

### Summary

Product Description	Rabbit Polyclonal antibody recognizes PPM1N
Tested Reactivity	Hu
Tested Application	ELISA, FACS, ICC/IF, WB
Host	Rabbit
Clonality	Polyclonal
Isotype	IgG
Target Name	PPM1N
Species	Human
Immunogen	Human PPM1N recombinant protein
Conjugation	Un-conjugated
Alternate Names	PPM1N; Protein Phosphatase, Mg <sup>2+</sup> /Mn <sup>2+</sup> Dependent 1N (Putative); Probable Protein Phosphatase 1N; FLJ40125; Protein Phosphatase, Mg <sup>2+</sup> /Mn <sup>2+</sup> Dependent, 1N (Putative); EC 3.1.3.16

### Application Instructions

Application table	Application	Dilution
	ELISA	0.1-0.5 µg/ml
	FACS	1-3 µg /1x10 <sup>6</sup> cells
	ICC/IF	5 µg/ml
	WB	0.25-0.5 µg/ml
Application Note	* The dilutions indicate recommended starting dilutions and the optimal dilutions or concentrations should be determined by the scientist.	

### Properties

Form	Liquid
Purification	Affinity purified with Immunogen.
Buffer	0.9% NaCl, 0.2% Na <sub>2</sub> HPO <sub>4</sub> and 4% Trehalose.
Stabilizer	4% Trehalose
Concentration	0.5 mg/ml
Storage instruction	For continuous use, store undiluted antibody at 2-8°C for up to a week. For long-term storage, aliquot and store at -20°C or below. Storage in frost free freezers is not recommended. Avoid repeated freeze/thaw cycles. Suggest spin the vial prior to opening. The antibody solution should be gently mixed before use.

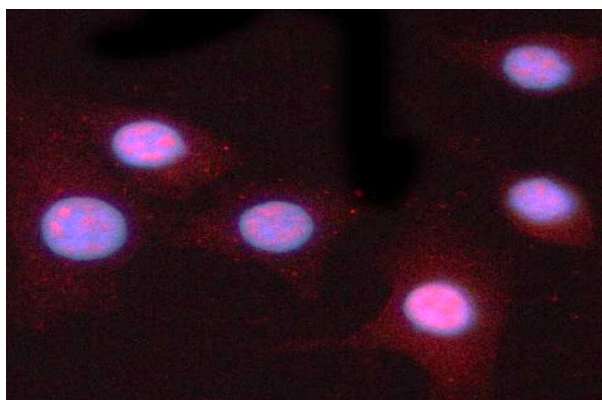
**Note**

For laboratory research only, not for drug, diagnostic or other use.

## Bioinformation

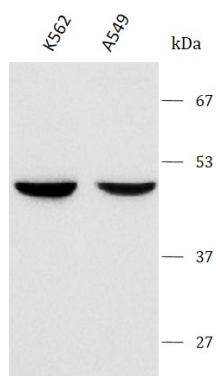
Gene Symbol	PPM1N
Gene Full Name	Protein Phosphatase, Mg2+/Mn2+ Dependent 1N (Putative)
Background	Predicted to enable metal ion binding activity and protein serine/threonine phosphatase activity. Predicted to be involved in negative regulation of I-kappaB kinase/NF-kappaB signaling and positive regulation of canonical Wnt signaling pathway. Predicted to be active in cytosol and nucleus.
Function	$\text{H}_2\text{O} + \text{O-phospho-L-seryl-[protein]} = \text{L-seryl-[protein]} + \text{phosphate}$
Calculated Mw	46 kDa
Cellular Localization	Cytosol, Nucleus

## Images



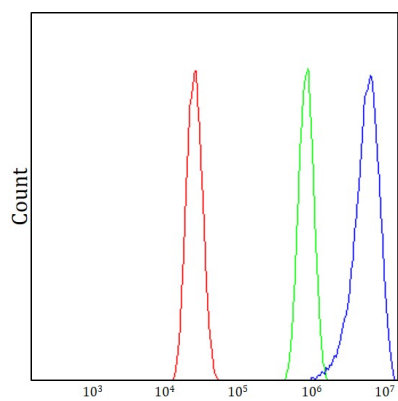
ARG43949 anti-PPM1N antibody ICC/IF image

Immunofluorescence: A549 cells stained with ARG43949 anti-PPM1N antibody at 5 µg/ml dilution.



ARG43949 anti-PPM1N antibody WB image

Western blot: HeLa, K562 and A549 stained with ARG43949 anti-PPM1N antibody at 0.5 µg/mL dilution.



#### ARG43949 anti-PPM1N antibody FACS image

Flow Cytometry: MCF-7 cells stained with ARG43949 anti-PPM1N antibody (blue) at  $1\text{ }\mu\text{g}/1\times 10^6$  cells dilution.