

ARG43951 anti-PPP1R36 antibody

Package: 50 µg
Store at: -20°C

Summary

Product Description	Rabbit Polyclonal antibody recognizes PPP1R36
Tested Reactivity	Hu
Tested Application	ELISA, FACS, ICC/IF, WB
Host	Rabbit
Clonality	Polyclonal
Isotype	IgG
Target Name	PPP1R36
Species	Human
Immunogen	Human PPP1R36 recombinant protein
Conjugation	Un-conjugated
Alternate Names	PPP1R36; Protein Phosphatase 1 Regulatory Subunit 36; C14orf50; Protein Phosphatase 1, Regulatory Subunit 36; Chromosome 14 Open Reading Frame 50

Application Instructions

Application table	Application	Dilution
	ELISA	0.1-0.5 µg/ml
	FACS	1-3 µg /1x10 ⁶ cells
	ICC/IF	5 µg/ml
	WB	0.25-0.5 µg/ml
Application Note	* The dilutions indicate recommended starting dilutions and the optimal dilutions or concentrations should be determined by the scientist.	

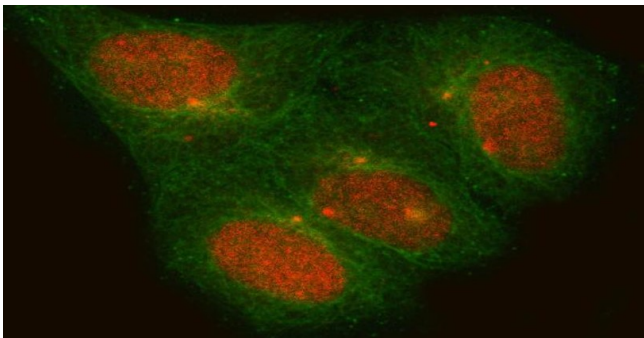
Properties

Form	Liquid
Purification	Affinity purified with Immunogen.
Buffer	0.9% NaCl, 0.2% Na ₂ HPO ₄ and 4% Trehalose.
Stabilizer	4% Trehalose
Concentration	0.5 mg/ml
Storage instruction	For continuous use, store undiluted antibody at 2-8°C for up to a week. For long-term storage, aliquot and store at -20°C or below. Storage in frost free freezers is not recommended. Avoid repeated freeze/thaw cycles. Suggest spin the vial prior to opening. The antibody solution should be gently mixed before use.

Bioinformation

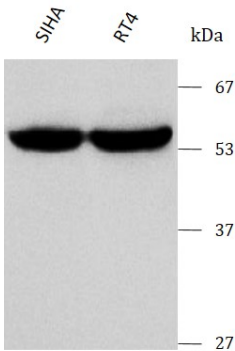
Gene Symbol	PPP1R36
Gene Full Name	Protein Phosphatase 1 Regulatory Subunit 36
Background	Predicted to enable phosphatase binding activity and protein phosphatase inhibitor activity. Predicted to be involved in negative regulation of phosphatase activity.
Function	Inhibits phosphatase activity of protein phosphatase 1 (PP1) complexes.
Calculated Mw	49 kDa

Images



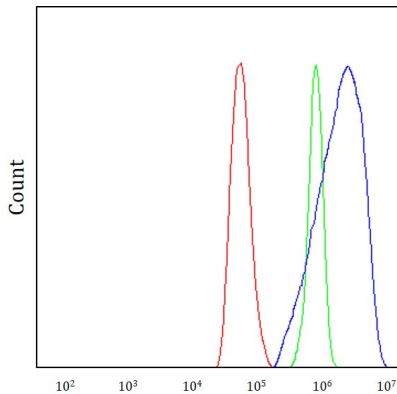
ARG43951 anti-PPP1R36 antibody ICC/IF image

Immunofluorescence: HeLa cells stained with ARG43951 anti-PPP1R36 antibody at 5 µg/ml dilution.



ARG43951 anti-PPP1R36 antibody WB image

Western blot: SIHA and RT4 stained with ARG43951 anti-PPP1R36 antibody at 0.5 µg/mL dilution.



ARG43951 anti-PPP1R36 antibody FACS image

Flow Cytometry: Hela cells stained with ARG43951 anti-PPP1R36 antibody (blue) at 1 µg/1x10⁶ cells dilution.