

## ARG43978 anti-PRPF8 antibody

Package: 50 µg  
Store at: -20°C

### Summary

|                     |  |
|---------------------|--|
| Product Description | Rabbit Polyclonal antibody recognizes PRPF8  |
| Tested Reactivity   | Hu, Ms   |
| Tested Application  | ELISA, WB  |
| Host                | Rabbit   |
| Clonality           | Polyclonal   |
| Isotype             | IgG  |
| Target Name         | PRPF8  |
| Species             | Human  |
| Immunogen           | Human PRPF8 recombinant protein  |
| Conjugation         | Un-conjugated  |
| Alternate Names     | PRPF8; Pre-mRNA Processing Factor 8; PRPC8; SNRNP220; Pre-mRNA-Processing-Splicing Factor 8; 220 KDa U5 SnRNP-Specific Protein; Splicing Factor Prp8; PRP8 Homolog; HPrp8; Prp8; RP13; P220; U5 SnRNP-Specific Protein (220 KD), Ortholog Of S. Cerevisiae Prp8p; PRP8 Pre-mRNA Processing Factor 8 Homolog; Precursor mRNA Processing Protein; Apoptosis-Regulated Protein; HPRP8; PRP8 |

### Application Instructions

| Application table | Application  | Dilution       |
|-------------------|--|----------------|
|                   | ELISA  | 0.1-0.5 µg/ml  |
|                   | WB   | 0.25-0.5 µg/ml |
| Application Note  | * The dilutions indicate recommended starting dilutions and the optimal dilutions or concentrations should be determined by the scientist. |                |

### Properties

|                     |  |
|---------------------|--|
| Form                | Liquid   |
| Purification        | Affinity purified with Immunogen.  |
| Buffer              | 0.9% NaCl, 0.2% Na2HPO4 and 4% Trehalose.  |
| Stabilizer          | 4% Trehalose   |
| Concentration       | 0.5 mg/ml  |
| Storage instruction | For continuous use, store undiluted antibody at 2-8°C for up to a week. For long-term storage, aliquot and store at -20°C or below. Storage in frost free freezers is not recommended. Avoid repeated freeze/thaw cycles. Suggest spin the vial prior to opening. The antibody solution should be gently mixed before use. |
| Note                | For laboratory research only, not for drug, diagnostic or other use.   |

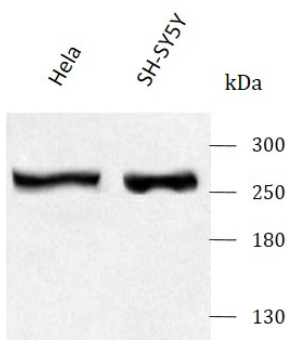
Bioinformation

|                       |  |
|-----------------------|--|
| Gene Symbol           | PRPF8  |
| Gene Full Name        | Pre-mRNA Processing Factor 8   |
| Background            | Pre-mRNA splicing occurs in 2 sequential transesterification steps. The protein encoded by this gene is a component of both U2- and U12-dependent spliceosomes, and found to be essential for the catalytic step II in pre-mRNA splicing process. It contains several WD repeats, which function in protein-protein interactions. This protein has a sequence similarity to yeast Prp8 protein. This gene is a candidate gene for autosomal dominant retinitis pigmentosa. |
| Function              | Plays role in pre-mRNA splicing as core component of precatalytic, catalytic and postcatalytic spliceosomal complexes, both of the predominant U2-type spliceosome and the minor U12-type spliceosome.   |
| Calculated Mw         | 274 kDa  |
| PTM                   | Acetylation, Methylation, Phosphoprotein   |
| Cellular Localization | Nucleus, Spliceosome   |

Images

ARG43978 anti-PRPF8 antibody WB image

Western blot: HeLa and SH-SY5Y stained with ARG43978 anti-PRPF8 antibody at 0.5 µg/mL dilution.



ARG43978 anti-PRPF8 antibody WB image

Western blot: NIH/3T3 stained with ARG43978 anti-PRPF8 antibody at 0.5 µg/mL dilution.

