

ARG43979 anti-PRRG1 antibody

Package: 50 µg
Store at: -20°C

Summary

| | |
|---------------------|--|
| Product Description | Rabbit Polyclonal antibody recognizes PRRG1 |
| Tested Reactivity | Hu |
| Tested Application | ELISA, FACS, WB |
| Host | Rabbit |
| Clonality | Polyclonal |
| Isotype | IgG |
| Target Name | PRRG1 |
| Species | Human |
| Immunogen | Human PRRG1 recombinant protein |
| Conjugation | Un-conjugated |
| Alternate Names | PRRG1; Proline Rich And Gla Domain 1; PRGP1; Proline-Rich Gla (G-Carboxyglutamic Acid) Polypeptide 1; Transmembrane Gamma-Carboxyglutamic Acid Protein 1; Proline-Rich Gamma-Carboxyglutamic Acid Protein 1; Proline Rich Gla (G-Carboxyglutamic Acid) 1; Proline-Rich Gla Protein 1; TMG1 |

Application Instructions

| Application table | Application | Dilution |
|-------------------|--|--------------------------|
| | ELISA | 0.1-0.5 µg/ml |
| | FACS | 1-3 µg/1x10 ⁶ |
| | WB | 0.25-0.5 µg/ml |
| Application Note | * The dilutions indicate recommended starting dilutions and the optimal dilutions or concentrations should be determined by the scientist. | |

Properties

| | |
|---------------------|--|
| Form | Liquid |
| Purification | Affinity purified with Immunogen. |
| Buffer | 0.9% NaCl, 0.2% Na ₂ HPO ₄ and 4% Trehalose. |
| Stabilizer | 4% Trehalose |
| Concentration | 0.5 mg/ml |
| Storage instruction | For continuous use, store undiluted antibody at 2-8°C for up to a week. For long-term storage, aliquot and store at -20°C or below. Storage in frost free freezers is not recommended. Avoid repeated freeze/thaw cycles. Suggest spin the vial prior to opening. The antibody solution should be gently mixed before use. |
| Note | For laboratory research only, not for drug, diagnostic or other use. |

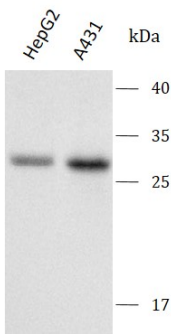
Bioinformation

| | |
|-----------------------|--|
| Gene Symbol | PRRG1 |
| Gene Full Name | Proline Rich And Gla Domain 1 |
| Background | This gene encodes a vitamin K-dependent, gamma-carboxyglutamic acid (Gla)-containing, single-pass transmembrane protein. This protein contains a Gla domain at the N-terminus, preceded by a propeptide sequence required for post-translational gamma-carboxylation of specific glutamic acid residues by a vitamin K-dependent gamma-carboxylase. The C-terminus is proline-rich containing PPXY and PXXP motifs found in a variety of signaling and cytoskeletal proteins. This gene is highly expressed in the spinal cord. Several alternatively spliced transcript variants have been found for this gene. |
| Calculated Mw | 25 kDa |
| PTM | Disulfide bond |
| Cellular Localization | Membrane |

Images

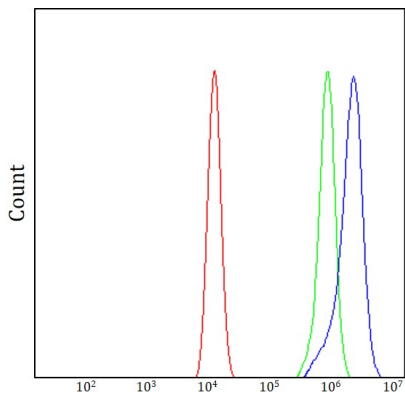
ARG43979 anti-PRRG1 antibody WB image

Western blot: HepG2 and A431 stained with ARG43979 anti-PRRG1 antibody at 0.5 µg/mL dilution.



ARG43979 anti-PRRG1 antibody FACS image

Flow Cytometry: HEL cells stained with ARG43979 anti-PRRG1 antibody (blue) at 1 µg/1x10^6 cells dilution.



ARG43979 anti-PRRG1 antibody WB image

Western blot: PC-3 stained with ARG43979 anti-PRRG1 antibody at 0.5 µg/mL dilution.

