

ARG43981 anti-Marapsin antibody

Package: 50 µg
Store at: -20°C

Summary

Product Description	Rabbit Polyclonal antibody recognizes Marapsin
Tested Reactivity	Hu, Ms, Rat
Tested Application	ELISA, FACS, WB
Host	Rabbit
Clonality	Polyclonal
Isotype	IgG
Target Name	Marapsin
Species	Human
Immunogen	Human Marapsin recombinant protein
Conjugation	Un-conjugated
Alternate Names	PRSS27; Serine Protease 27; MPN; Pancreasin; Marapsin; CAPH2; Protease, Serine 27; Channel-Activating Protease 2; EC 3.4.21.43; EC 3.4.21.-; EC 3.4.21.4; EC 3.4.21

Application Instructions

Application table	Application	Dilution
	ELISA	0.1-0.5 µg/ml
	FACS	1-3 µg/1x10 ⁶
	WB	0.25-0.5 µg/ml
Application Note	* The dilutions indicate recommended starting dilutions and the optimal dilutions or concentrations should be determined by the scientist.	

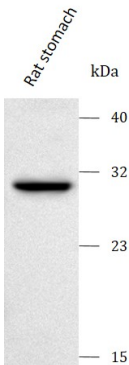
Properties

Form	Liquid
Purification	Affinity purified with Immunogen.
Buffer	0.9% NaCl, 0.2% Na ₂ HPO ₄ and 4% Trehalose.
Stabilizer	4% Trehalose
Concentration	0.5 mg/ml
Storage instruction	For continuous use, store undiluted antibody at 2-8°C for up to a week. For long-term storage, aliquot and store at -20°C or below. Storage in frost free freezers is not recommended. Avoid repeated freeze/thaw cycles. Suggest spin the vial prior to opening. The antibody solution should be gently mixed before use.
Note	For laboratory research only, not for drug, diagnostic or other use.

Bioinformation

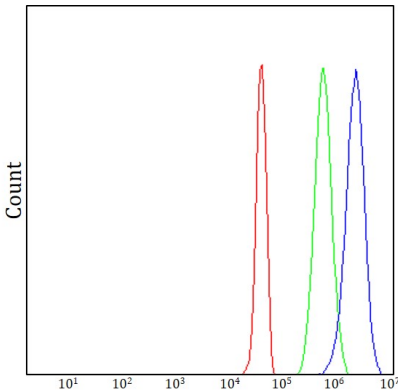
Gene Symbol	PRSS27
Gene Full Name	Serine Protease 27
Background	This gene is located within a large protease gene cluster on chromosome 16. It belongs to the group-1 subfamily of serine proteases. The encoded protein is a secreted tryptic serine protease and is expressed mainly in the pancreas. Alternative splicing results in multiple transcript variants.
Calculated Mw	32 kDa
PTM	Disulfide bond, Glycoprotein, Zymogen
Cellular Localization	Secreted

Images



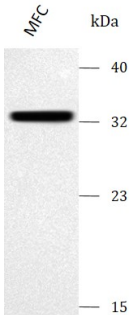
ARG43981 anti-Marapsin antibody WB image

Western blot: Rat stomach stained with ARG43981 anti-Marapsin antibody at 0.5 µg/mL dilution.



ARG43981 anti-Marapsin antibody FACS image

Flow Cytometry: JK cells stained with ARG43981 anti-Marapsin antibody (blue) at 1 µg/1x10^6 cells dilution.



ARG43981 anti-Marapsin antibody WB image

Western blot: MFC stained with ARG43981 anti-Marapsin antibody at 0.5 µg/mL dilution.