

ARG43982 anti-PRSS35 antibody

Package: 50 µg
Store at: -20°C

Summary

Product Description	Rabbit Polyclonal antibody recognizes PRSS35
Tested Reactivity	Hu, Rat
Tested Application	ELISA, WB
Host	Rabbit
Clonality	Polyclonal
Isotype	IgG
Target Name	PRSS35
Species	Human
Immunogen	Human PRSS35 recombinant protein
Conjugation	Un-conjugated
Alternate Names	PRSS35; Serine Protease 35; DJ223E3.1; C6orf158; Inactive Serine Protease 35; Protease, Serine 35; MGC46520; Chromosome 6 Open Reading Frame 158 EC 3.4.21.4; EC 3.4.21

Application Instructions

Application table	Application	Dilution
	ELISA	0.1-0.5 µg/ml
	WB	0.25-0.5 µg/ml
Application Note	* The dilutions indicate recommended starting dilutions and the optimal dilutions or concentrations should be determined by the scientist.	

Properties

Form	Liquid
Purification	Affinity purified with Immunogen.
Buffer	0.9% NaCl, 0.2% Na2HPO4 and 4% Trehalose.
Stabilizer	4% Trehalose
Concentration	0.5 mg/ml
Storage instruction	For continuous use, store undiluted antibody at 2-8°C for up to a week. For long-term storage, aliquot and store at -20°C or below. Storage in frost free freezers is not recommended. Avoid repeated freeze/thaw cycles. Suggest spin the vial prior to opening. The antibody solution should be gently mixed before use.
Note	For laboratory research only, not for drug, diagnostic or other use.

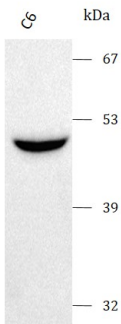
Bioinformation

Gene Symbol	PRSS35
Gene Full Name	Serine Protease 35
Background	Predicted to be located in extracellular region.
Calculated Mw	47 kDa
PTM	Disulfide bond, Glycoprotein
Cellular Localization	Secreted

Images

ARG43982 anti-PRSS35 antibody WB image

Western blot: C6 stained with ARG43982 anti-PRSS35 antibody at 0.5 µg/mL dilution.



ARG43982 anti-PRSS35 antibody WB image

Western blot: PC-3 stained with ARG43982 anti-PRSS35 antibody at 0.5 µg/mL dilution.

