

ARG43999 anti-PSMD6 antibody

Package: 50 µg
Store at: -20°C

Summary

Product Description	Rabbit Polyclonal antibody recognizes PSMD6
Tested Reactivity	Hu
Tested Application	ELISA, FACS, ICC/IF, WB
Host	Rabbit
Clonality	Polyclonal
Isotype	IgG
Target Name	PSMD6
Species	Human
Immunogen	Human PSMD6 recombinant protein
Conjugation	Un-conjugated
Alternate Names	PSMD6; Proteasome 26S Subunit, Non-ATPase 6; KIAA0107; P44S10; Rpn7; S10; Proteasome (Prosome, Macropain) 26S Subunit, Non-ATPase, 6; 26S Proteasome Non-ATPase Regulatory Subunit 6; Proteasome Regulatory Particle Subunit P44S10; Phosphonoformate Immuno-Associated Protein 4; Breast Cancer-Associated Protein SGA-113M; P42A; 26S Proteasome Regulatory Subunit RPN7; 26S Proteasome Regulatory Subunit S10; SGA-113M; PFAAP4

Application Instructions

Application table	Application	Dilution
	ELISA	0.1-0.5 µg/ml
	FACS	1-3 µg/1x10 ⁶
	ICC/IF	5 µg/ml
	WB	0.25-0.5 µg/ml
Application Note	* The dilutions indicate recommended starting dilutions and the optimal dilutions or concentrations should be determined by the scientist.	

Properties

Form	Liquid
Purification	Affinity purified with Immunogen.
Buffer	0.9% NaCl, 0.2% Na ₂ HPO ₄ and 4% Trehalose.
Stabilizer	4% Trehalose
Concentration	0.5 mg/ml
Storage instruction	For continuous use, store undiluted antibody at 2-8°C for up to a week. For long-term storage, aliquot and store at -20°C or below. Storage in frost free freezers is not recommended. Avoid repeated

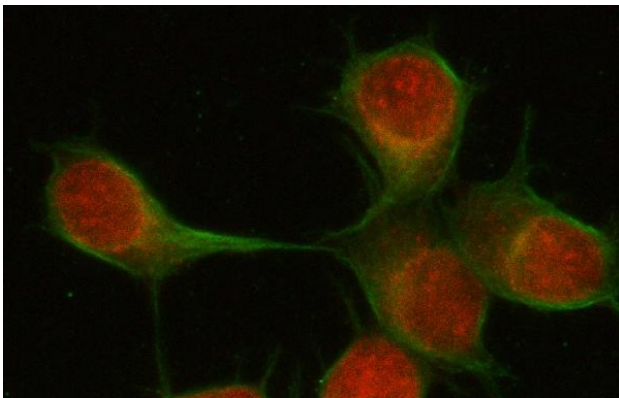
freeze/thaw cycles. Suggest spin the vial prior to opening. The antibody solution should be gently mixed before use.

Note For laboratory research only, not for drug, diagnostic or other use.

Bioinformation

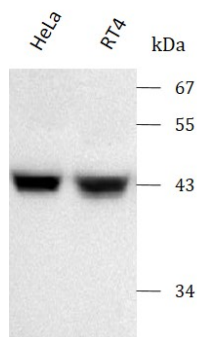
Gene Symbol	PSMD6
Gene Full Name	Proteasome 26S Subunit, Non-ATPase 6
Background	This gene encodes a member of the protease subunit S10 family. The encoded protein is a subunit of the 26S proteasome which colocalizes with DNA damage foci and is involved in the ATP-dependent degradation of ubiquitinated proteins. Alternative splicing results in multiple transcript variants.
Function	Component of the 26S proteasome, a multiprotein complex involved in the ATP-dependent degradation of ubiquitinated proteins. This complex plays a key role in the maintenance of protein homeostasis by removing misfolded or damaged proteins, which could impair cellular functions, and by removing proteins whose functions are no longer required. Therefore, the proteasome participates in numerous cellular processes, including cell cycle progression, apoptosis, or DNA damage repair.
Calculated Mw	46 kDa
Cellular Localization	Proteasome

Images



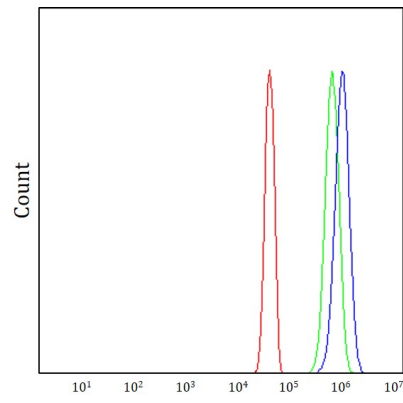
ARG43999 anti-PSMD6 antibody ICC/IF image

Immunofluorescence: U2OS cells stained with ARG43999 anti-PSMD6 antibody at 5 µg/ml dilution.



ARG43999 anti-PSMD6 antibody WB image

Western blot: HeLa and RT4 stained with ARG43999 anti-PSMD6 antibody at 0.5 µg/mL dilution.



ARG43999 anti-PSMD6 antibody FACS image

Flow Cytometry: JK cells stained with ARG43999 anti-PSMD6 antibody (blue) at $1\text{ }\mu\text{g}/1\times 10^6$ cells dilution.