

## ARG44004 anti-ASC / TMS1 antibody

Package: 50 µg  
Store at: -20°C

### Summary

Product Description	Rabbit Polyclonal antibody recognizes ASC / TMS1
Tested Reactivity	Hu
Tested Application	ELISA, FACS, ICC/IF, IHC-P, WB
Host	Rabbit
Clonality	Polyclonal
Isotype	IgG
Target Name	ASC / TMS1
Species	Human
Immunogen	Human ASC / TMS1 recombinant protein
Conjugation	Un-conjugated
Alternate Names	PYCARD; PYD And CARD Domain Containing; CARD5; ASC; Apoptosis-Associated Speck-Like Protein Containing A CARD; TMS-1; Caspase Recruitment Domain-Containing Protein 5; Target Of Methylation-Induced Silencing 1; TMS1; PYD And CARD Domain-Containing Protein; Apoptosis-Associated Speck-Like; HASC; TMS

### Application Instructions

Application table	Application	Dilution
	ELISA	0.1-0.5 µg/ml
	FACS	1-3 µg/1x10 <sup>6</sup>
	ICC/IF	5 µg/ml
	IHC-P	2-5 µg/ml
	WB	0.1-0.25 µg/ml

**Application Note** \* The dilutions indicate recommended starting dilutions and the optimal dilutions or concentrations should be determined by the scientist.

### Properties

Form	Liquid
Purification	Affinity purified with Immunogen.
Buffer	0.9% NaCl, 0.2% Na <sub>2</sub> HPO <sub>4</sub> and 4% Trehalose.
Stabilizer	4% Trehalose
Concentration	0.5 mg/ml
Storage instruction	For continuous use, store undiluted antibody at 2-8°C for up to a week. For long-term storage, aliquot and store at -20°C or below. Storage in frost free freezers is not recommended. Avoid repeated

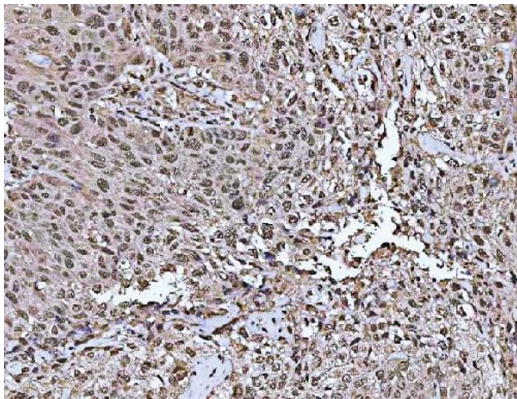
freeze/thaw cycles. Suggest spin the vial prior to opening. The antibody solution should be gently mixed before use.

**Note** For laboratory research only, not for drug, diagnostic or other use.

## Bioinformation

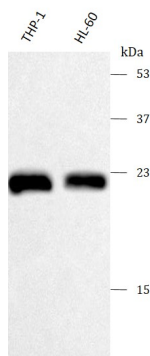
Gene Symbol	PYCARD
Gene Full Name	PYD And CARD Domain Containing
Background	This gene encodes an adaptor protein that is composed of two protein-protein interaction domains: a N-terminal PYRIN-PAAD-DAPIN domain (PYD) and a C-terminal caspase-recruitment domain (CARD). The PYD and CARD domains are members of the six-helix bundle death domain-fold superfamily that mediates assembly of large signaling complexes in the inflammatory and apoptotic signaling pathways via the activation of caspase. In normal cells, this protein is localized to the cytoplasm; however, in cells undergoing apoptosis, it forms ball-like aggregates near the nuclear periphery. Two transcript variants encoding different isoforms have been found for this gene.
Function	Functions as key mediator in apoptosis and inflammation.
Calculated Mw	22 kDa
PTM	Isopeptide bond, Phosphoprotein, Ubl conjugation
Cellular Localization	Cytoplasm, Endoplasmic reticulum, Golgi apparatus, Inflammasome, Membrane, Mitochondrion, Nucleus

## Images



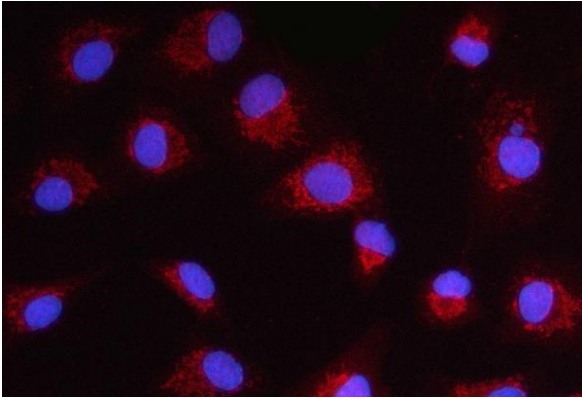
ARG44004 anti-ASC / TMS1 antibody IHC-P image

Immunohistochemistry: Human urothelial carcinoma stained with ARG44004 anti-ASC / TMS1 antibody at 2 µg/ml dilution.



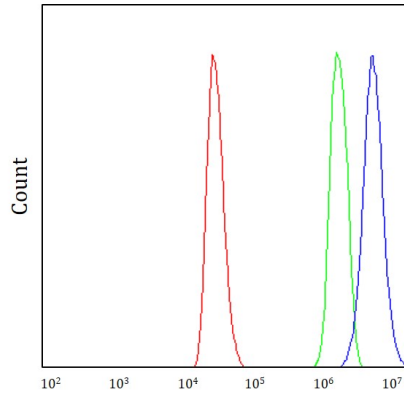
ARG44004 anti-ASC / TMS1 antibody WB image

Western blot: THP-1 and HL-6 stained with ARG44004 anti-ASC / TMS1 antibody at 0.5 µg/mL dilution.



ARG44004 anti-ASC / TMS1 antibody ICC/IF image

Immunofluorescence: A549 cells stained with ARG44004 anti-ASC / TMS1 antibody at 5  $\mu\text{g/ml}$  dilution.



ARG44004 anti-ASC / TMS1 antibody FACS image

Flow Cytometry: THP-1 cells stained with ARG44004 anti-ASC / TMS1 antibody (blue) at 1  $\mu\text{g}/1 \times 10^6$  cells dilution.