

ARG44005 anti-PYCR1 antibody

Package: 50 µg
Store at: -20°C

Summary

Product Description	Rabbit Polyclonal antibody recognizes PYCR1
Tested Reactivity	Hu
Tested Application	ELISA, FACS, ICC/IF, IHC-P, WB
Host	Rabbit
Clonality	Polyclonal
Isotype	IgG
Target Name	PYCR1
Species	Human
Immunogen	Human PYCR1 recombinant protein
Conjugation	Un-conjugated
Alternate Names	PYCR1; Pyrroline-5-Carboxylate Reductase 1; P5C; Pyrroline-5-Carboxylate Reductase 1, Mitochondrial; P5C Reductase 1; EC 1.5.1.2; Proliferation-Inducing Protein 45; ARCL2B; ARCL3B; P5CR 1; PIG45; PP222; P5CR; PRO3; PYCR

Application Instructions

Application table	Application	Dilution
	ELISA	0.1-0.5 µg/ml
	FACS	1-3 µg/1x10 ⁶
	ICC/IF	5 µg/ml
	IHC-P	2-5 µg/ml
	WB	0.25-0.5 µg/ml
Application Note	* The dilutions indicate recommended starting dilutions and the optimal dilutions or concentrations should be determined by the scientist.	

Properties

Form	Liquid
Purification	Affinity purified with Immunogen.
Buffer	0.9% NaCl, 0.2% Na ₂ HPO ₄ and 4% Trehalose.
Stabilizer	4% Trehalose
Concentration	0.5 mg/ml
Storage instruction	For continuous use, store undiluted antibody at 2-8°C for up to a week. For long-term storage, aliquot and store at -20°C or below. Storage in frost free freezers is not recommended. Avoid repeated freeze/thaw cycles. Suggest spin the vial prior to opening. The antibody solution should be gently mixed

before use.

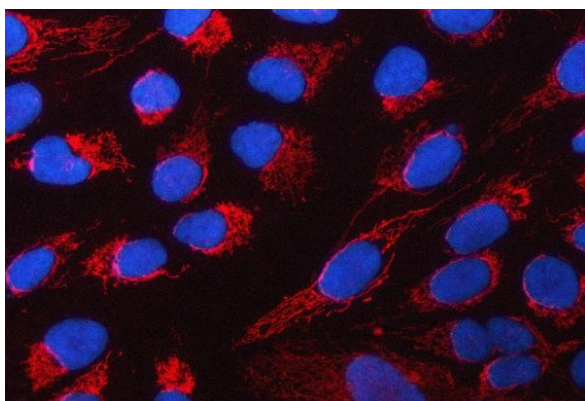
Note

For laboratory research only, not for drug, diagnostic or other use.

Bioinformation

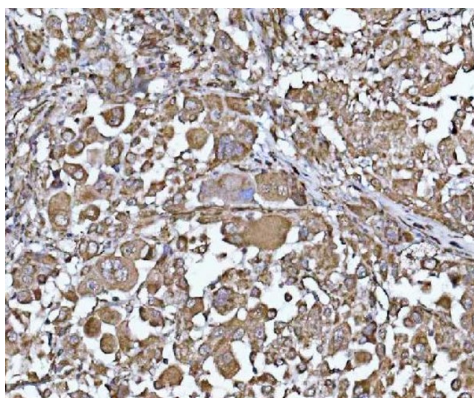
Gene Symbol	PYCR1
Gene Full Name	Pyrroline-5-Carboxylate Reductase 1
Background	This gene encodes an enzyme that catalyzes the NAD(P)H-dependent conversion of pyrroline-5-carboxylate to proline. This enzyme may also play a physiologic role in the generation of NADP(+) in some cell types. The protein forms a homopolymer and localizes to the mitochondrion. Alternative splicing results in multiple transcript variants.
Function	Housekeeping enzyme that catalyzes the last step in proline biosynthesis. Can utilize both NAD and NADP, but has higher affinity for NAD. Involved in the cellular response to oxidative stress.
Calculated Mw	33 kDa
PTM	Acetylation, Phosphoprotein
Cellular Localization	Mitochondrion

Images



ARG44005 anti-PYCR1 antibody ICC/IF image

Immunofluorescence: U2OS cells stained with ARG44005 anti-PYCR1 antibody at 5 µg/ml dilution.

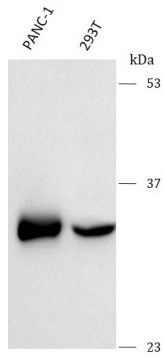


ARG44005 anti-PYCR1 antibody IHC-P image

Immunohistochemistry: Human lung cancer carcinoma stained with ARG44005 anti-PYCR1 antibody at 2 µg/ml dilution.

ARG44005 anti-PYCR1 antibody WB image

Western blot: PANC-1 and 293T stained with ARG44005 anti-PYCR1 antibody at 0.5 $\mu\text{g}/\text{mL}$ dilution.



ARG44005 anti-PYCR1 antibody FACS image

Flow Cytometry: 293T cells stained with ARG44005 anti-PYCR1 antibody (blue) at 1 $\mu\text{g}/1 \times 10^6$ cells dilution.

