

## ARG44012 anti-PHTF1 antibody

Package: 50 µg  
Store at: -20°C

### Summary

Product Description	Rabbit Polyclonal antibody recognizes PHTF1
Tested Reactivity	Hu
Tested Application	ELISA, FACS, WB
Host	Rabbit
Clonality	Polyclonal
Isotype	IgG
Target Name	PHTF1
Species	Human
Immunogen	Human PHTF1 recombinant protein
Conjugation	Un-conjugated
Alternate Names	PHTF1; Putative Homeodomain Transcription Factor 1; PHTF; Protein PHTF1

### Application Instructions

Application table	Application	Dilution
	ELISA	0.1-0.5 µg/ml
	FACS	1-3 µg /1x10 <sup>6</sup>
	WB	0.25-0.5 µg/ml
Application Note	* The dilutions indicate recommended starting dilutions and the optimal dilutions or concentrations should be determined by the scientist.	

### Properties

Form	Liquid
Purification	Affinity purified with Immunogen.
Buffer	0.9% NaCl, 0.2% Na <sub>2</sub> HPO <sub>4</sub> and 4% Trehalose.
Stabilizer	4% Trehalose
Concentration	0.5 mg/ml
Storage instruction	For continuous use, store undiluted antibody at 2-8°C for up to a week. For long-term storage, aliquot and store at -20°C or below. Storage in frost free freezers is not recommended. Avoid repeated freeze/thaw cycles. Suggest spin the vial prior to opening. The antibody solution should be gently mixed before use.
Note	For laboratory research only, not for drug, diagnostic or other use.

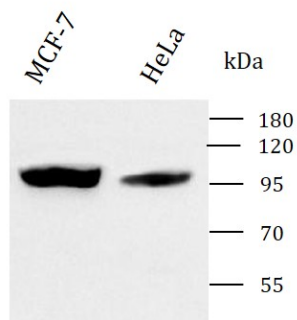
Bioinformation

Gene Symbol	PHTF1
Gene Full Name	Putative Homeodomain Transcription Factor 1
Background	Predicted to be located in cis-Golgi network and endoplasmic reticulum membrane. Predicted to be integral component of membrane.
Calculated Mw	87 kDa
PTM	Glycoprotein, Phosphoprotein
Cellular Localization	Endoplasmic reticulum, Golgi apparatus, Membrane

Images

ARG44012 anti-PHTF1 antibody WB image

Western blot: MCF-7 and HeLa stained with ARG44012 anti-PHTF1 antibody at 0.5 µg/mL dilution.



ARG44012 anti-PHTF1 antibody WB image

Flow Cytometry: U87 cells stained with ARG44012 anti-PHTF1 antibody (blue) at 1 µg/1x10^6 cells dilution.

