

ARG44019 anti-Sodium / Hydrogen Exchanger 1 antibody

Package: 50 µg
Store at: -20°C

Summary

Product Description	Rabbit Polyclonal antibody recognizes Sodium / Hydrogen Exchanger 1
Tested Reactivity	Hu
Predict Reactivity	Ms, Rat
Tested Application	ICC/IF, IHC-P, WB
Host	Rabbit
Clonality	Polyclonal
Isotype	IgG
Target Name	Sodium / Hydrogen Exchanger 1
Species	Human
Immunogen	Human Sodium / Hydrogen Exchanger 1 recombinantprotein
Conjugation	Un-conjugated
Alternate Names	SLC9A1; Solute Carrier Family 9 Member A1; Sodium/Hydrogen Exchanger 1; PPP1R143; NHE-1; APNH; NHE1; Solute Carrier Family 9, Subfamily A (NHE1, Cation Proton Antiporter 1), Member 1 ; Protein Phosphatase 1, Regulatory Subunit 143; Na(+)/H(+) Exchanger 1; Solute Carrier Family 9 (Sodium/Hydrogen Exchanger), Isoform 1 (Antiporter, Na+/H+, Amiloride Sensitive); Solute Carrier Family 9 (Sodium/Hydrogen Exchanger), Member 1 (Antiporter, Na+/H+, Amiloride Sensitive); Solute Carrier Family 9 (Sodium/Hydrogen Exchanger), Member 1; Na(+)/H(+) Antiporter, Amiloride-Sensitive; Solute Carrier Family 9 Member 1; Na-Li Countertransporter; LIKNS; APNH1

Application Instructions

Application table	Application	Dilution
	ICC/IF	20 µg/mL
	IHC-P	2.5 µg/mL
	WB	1-2 µg/mL
Application Note	* The dilutions indicate recommended starting dilutions and the optimal dilutions or concentrations should be determined by the scientist.	

Properties

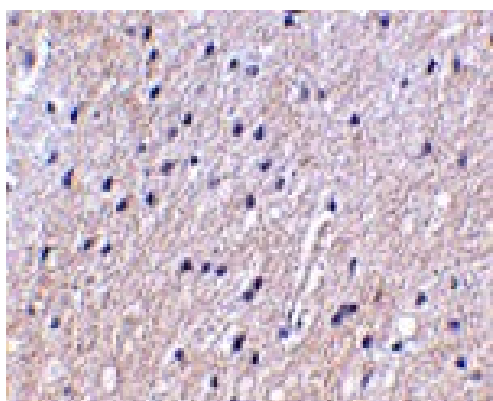
Form	Liquid
Purification	Affinity purified.
Buffer	PBS containing 0.02% sodium azide
Preservative	0.02% sodium azide
Concentration	1 mg/ml

Storage instruction	For continuous use, store undiluted antibody at 2-8°C for up to a week. For long-term storage, aliquot and store at -20°C or below. Storage in frost free freezers is not recommended. Avoid repeated freeze/thaw cycles. Suggest spin the vial prior to opening. The antibody solution should be gently mixed before use.
Note	For laboratory research only, not for drug, diagnostic or other use.

Bioinformation

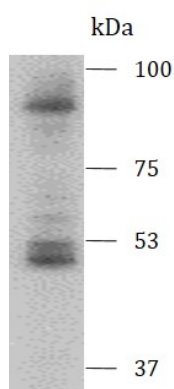
Gene Symbol	SLC9A1
Gene Full Name	Solute Carrier Family 9 Member A1
Background	This gene encodes a Na ⁺ /H ⁺ antiporter that is a member of the solute carrier family 9. The encoded protein is a plasma membrane transporter that is expressed in the kidney and intestine. This protein plays a central role in regulating pH homeostasis, cell migration and cell volume. This protein may also be involved in tumor growth.
Function	Involved in pH regulation to eliminate acids generated by active metabolism or to counter adverse environmental conditions. Major proton extruding system driven by the inward sodium ion chemical gradient. Plays an important role in signal transduction.
Calculated Mw	91 kDa
PTM	Glycoprotein, Phosphoprotein, Ubl conjugation
Cellular Localization	Cell membrane, Endoplasmic reticulum, Membrane

Images



ARG44019 anti-Sodium / Hydrogen Exchanger 1 antibody IHC-P image

Immunohistochemistry: Human brain stained with ARG44019 anti-Sodium / Hydrogen Exchanger 1 antibody at 2.5 µg/ml dilution.



ARG44019 anti-Sodium / Hydrogen Exchanger 1 antibody WB image

Western blot: MOLT4 stained with ARG44019 anti-Sodium / Hydrogen Exchanger 1 antibody at 2 µg/ml dilution.