

ARG44040 anti-TAX1BP1 antibody

Package: 100 µl
Store at: -20°C

Summary

Product Description	Rabbit Polyclonal antibody recognizes TAX1BP1
Tested Reactivity	Hu
Tested Application	IHC-P, WB
Host	Rabbit
Clonality	Polyclonal
Isotype	IgG
Target Name	TAX1BP1
Species	Human
Immunogen	Recombinant fusion protein of Human TRAF6BP.
Conjugation	Un-conjugated
Alternate Names	TAX1BP1; Tax1 Binding Protein 1; CALCOCO3; TXBP151; Tax1 (Human T-Cell Leukemia Virus Type I) Binding Protein 1; Tax1-Binding Protein 1; TRAF6-Binding Protein; T6BP

Application Instructions

Application table	Application	Dilution
	IHC-P	1:50-1:100
	WB	1:500-1:1000
Application Note	* The dilutions indicate recommended starting dilutions and the optimal dilutions or concentrations should be determined by the scientist.	

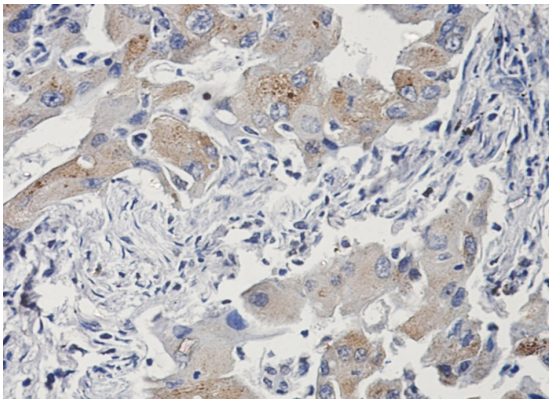
Properties

Form	Liquid
Purification	Affinity purified.
Buffer	50 mM Tris-Glycine (pH 7.4), 150 mM NaCl, 0.01% Sodium azide, 40% Glycerol and 0.05% BSA.
Preservative	0.01% Sodium azide
Stabilizer	40% Glycerol and 0.05% BSA
Concentration	Batch dependent
Storage instruction	For continuous use, store undiluted antibody at 2-8°C for up to a week. For long-term storage, aliquot and store at -20°C. Storage in frost free freezers is not recommended. Avoid repeated freeze/thaw cycles. Suggest spin the vial prior to opening. The antibody solution should be gently mixed before use.
Note	For laboratory research only, not for drug, diagnostic or other use.

Bioinformation

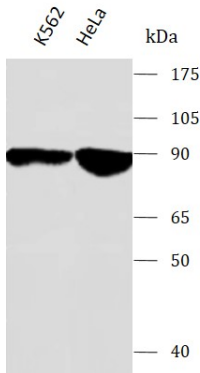
Gene Symbol	TAX1BP1
Gene Full Name	Tax1 Binding Protein 1
Background	This gene encodes a HTLV-1 tax1 binding protein. The encoded protein interacts with TNFAIP3, and inhibits TNF-induced apoptosis by mediating the TNFAIP3 anti-apoptotic activity. Degradation of this protein by caspase-3-like family proteins is associated with apoptosis induced by TNF. This protein may also have a role in the inhibition of inflammatory signaling pathways. Alternatively spliced transcript variants encoding different isoforms have been found for this gene.
Function	Upon NBR1 recruitment to the SQSTM1-ubiquitin condensates, acts as the major recruiter of RB1CC1 to these ubiquitin condensates to promote their autophagic degradation.
Calculated Mw	91 kDa
PTM	Phosphoprotein
Cellular Localization	Cytoplasm, Cytoplasmic vesicle, Mitochondrion

Images



ARG44040 anti-TAX1BP1 antibody IHC-P image

Immunohistochemistry: Human lung cancer stained with ARG44040 anti-TAX1BP1 antibody.



ARG44040 anti-TAX1BP1 antibody WB image

Western blot: K562 and HeLa stained with ARG44040 anti-TAX1BP1 antibody.