

ARG44047 anti-BCL2L13 antibody

Package: 50 µg
Store at: -20°C

Summary

Product Description	Rabbit Polyclonal antibody recognizes BCL2L13
Tested Reactivity	Hu
Predict Reactivity	Ms, Rat
Tested Application	ICC/IF, IHC-P, WB
Host	Rabbit
Clonality	Polyclonal
Isotype	IgG
Target Name	BCL2L13
Species	Human
Immunogen	Recombinant fusion protein containing a sequence corresponding to amino acids 280 - 330 of Human Bcl-rambo.
Conjugation	Un-conjugated
Alternate Names	BCL2L13; BCL2 Like 13; MIL1; BCL-RAMBO; BCL2-Like 13 (Apoptosis Facilitator); Bcl-2-Like Protein 13; Bcl2-L-13; Protein Mil1; Bcl-Rambo

Application Instructions

Application table	Application	Dilution
	ICC/IF	1-5 µg/mL
	IHC-P	10 µg/mL
	WB	20 µg/mL
Application Note	* The dilutions indicate recommended starting dilutions and the optimal dilutions or concentrations should be determined by the scientist.	

Properties

Form	Liquid
Purification	Affinity purified.
Buffer	PBS and 0.02% Sodium azide.
Preservative	0.02% Sodium azide
Concentration	1 mg/ml
Storage instruction	For continuous use, store undiluted antibody at 2-8°C for up to a week. For long-term storage, aliquot and store at -20°C. Storage in frost free freezers is not recommended. Avoid repeated freeze/thaw cycles. Suggest spin the vial prior to opening. The antibody solution should be gently mixed before use.

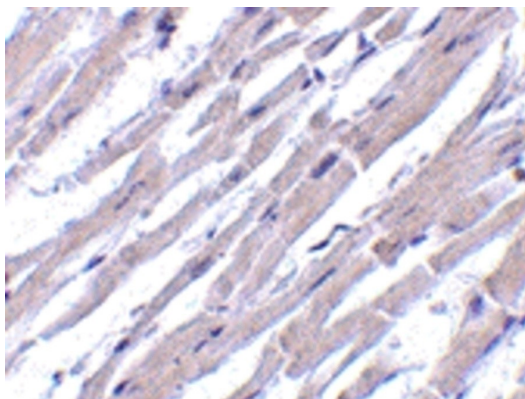
Note

For laboratory research only, not for drug, diagnostic or other use.

Bioinformation

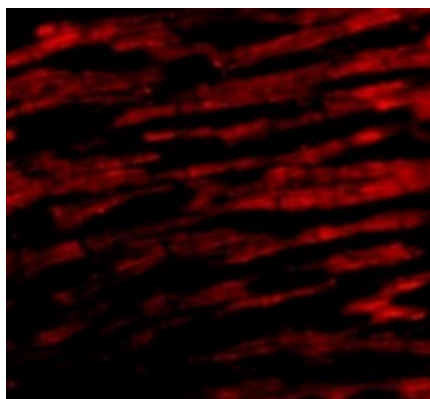
Gene Symbol	BCL2L13
Gene Full Name	BCL2 Like 13
Background	This gene encodes a mitochondrially-localized protein with conserved B-cell lymphoma 2 homology motifs. Overexpression of the encoded protein results in apoptosis. Alternatively spliced transcript variants have been observed for this gene.
Function	May promote the activation of caspase-3 and apoptosis.
Calculated Mw	53 kDa
PTM	Phosphoprotein
Cellular Localization	Membrane, Mitochondrion, Nucleus

Images



ARG44047 anti-BCL2L13 antibody IHC-P image

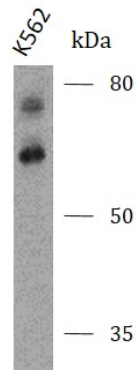
Immunohistochemistry: Human heart tissue stained with ARG44047 anti-BCL2L13 antibody at 10 µg/mL dilution.



ARG44047 anti-BCL2L13 antibody ICC/IF image

Immunofluorescence: Human Heart cells stained with ARG44047 anti-BCL2L13 antibody at 20 µg/mL dilution.

ARG44047 anti-BCL2L13 antibody WB image



Western blot: K562 stained with ARG44047 anti-BCL2L13 antibody at 4 μ g/mL dilution.