

ARG44051 anti-NLRX1 / NOD9 antibody

Package: 50 µg
Store at: -20°C

Summary

Product Description	Rabbit Polyclonal antibody recognizes NLRX1 / NOD9
Tested Reactivity	Hu, Ms, Rat
Tested Application	ELISA, FACS, ICC/IF, IHC-P, WB
Host	Rabbit
Clonality	Polyclonal
Isotype	IgG
Target Name	NLRX1 / NOD9
Species	Human
Immunogen	Recombinant fusion protein containing a sequence corresponding to amino acids 98-874 of Human NLRX1 / NOD9.
Conjugation	Un-conjugated
Alternate Names	CLR11.3; Nucleotide-binding oligomerization domain protein 5; Nucleotide-binding oligomerization domain protein 9; NOD26; Caterpillar protein 11.3; DLNB26; NOD5; Nucleotide-binding oligomerization domain protein 26; NOD9; NLR family member X1

Application Instructions

Application table	Application	Dilution
	ELISA	0.1-0.5 µg/ml
	FACS	1-3 µg/1x10 ⁶ cells
	ICC/IF	5 µg/ml
	IHC-P	2-5 µg/ml
	WB	0.25-0.5 µg/ml
	Application Note	* The dilutions indicate recommended starting dilutions and the optimal dilutions or concentrations should be determined by the scientist.

Properties

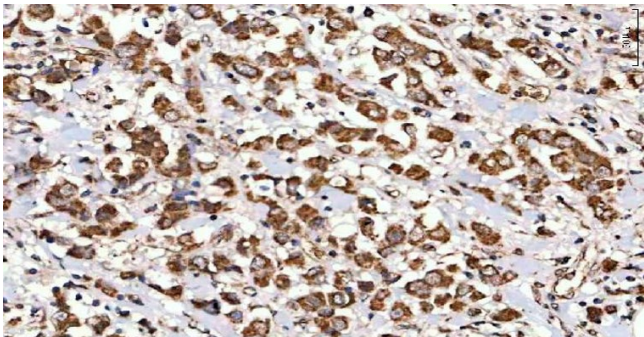
Form	Liquid
Purification	Affinity purified.
Buffer	0.9% NaCl, 0.2% Na ₂ HPO ₄ , 0.05% Sodium azide and 4% Trehalose.
Preservative	0.05% Sodium azide
Stabilizer	4% Trehalose
Concentration	0.5 mg/ml

Storage instruction	For continuous use, store undiluted antibody at 2-8°C for up to a week. For long-term storage, aliquot and store at -20°C. Storage in frost free freezers is not recommended. Avoid repeated freeze/thaw cycles. Suggest spin the vial prior to opening. The antibody solution should be gently mixed before use.
Note	For laboratory research only, not for drug, diagnostic or other use.

Bioinformation

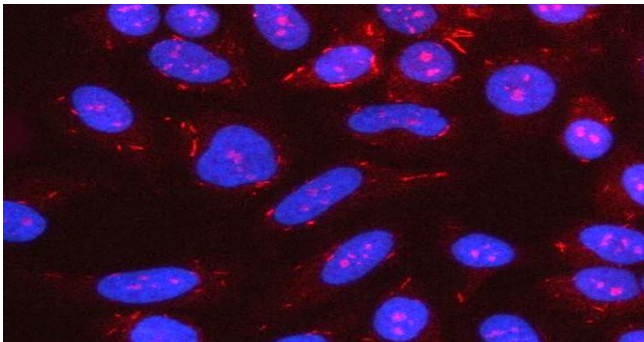
Background	This gene encodes a member of the NLR family. Alternative splicing has been observed at this gene locus and two transcript variants, encoding distinct isoforms, have been identified. [provided by RefSeq, Jul 2008]
Research Area	Immune System antibody
Calculated Mw	108 kDa

Images



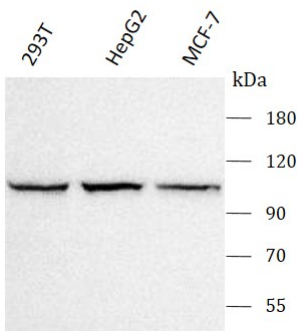
ARG44051 anti-NLRX1 / NOD9 antibody IHC-P image

Immunohistochemistry: Human breast cancer stained with ARG44051 anti-NLRX1 / NOD9 antibody at 2 μg/ml dilution.



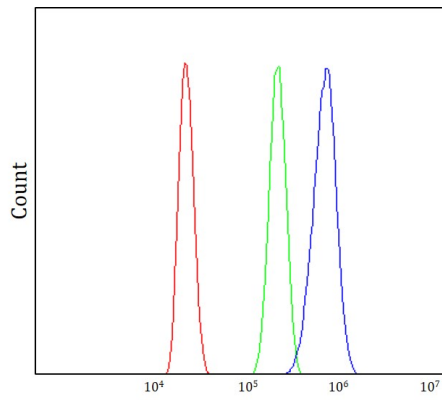
ARG44051 anti-NLRX1 / NOD9 antibody ICC/IF image

Immunofluorescence: HeLa stained with ARG44051 anti-NLRX1 / NOD9 antibody at 5 μg/ml dilution.



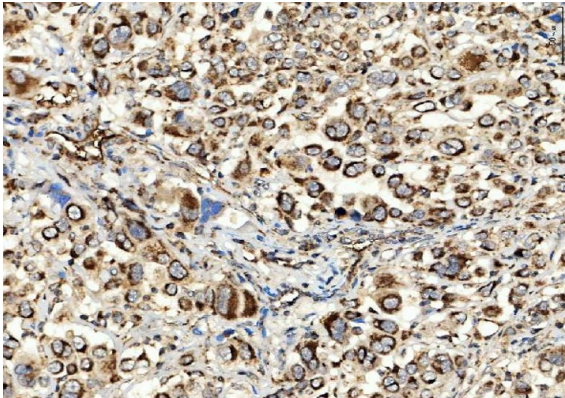
ARG44051 anti-NLRX1 / NOD9 antibody WB image

Western blot: 293T, HepG2 and MCF-7 stained with ARG44051 anti-NLRX1 / NOD9 antibody at 0.5 μg/mL dilution.



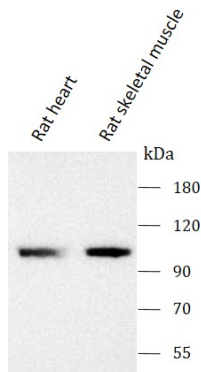
ARG44051 anti-NLRX1 / NOD9 antibody FACS image

Flow Cytometry: HL-60 stained with ARG44051 anti-NLRX1 / NOD9 antibody at $1\text{ }\mu\text{g}/1\times 10^6$ cells dilution.



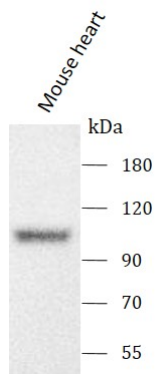
ARG44051 anti-NLRX1 / NOD9 antibody IHC-P image

Immunohistochemistry: Human lung adenocarcinoma stained with ARG44051 anti-NLRX1 / NOD9 antibody at $2\text{ }\mu\text{g}/\text{ml}$ dilution.



ARG44051 anti-NLRX1 / NOD9 antibody WB image

Western blot: Rat heart and Rat skeletal muscle stained with ARG44051 anti-NLRX1 / NOD9 antibody at $0.5\text{ }\mu\text{g}/\text{mL}$ dilution.



ARG44051 anti-NLRX1 / NOD9 antibody WB image

Western blot: Mouse skeletal muscle stained with ARG44051 anti-NLRX1 / NOD9 antibody at $0.5\text{ }\mu\text{g}/\text{mL}$ dilution.