

ARG44066 anti-RUFY3 antibody

Package: 50 µg
Store at: -20°C

Summary

Product Description	Rabbit Polyclonal recognizes RUFY3
Tested Reactivity	Hu, Ms, Rat
Tested Application	FACS, WB
Host	Rabbit
Clonality	Polyclonal
Isotype	IgG
Target Name	RUFY3
Species	Human
Immunogen	Human RUFY3 recombinant protein (Position: M1-H469).
Conjugation	Un-conjugated
Alternate Names	RUFY3; RUN And FYVE Domain Containing 3; KIAA0871; ZFYVE30; RIPx; Single Axon-Regulated Protein; Single Axon-Related 1; Protein RUFY3; Singar1; RUN And FYVE Domain-Containing Protein 3; Rap2 Interacting Protein X; Rap2-Interacting Protein X; SINGAR1; Singar; RIPX

Application Instructions

Application table	Application	Dilution
	FACS	1 - 3 µg/1x10 ⁶ cells
	WB	0.25 - 0.5 µg/ml
Application Note	The dilutions indicate recommended starting dilutions and the optimal dilutions or concentrations should be determined by the scientist.	

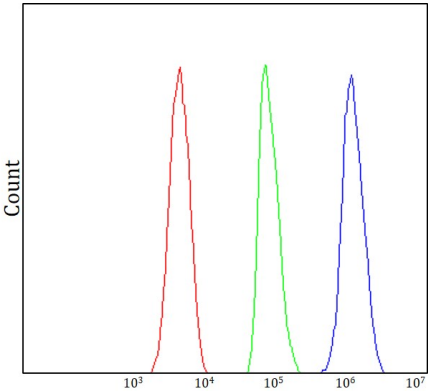
Properties

Form	Liquid
Purification	Affinity purification with immunogen.
Buffer	0.9% NaCl, 0.2% Na ₂ HPO ₄ , 0.05% Sodium azide and 4% Trehalose.
Preservative	0.05% Sodium azide
Stabilizer	4% Trehalose
Concentration	0.5 mg/ml
Storage instruction	For continuous use, store undiluted antibody at 2-8°C for up to a week. For long-term storage, aliquot and store at -20°C or below. Storage in frost free freezers is not recommended. Avoid repeated freeze/thaw cycles. Suggest spin the vial prior to opening. The antibody solution should be gently mixed before use.
Note	For laboratory research only, not for drug, diagnostic or other use.

Bioinformation

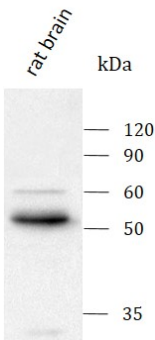
Gene Symbol	RUFY3
Gene Full Name	RUN And FYVE Domain Containing 3
Background	This gene encodes a RPIP8, UNC-14, and NESCA domain-containing protein that is required for maintenance of neuronal polarity. In addition, it has been implicated in mediation of gastric cancer cell migration and invasion via interaction with P21-activated kinase-1, which promotes its expression. The encoded protein localizes to F-actin-enriched invadopodia to induce formation of protrusions, thereby facilitating cell migration. Alternative splicing results in multiple transcript variants.
Function	Plays a role in the formation of F-actin-enriched protrusive structures at the cell periphery.
Calculated Mw	53 kDa
PTM	Phosphoprotein
Cellular Localization	Cell junction, Cell projection, Cytoplasm, Membrane

Images



ARG44066 anti-RUFY3 antibody FACS image

Flow Cytometry: SH-SY5Y stained with ARG44066 anti-RUFY3 antibody at 1 µg/1x10⁶ cells dilution.



ARG44066 anti-RUFY3 antibody WB image

Western blot: Rat brain stained with ARG44066 anti-RUFY3 antibody at 0.5 µg/mL dilution.

ARG44066 anti-RUFY3 antibody WB image

Western blot: Mouse brain stained with ARG44066 anti-RUFY3 antibody at 0.5 $\mu\text{g}/\text{mL}$ dilution.

