

## ARG44068 anti-PHF1 antibody

Package: 50 µg  
Store at: -20°C

### Summary

|                     |   |
|---------------------|---|
| Product Description | Rabbit Polyclonal recognizes PHF1   |
| Tested Reactivity   | Hu, Ms, Rat   |
| Tested Application  | WB  |
| Host                | Rabbit  |
| Clonality           | Polyclonal  |
| Isotype             | IgG   |
| Target Name         | PHF1  |
| Species             | Human   |
| Immunogen           | Human PHF1 recombinant protein (Position: L31-H491).  |
| Conjugation         | Un-conjugated   |
| Alternate Names     | PHF1; PHD Finger Protein 1; PCL1; TDRD19C; MTF2L2; Tudor Domain Containing 19C; Polycomb-Like Protein 1; Polycomb-Like 1; HPHF1; HPC1; Testicular Tissue Protein Li 140; Protein PHF1; PHF2 |

### Application Instructions

|                   |  |                  |
|-------------------|--|------------------|
| Application table | Application  | Dilution         |
|                   | WB   | 0.25 - 0.5 µg/ml |
| Application Note  | The dilutions indicate recommended starting dilutions and the optimal dilutions or concentrations should be determined by the scientist. |                  |

### Properties

|                     |  |
|---------------------|--|
| Form                | Liquid   |
| Purification        | Affinity purification with immunogen.  |
| Buffer              | 0.9% NaCl, 0.2% Na <sub>2</sub> HPO <sub>4</sub> , 0.05% Sodium azide and 4% Trehalose.  |
| Preservative        | 0.05% Sodium azide   |
| Stabilizer          | 4% Trehalose   |
| Concentration       | 0.5 mg/ml  |
| Storage instruction | For continuous use, store undiluted antibody at 2-8°C for up to a week. For long-term storage, aliquot and store at -20°C or below. Storage in frost free freezers is not recommended. Avoid repeated freeze/thaw cycles. Suggest spin the vial prior to opening. The antibody solution should be gently mixed before use. |
| Note                | For laboratory research only, not for drug, diagnostic or other use.   |

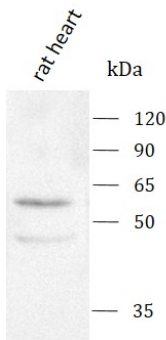
Bioinformation

|                       |   |
|-----------------------|---|
| Gene Symbol           | PHF1  |
| Gene Full Name        | PHD Finger Protein 1  |
| Background            | This gene encodes a Polycomb group protein. The protein is a component of a histone H3 lysine-27 (H3K27)-specific methyltransferase complex, and functions in transcriptional repression of homeotic genes. The protein is also recruited to double-strand breaks, and reduced protein levels results in X-ray sensitivity and increased homologous recombination. Multiple transcript variants encoding different isoforms have been found for this gene.  |
| Function              | Polycomb group (PcG) that specifically binds histone H3 trimethylated at 'Lys-36' (H3K36me3) and recruits the PRC2 complex. Involved in DNA damage response and is recruited at double-strand breaks (DSBs). Acts by binding to H3K36me3, a mark for transcriptional activation, and recruiting the PRC2 complex: it is however unclear whether recruitment of the PRC2 complex to H3K36me3 leads to enhance or inhibit H3K27me3 methylation mediated by the PRC2 complex. According to some reports, PRC2 recruitment by PHF1 promotes H3K27me3 and subsequent gene silencing by inducing spreading of PRC2 and H3K27me3 into H3K36me3 loci. |
| Calculated Mw         | 62 kDa  |
| PTM                   | Phosphoprotein  |
| Cellular Localization | Cytoplasm, Cytoskeleton, Nucleus  |

Images

ARG44068 anti-PHF1 antibody WB image

Western blot: rat heart stained with ARG44068 anti-PHF1 antibody at 0.5 µg/mL dilution.



ARG44068 anti-PHF1 antibody WB image

Western blot: mouse heart and mouse C2C12 stained with ARG44068 anti-PHF1 antibody at 0.5 µg/mL dilution.

