

ARG44076 anti-RUFY1 antibody

Package: 50 µg
Store at: -20°C

Summary

Product Description	Rabbit Polyclonal recognizes RUFY1
Tested Reactivity	Hu
Tested Application	FACS, WB
Host	Rabbit
Clonality	Polyclonal
Isotype	IgG
Target Name	RUFY1
Species	Human
Immunogen	Human RUFY1 recombinant protein (Position: L20-Q650).
Conjugation	Un-conjugated
Alternate Names	FYVE-finger protein EIP1; RUN and FYVE domain-containing protein 1; ZFYVE12; Zinc finger FYVE domain-containing protein 12; Rab4-interacting protein; La-binding protein 1; RABIP4

Application Instructions

Application table	Application	Dilution
	FACS	1 - 3 µg/10 ⁶ cells
	WB	0.25 - 0.5 µg/ml
Application Note	The dilutions indicate recommended starting dilutions and the optimal dilutions or concentrations should be determined by the scientist.	

Properties

Form	Liquid
Purification	Affinity purification with immunogen.
Buffer	0.9% NaCl, 0.2% Na ₂ HPO ₄ , 0.05% Sodium azide and 4% Trehalose.
Preservative	0.05% Sodium azide
Stabilizer	4% Trehalose
Concentration	0.5 mg/ml
Storage instruction	For continuous use, store undiluted antibody at 2-8°C for up to a week. For long-term storage, aliquot and store at -20°C or below. Storage in frost free freezers is not recommended. Avoid repeated freeze/thaw cycles. Suggest spin the vial prior to opening. The antibody solution should be gently mixed before use.
Note	For laboratory research only, not for drug, diagnostic or other use.

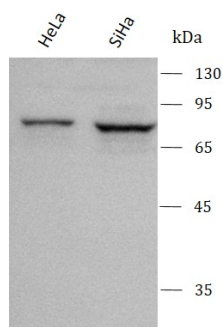
Bioinformation

Gene Symbol	RUFY1
Gene Full Name	RUN and FYVE domain containing 1
Background	This gene encodes a protein that contains a RUN domain and a FYVE-type zinc finger domain. The encoded protein binds to phosphatidylinositol-3-phosphate (PI3P) and plays a role in early endosomal trafficking, tethering and fusion through interactions with small GTPases including Rab4, Rab5 and Rab14. Alternatively spliced transcript variants encoding multiple isoforms have been observed for this gene. [provided by RefSeq, Dec 2011]
Function	Binds phospholipid vesicles containing phosphatidylinositol 3-phosphate and participates in early endosomal trafficking. [UniProt]
Calculated Mw	80 kDa
PTM	Phosphorylation on Tyr-389 and/or Tyr-400 is required for interaction with BMX and endosomal targeting. [UniProt]
Cellular Localization	Cytoplasm. Early endosome membrane; Peripheral membrane protein. [UniProt]

Images

ARG44076 anti-RUFY1 antibody WB image

Western blot: HeLa and SiHa stained with ARG44076 anti-RUFY1 antibody at 0.5 µg/mL dilution.



ARG44076 anti-RUFY1 antibody FACS image

Flow Cytometry: MCF-7 stained with ARG44076 anti-RUFY1 antibody at 1 µg/10⁶ cells dilution.

