

ARG44083 anti-GLI2 antibody

Package: 50 µg
Store at: -20°C

Summary

Product Description	Rabbit Polyclonal recognizes GLI2
Tested Reactivity	Hu, Rat
Tested Application	FACS, ICC/IF, IHC-P, WB
Host	Rabbit
Clonality	Polyclonal
Isotype	IgG
Target Name	GLI2
Species	Human
Immunogen	Human GLI2 recombinant protein (Position: A46-A1398).
Conjugation	Un-conjugated
Alternate Names	Tax helper protein; PHS2; HPE9; Zinc finger protein GLI2; THP1; THP2; GLI family zinc finger protein 2; CJS

Application Instructions

Application table	Application	Dilution
	FACS	1 - 3 µg/10 ⁶ cells
	ICC/IF	5 µg/ml
	IHC-P	2 - 5 µg/ml
	WB	0.25 - 0.5 µg/ml

Application Note The dilutions indicate recommended starting dilutions and the optimal dilutions or concentrations should be determined by the scientist.

Properties

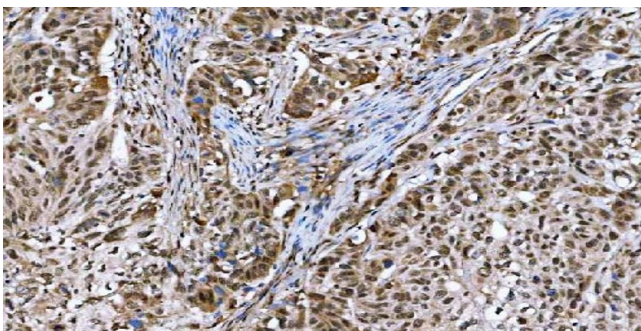
Form	Liquid
Purification	Affinity purification with immunogen.
Buffer	0.9% NaCl, 0.2% Na ₂ HPO ₄ , 0.05% Sodium azide and 4% Trehalose.
Preservative	0.05% Sodium azide
Stabilizer	4% Trehalose
Concentration	0.5 mg/ml
Storage instruction	For continuous use, store undiluted antibody at 2-8°C for up to a week. For long-term storage, aliquot and store at -20°C or below. Storage in frost free freezers is not recommended. Avoid repeated freeze/thaw cycles. Suggest spin the vial prior to opening. The antibody solution should be gently mixed before use.

Note For laboratory research only, not for drug, diagnostic or other use.

Bioinformation

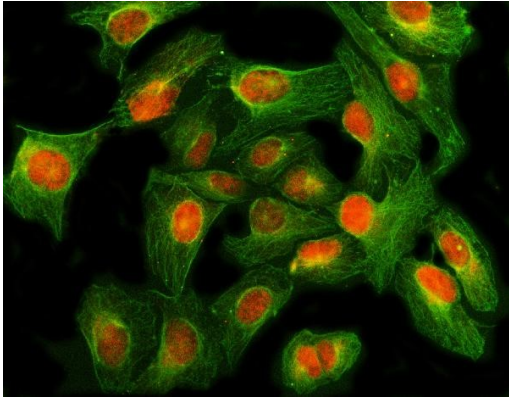
Gene Symbol	GLI2
Gene Full Name	GLI family zinc finger 2
Background	<p>This gene encodes a protein which belongs to the C2H2-type zinc finger protein subclass of the Gli family. Members of this subclass are characterized as transcription factors which bind DNA through zinc finger motifs. These motifs contain conserved H-C links. Gli family zinc finger proteins are mediators of Sonic hedgehog (Shh) signaling and they are implicated as potent oncogenes in the embryonal carcinoma cell. The protein encoded by this gene localizes to the cytoplasm and activates patched Drosophila homolog (PTCH) gene expression. It is also thought to play a role during embryogenesis. The encoded protein is associated with several phenotypes- Greig cephalopolysyndactyly syndrome, Pallister-Hall syndrome, preaxial polydactyly type IV, postaxial polydactyly types A1 and B. [provided by RefSeq, Jul 2008]</p>
Function	<p>Functions as transcription regulator in the hedgehog (Hh) pathway. Functions as transcriptional activator. May also function as transcriptional repressor (By similarity). Requires STK36 for full transcriptional activator activity. Required for normal embryonic development.</p> <p>Isoform 1, isoform 2, isoform 3 and isoform 4: Act as transcriptional activators in T-cell leukemia virus type 1 (HTLV-1)-infected cells in a Tax-dependent manner. Bind to the DNA sequence 5'-GAACCACCCA-3' which is part of the Tax-responsive element (TRE-2S) regulatory element that augments the Tax-dependent enhancer of HTLV-1. Are involved in the smoothed (SHH) signaling pathway.</p> <p>Isoform 5: Acts as a transcriptional repressor. [UniProt]</p>
Calculated Mw	168 kDa
PTM	<p>Phosphorylated in vitro by ULK3. Phosphorylated by DYRK2; this inhibits GLI2 transcription factor activity and promotes proteasomal degradation of GLI2.</p> <p>Acetylation at Lys-757 inhibits Hh target gene expression, probably by impeding entry into chromatin thus preventing promoter occupancy.</p>
Cellular Localization	<p>Nucleus. Cytoplasm. Note=In keratinocytes, it is sequestered in the cytoplasm by SUFU. In the absence of SUFU, it translocates to the nucleus. Isoform 2: Nucleus</p>

Images



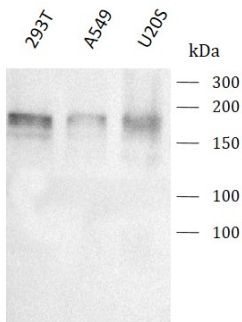
ARG44083 anti-GLI2 antibody IHC-P image

Immunohistochemistry: Human esophageal squamous carcinoma stained with ARG44083 anti-GLI2 antibody at 2 µg/ml dilution.



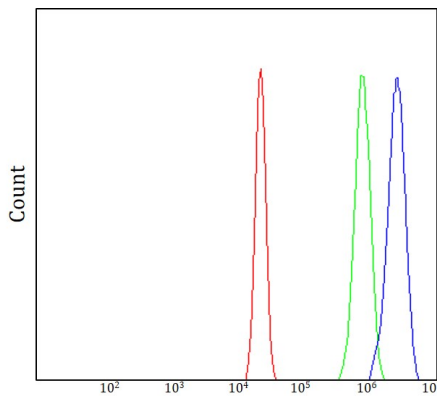
ARG44083 anti-GLI2 antibody ICC/IF image

Immunofluorescence: U2OS stained with ARG44083 anti-GLI2 antibody at 5 $\mu\text{g}/\text{ml}$ dilution.



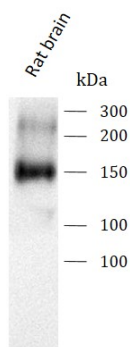
ARG44083 anti-GLI2 antibody WB image

Western blot: 293T, A549 and U2OS stained with ARG44083 anti-GLI2 antibody at 0.5 $\mu\text{g}/\text{mL}$ dilution.



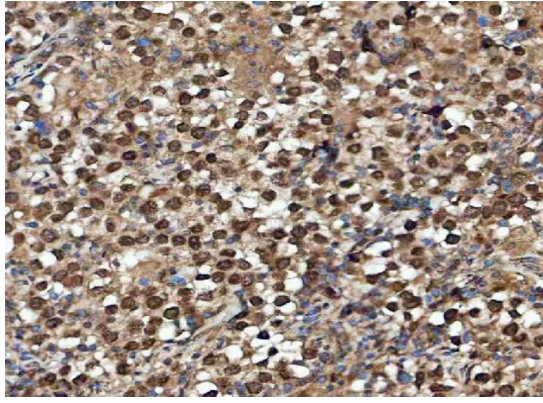
ARG44083 anti-GLI2 antibody FACS image

Flow Cytometry: U2OS stained with ARG44083 anti-GLI2 antibody at 1 $\mu\text{g}/10^6$ cells dilution.



ARG44083 anti-GLI2 antibody WB image

Western blot: Rat brain stained with ARG44083 anti-GLI2 antibody at 0.5 $\mu\text{g}/\text{mL}$ dilution.



ARG44083 anti-GLI2 antibody IHC-P image

Immunohistochemistry: Human testicular germ cell tumors stained with ARG44083 anti-GLI2 antibody at 2 μ g/ml dilution.