

ARG44089 anti-GHRH antibody

Package: 50 µg
Store at: -20°C

Summary

Product Description	Rabbit Polyclonal recognizes GHRH
Tested Reactivity	Hu, Ms, Rat
Tested Application	IHC-P, WB
Host	Rabbit
Clonality	Polyclonal
Isotype	IgG
Target Name	GHRH
Species	Human
Immunogen	Human GHRH recombinant protein (Position: Y32-L75).
Conjugation	Un-conjugated
Alternate Names	Sermorelin; Somatoliberin; Growth hormone-releasing hormone; Growth hormone-releasing factor; GHRF; GRF; INN; GHRH; Somatocrinin; Somatorelin

Application Instructions

Application table	Application	Dilution
	IHC-P	2 - 5 µg/ml
	WB	0.25 - 0.5 µg/ml
Application Note	The dilutions indicate recommended starting dilutions and the optimal dilutions or concentrations should be determined by the scientist.	

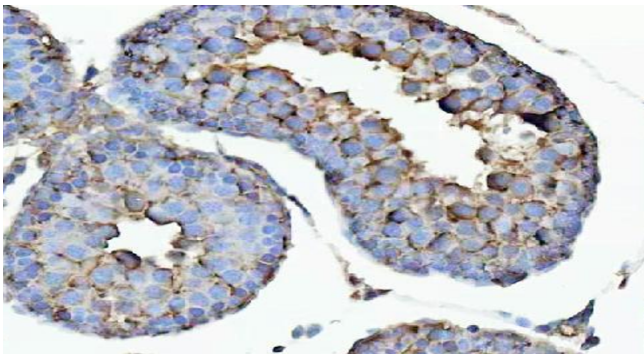
Properties

Form	Liquid
Purification	Affinity purification with immunogen.
Buffer	0.9% NaCl, 0.2% Na ₂ HPO ₄ , 0.05% Sodium azide and 4% Trehalose.
Preservative	0.05% Sodium azide
Stabilizer	4% Trehalose
Concentration	0.5 mg/ml
Storage instruction	For continuous use, store undiluted antibody at 2-8°C for up to a week. For long-term storage, aliquot and store at -20°C or below. Storage in frost free freezers is not recommended. Avoid repeated freeze/thaw cycles. Suggest spin the vial prior to opening. The antibody solution should be gently mixed before use.
Note	For laboratory research only, not for drug, diagnostic or other use.

Bioinformation

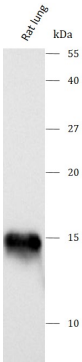
Gene Symbol	GHRH
Gene Full Name	growth hormone releasing hormone
Background	The protein encoded by this gene belongs to the glucagon family and is a preproprotein that is produced in the hypothalamus. The preproprotein is cleaved to form a 44 aa factor, also called somatocrinin, that acts to stimulate growth hormone release from the pituitary. Variant receptors for somatocrinin have been found in several types of tumors, and antagonists of these receptors can inhibit the growth of the tumors. Defects in this gene are a cause of dwarfism, while hypersecretion of the encoded protein is a cause of gigantism. [provided by RefSeq, Jul 2008]
Function	GRF is released by the hypothalamus and acts on the adenohypophyse to stimulate the secretion of growth hormone. [UniProt]
Calculated Mw	12 kDa
Cellular Localization	Secreted. [UniProt]

Images



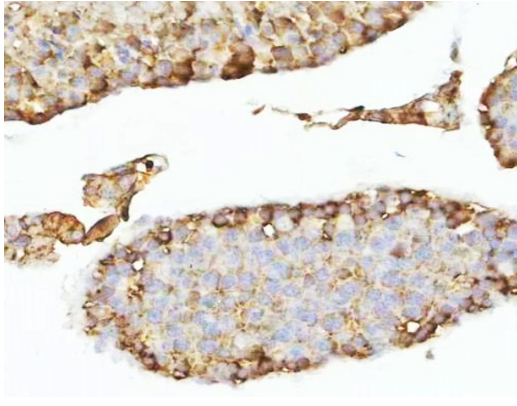
ARG44089 anti-GHRH antibody IHC-P image

Immunohistochemistry: Rat testis stained with ARG44089 anti-GHRH antibody at 2 µg/ml dilution.



ARG44089 anti-GHRH antibody WB image

Western blot: Rat lung stained with ARG44089 anti-GHRH antibody at 0.5 µg/mL dilution.



ARG44089 anti-GHRH antibody IHC-P image

Immunohistochemistry: Mouse testis stained with ARG44089 anti-GHRH antibody at 2 $\mu\text{g}/\text{ml}$ dilution.



ARG44089 anti-GHRH antibody WB image

Western blot: Mouse lung stained with ARG44089 anti-GHRH antibody at 0.5 $\mu\text{g}/\text{mL}$ dilution.