

## ARG44102 anti-PTGR2 antibody

Package: 50 µg  
Store at: -20°C

### Summary

Product Description	Rabbit Polyclonal recognizes PTGR2
Tested Reactivity	Hu
Tested Application	FACS, WB
Host	Rabbit
Clonality	Polyclonal
Isotype	IgG
Target Name	PTGR2
Species	Human
Immunogen	Human PTGR2 recombinant protein (Position: E26-Q305).
Conjugation	Un-conjugated
Alternate Names	PTGR2; Prostaglandin Reductase 2; ZADH1; Zinc-Binding Alcohol Dehydrogenase Domain-Containing Protein 1; 15-Oxoprostaglandin 13-Reductase; EC 1.3.1.48; FLJ39091; PRG-2; Zinc Binding Alcohol Dehydrogenase, Domain Containing 1; Zinc Binding Alcohol Dehydrogenase Domain Containing 1; Epididymis Secretory Sperm Binding Protein; 15-Oxoprostaglandin-Delta13-Reductase; Epididymis Secretory Protein Li 298; HEL-S-298; PGR2

### Application Instructions

Application table	Application	Dilution
	FACS	1 - 3 µg/10 <sup>6</sup> cells
	WB	0.25 - 0.5 µg/ml
Application Note	The dilutions indicate recommended starting dilutions and the optimal dilutions or concentrations should be determined by the scientist.	

### Properties

Form	Liquid
Purification	Affinity purification with immunogen.
Buffer	0.9% NaCl, 0.2% Na <sub>2</sub> HPO <sub>4</sub> , 0.05% Sodium azide and 4% Trehalose.
Preservative	0.05% Sodium azide
Stabilizer	4% Trehalose
Concentration	0.5 mg/ml
Storage instruction	For continuous use, store undiluted antibody at 2-8°C for up to a week. For long-term storage, aliquot and store at -20°C or below. Storage in frost free freezers is not recommended. Avoid repeated freeze/thaw cycles. Suggest spin the vial prior to opening. The antibody solution should be gently mixed before use.

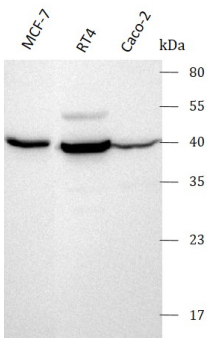
Bioinformation

Gene Symbol	PTGR2
Gene Full Name	Prostaglandin Reductase 2
Background	This gene encodes an enzyme involved in the metabolism of prostaglandins. The encoded protein catalyzes the NADPH-dependent conversion of 15-keto-prostaglandin E2 to 15-keto-13,14-dihydro-prostaglandin E2. This protein may also be involved in regulating activation of the peroxisome proliferator-activated receptor. Alternative splicing results in multiple transcript variants.
Function	Functions as 15-oxo-prostaglandin 13-reductase and acts on 15-keto-PGE1, 15-keto-PGE2, 15-keto-PGE1-alpha and 15-keto-PGE2-alpha with highest activity towards 15-keto-PGE2.
Calculated Mw	38 kDa
Cellular Localization	Cytoplasm

Images

ARG44102 anti-PTGR2 antibody WB image

Western blot: MCF-7, RT4 and Caco-2 stained with ARG44102 anti-PTGR2 antibody at 0.5 µg/mL dilution.



ARG44102 anti-PTGR2 antibody FACS image

Flow Cytometry: RT4 stained with ARG44102 anti-PTGR2 antibody at 1 µg/10^6 cells dilution.

