

## ARG44105 anti-NPTXR antibody

Package: 50 µg  
Store at: -20°C

### Summary

Product Description	Rabbit Polyclonal recognizes NPTXR
Tested Reactivity	Hu, Ms, Rat
Tested Application	FACS, IHC-P, WB
Host	Rabbit
Clonality	Polyclonal
Isotype	IgG
Target Name	NPTXR
Species	Human
Immunogen	Human NPTXR recombinant protein (Position: Q132-A500).
Conjugation	Un-conjugated
Alternate Names	NPTXR 2; Neuronal Pentraxin Receptor; NPR

### Application Instructions

Application table	Application	Dilution
	FACS	1 - 3 µg/10 <sup>6</sup> cells
	IHC-P	2-5 µg/ml
	WB	0.25 - 0.5 µg/ml
Application Note	The dilutions indicate recommended starting dilutions and the optimal dilutions or concentrations should be determined by the scientist.	

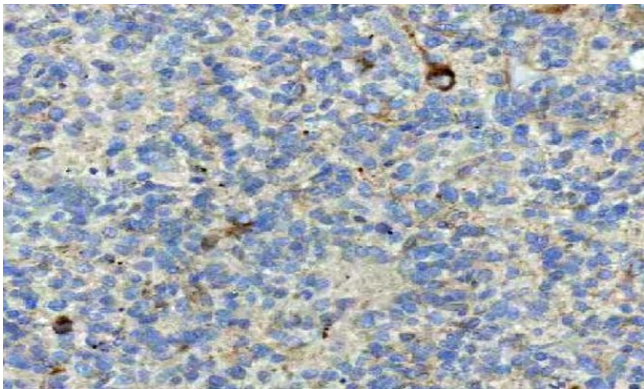
### Properties

Form	Liquid
Purification	Affinity purification with immunogen.
Buffer	0.9% NaCl, 0.2% Na <sub>2</sub> HPO <sub>4</sub> , 0.05% Sodium azide and 4% Trehalose.
Preservative	0.05% Sodium azide
Stabilizer	4% Trehalose
Concentration	0.5 mg/ml
Storage instruction	For continuous use, store undiluted antibody at 2-8°C for up to a week. For long-term storage, aliquot and store at -20°C or below. Storage in frost free freezers is not recommended. Avoid repeated freeze/thaw cycles. Suggest spin the vial prior to opening. The antibody solution should be gently mixed before use.
Note	For laboratory research only, not for drug, diagnostic or other use.

Bioinformation

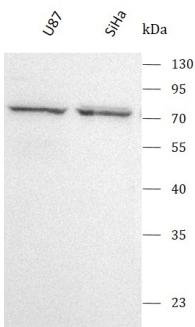
Gene Symbol	NPTXR
Gene Full Name	Neuronal Pentraxin Receptor
Background	This gene encodes a protein similar to the rat neuronal pentraxin receptor. The rat pentraxin receptor is an integral membrane protein that is thought to mediate neuronal uptake of the snake venom toxin, taipoxin, and its transport into the synapses. Studies in rat indicate that translation of this mRNA initiates at a non-AUG (CUG) codon. This may also be true for mouse and human, based on strong sequence conservation amongst these species.
Function	May be involved in mediating uptake of synaptic material during synapse remodeling or in mediating the synaptic clustering of AMPA glutamate receptors at a subset of excitatory synapses.
Calculated Mw	53 kDa
PTM	Disulfide bond, Glycoprotein, Ubl conjugation
Cellular Localization	Membrane

Images



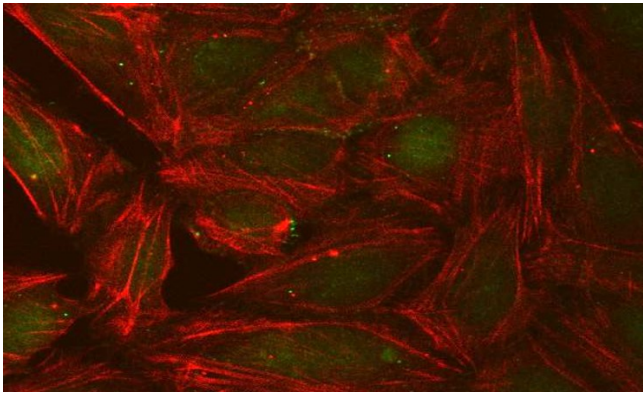
ARG44105 anti-NPTXR antibody IHC-P image

Immunohistochemistry: Human glioma stained with ARG44105 anti-NPTXR antibody at 2 µg/ml dilution.



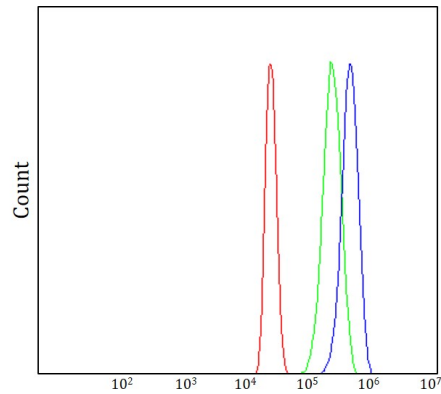
ARG44105 anti-NPTXR antibody WB image

Western blot: U87 and SiHa stained with ARG44105 anti-NPTXR antibody at 0.5 µg/mL dilution.



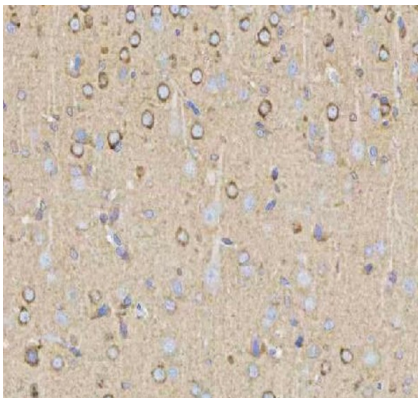
ARG44105 anti-NPTXR antibody ICC/IF image

Immunofluorescence: U2OS stained with ARG44105 anti-NPTXR antibody at 5 µg/ml dilution.



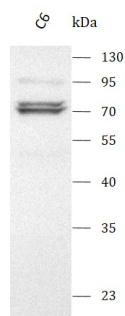
ARG44105 anti-NPTXR antibody FACS image

Flow Cytometry: HepG2 stained with ARG44105 anti-NPTXR antibody at 1 µg/10<sup>6</sup> cells dilution.



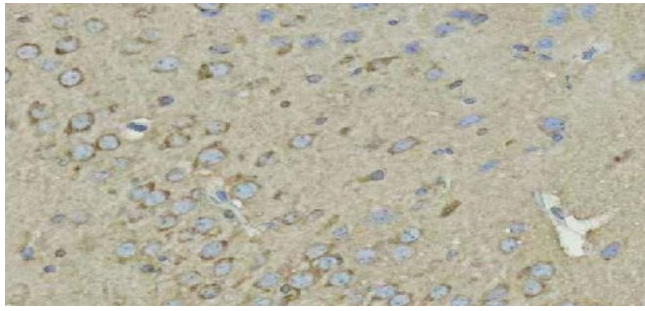
ARG44105 anti-NPTXR antibody IHC-P image

Immunohistochemistry: Rat brain stained with ARG44105 anti-NPTXR antibody at 2 µg/ml dilution.



ARG44105 anti-NPTXR antibody WB image

Western blot: C6 stained with ARG44105 anti-NPTXR antibody at 0.5 µg/mL dilution.



ARG44105 anti-NPTXR antibody IHC-P image

Immunohistochemistry: Mouse brain stained with ARG44105 anti-NPTXR antibody at 2  $\mu$ g/ml dilution.