

## ARG44133 anti-MAD2L2 / REV7 antibody

Package: 50 µg  
Store at: -20°C

### Summary

Product Description	Rabbit Polyclonal recognizes MAD2L2 / REV7
Tested Reactivity	Hu
Tested Application	FACS, ICC/IF, IHC-P, WB
Host	Rabbit
Clonality	Polyclonal
Isotype	IgG
Target Name	MAD2L2 / REV7
Species	Human
Immunogen	Human MAD2L2 / REV7 recombinant protein (Position: M1-K209).
Conjugation	Un-conjugated
Alternate Names	MAD2L2; Mitotic Arrest Deficient 2 Like 2; MAD2B; REV7; POLZ2; FANCV; MAD2 (Mitotic Arrest Deficient, Yeast, Homolog)-Like 2; Polymerase (DNA-Directed), Zeta 2, Accessory Subunit; Mitotic Spindle Assembly Checkpoint Protein MAD2B; Mitotic Arrest Deficient 2-Like Protein 2; Mitotic Arrest Deficient Homolog-Like 2; MAD2-Like Protein 2; REV7 Homolog; HREV7; MAD2 Mitotic Arrest Deficient-Like 2

### Application Instructions

Application table	Application	Dilution
	FACS	1 - 3 µg/10 <sup>6</sup> cells
	ICC/IF	5 µg/ml
	IHC-P	2 - 5 µg/ml
	WB	0.25 - 0.5 µg/ml
Application Note	The dilutions indicate recommended starting dilutions and the optimal dilutions or concentrations should be determined by the scientist.	

### Properties

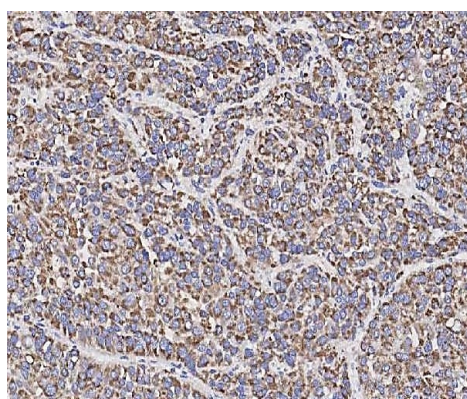
Form	Liquid
Purification	Affinity purification with immunogen.
Buffer	0.9% NaCl, 0.2% Na <sub>2</sub> HPO <sub>4</sub> , 0.05% Sodium azide and 4% Trehalose.
Preservative	0.05% Sodium azide
Stabilizer	4% Trehalose
Concentration	0.5 mg/ml

Storage instruction	For continuous use, store undiluted antibody at 2-8°C for up to a week. For long-term storage, aliquot and store at -20°C or below. Storage in frost free freezers is not recommended. Avoid repeated freeze/thaw cycles. Suggest spin the vial prior to opening. The antibody solution should be gently mixed before use.
Note	For laboratory research only, not for drug, diagnostic or other use.

## Bioinformation

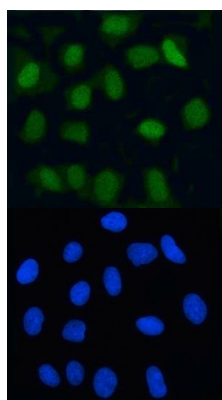
Gene Symbol	MAD2L2
Gene Full Name	Mitotic Arrest Deficient 2 Like 2
Background	The protein encoded by this gene is a component of the mitotic spindle assembly checkpoint that prevents the onset of anaphase until all chromosomes are properly aligned at the metaphase plate. The encoded protein, which is similar to MAD2L1, is capable of interacting with ADAM9, ADAM15, REV1, and REV3 proteins.
Function	Adapter protein able to interact with different proteins and involved in different biological processes.
Research Area	Disease variant, Fanconi anemia
Calculated Mw	24 kDa
PTM	Chromosome, Cytoplasm, Cytoskeleton, Nucleus

## Images



ARG44133 anti-MAD2L2 / REV7 antibody IHC-P image

Immunohistochemistry: Human liver cancer stained with ARG44133 anti-MAD2L2 / REV7 antibody at 2 µg/ml dilution.

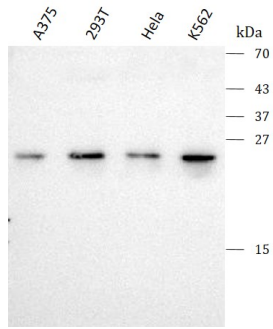


ARG44133 anti-MAD2L2 / REV7 antibody ICC/IF image

Immunofluorescence: U2OS stained with ARG44133 anti-MAD2L2 / REV7 antibody at 5 µg/ml dilution.

#### ARG44133 anti-MAD2L2 / REV7 antibody WB image

Western blot: A375, 293T, HeLa and K562 stained with ARG44133 anti-MAD2L2 / REV7 antibody at 0.5 µg/ml dilution.



#### ARG44133 anti-MAD2L2 / REV7 antibody FACS image

Flow Cytometry: HeLa stained with ARG44133 anti-MAD2L2 / REV7 antibody at 1 µg/10<sup>6</sup> cells dilution.

