

## ARG44138 anti-MARS2 antibody

Package: 50 µg  
Store at: -20°C

### Summary

Product Description	Rabbit Polyclonal recognizes MARS2
Tested Reactivity	Hu, Ms, Rat
Tested Application	WB
Host	Rabbit
Clonality	Polyclonal
Isotype	IgG
Target Name	MARS2
Species	Human
Immunogen	Human MARS2 recombinant protein (Position: H143-A590).
Conjugation	Un-conjugated
Alternate Names	MARS2; Methionyl-TRNA Synthetase 2, Mitochondrial; MtMetRS; Methionine TRNA Ligase 2, Mitochondrial; Methionine--TRNA Ligase, Mitochondrial; EC 6.1.1.10; SPAX3; Methionine-TRNA Synthetase 2, Mitochondrial; Mitochondrial Methionyl-TRNA Synthetase; Methionyl-TRNA Synthetase 2; Methionine--TRNA Ligase 2; EC 6.1.1; COXPD25; MetRS

### Application Instructions

Application table	Application	Dilution
	WB	0.25 - 0.5 µg/ml
Application Note	The dilutions indicate recommended starting dilutions and the optimal dilutions or concentrations should be determined by the scientist.	

### Properties

Form	Liquid
Purification	Affinity purification with immunogen.
Buffer	0.9% NaCl, 0.2% Na <sub>2</sub> HPO <sub>4</sub> , 0.05% Sodium azide and 4% Trehalose.
Preservative	0.05% Sodium azide
Stabilizer	4% Trehalose
Concentration	0.5 mg/ml
Storage instruction	For continuous use, store undiluted antibody at 2-8°C for up to a week. For long-term storage, aliquot and store at -20°C or below. Storage in frost free freezers is not recommended. Avoid repeated freeze/thaw cycles. Suggest spin the vial prior to opening. The antibody solution should be gently mixed before use.
Note	For laboratory research only, not for drug, diagnostic or other use.

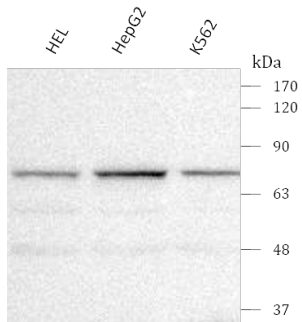
## Bioinformation

Gene Symbol	MARS2
Gene Full Name	Methionyl-TRNA Synthetase 2, Mitochondrial
Background	This gene produces a mitochondrial methionyl-tRNA synthetase protein that is encoded by the nuclear genome and imported to the mitochondrion. This protein likely functions as a monomer and is predicted to localize to the mitochondrial matrix. Mutations in this gene are associated with the autosomal recessive neurodegenerative disease spastic ataxia-3 (SPAX3).
Function	ATP + L-methionine + tRNA(Met) = AMP + diphosphate + L-methionyl-tRNA(Met).
Research Area	Deafness, Disease variant, Neurodegeneration, Primary mitochondrial disease
Calculated Mw	67 kDa
Cellular Localization	Mitochondrion

## Images

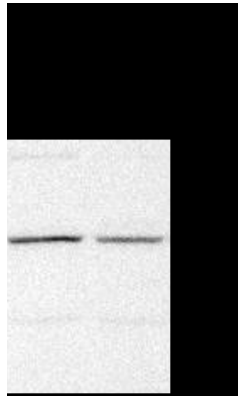
ARG44138 anti-MARS2 antibody WB image

Western blot: HEL, HepG2 and K562 stained with ARG44138 anti-MARS2 antibody at 0.5 µg/ml dilution.



ARG44138 anti-MARS2 antibody WB image

Western blot: C6 and PC-12 stained with ARG44138 anti-MARS2 antibody at 0.5 µg/ml dilution.



ARG44138 anti-MARS2 antibody WB image

Western blot: Neuro-2a and Raw264.7 stained with ARG44138 anti-MARS2 antibody at 0.5 µg/ml dilution.

