

ARG44147 anti-MIGA1 antibody

Package: 50 µg
Store at: -20°C

Summary

Product Description	Rabbit Polyclonal recognizes MIGA1
Tested Reactivity	Hu, Ms, Rat
Tested Application	FACS, WB
Host	Rabbit
Clonality	Polyclonal
Isotype	IgG
Target Name	MIGA1
Species	Human
Immunogen	Human MIGA1 recombinant protein (Position: R316-Q562).
Conjugation	Un-conjugated
Alternate Names	MIGA1; Mitoguardin 1; FAM73A; Protein FAM73A; FLJ35093; Family With Sequence Similarity 73, Member A; Family With Sequence Similarity 73 Member A

Application Instructions

Application table	Application	Dilution
	FACS	1 - 3 µg/10 ⁶ cells
	WB	0.25 - 0.5 µg/ml
Application Note	The dilutions indicate recommended starting dilutions and the optimal dilutions or concentrations should be determined by the scientist.	

Properties

Form	Liquid
Purification	Affinity purification with immunogen.
Buffer	0.9% NaCl, 0.2% Na ₂ HPO ₄ , 0.05% Sodium azide and 4% Trehalose.
Preservative	0.05% Sodium azide
Stabilizer	4% Trehalose
Concentration	0.5 mg/ml
Storage instruction	For continuous use, store undiluted antibody at 2-8°C for up to a week. For long-term storage, aliquot and store at -20°C or below. Storage in frost free freezers is not recommended. Avoid repeated freeze/thaw cycles. Suggest spin the vial prior to opening. The antibody solution should be gently mixed before use.
Note	For laboratory research only, not for drug, diagnostic or other use.

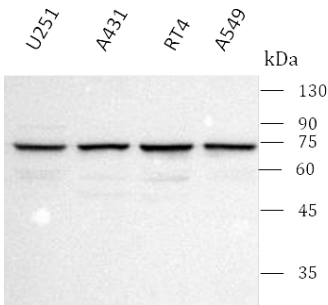
Bioinformation

Gene Symbol	MIGA1
Gene Full Name	Mitoguardin 1
Background	Enables protein heterodimerization activity and protein homodimerization activity. Involved in mitochondrial fusion. Located in mitochondrion. Is integral component of plasma membrane.
Function	Regulator of mitochondrial fusion: acts by forming homo- and heterodimers at the mitochondrial outer membrane and facilitating the formation of PLD6/MitoPLD dimers. May act by regulating phospholipid metabolism via PLD6/MitoPLD.
Calculated Mw	71 kDa
PTM	Phosphoprotein
Cellular Localization	Membrane, Mitochondrion, Mitochondrion outer membrane

Images

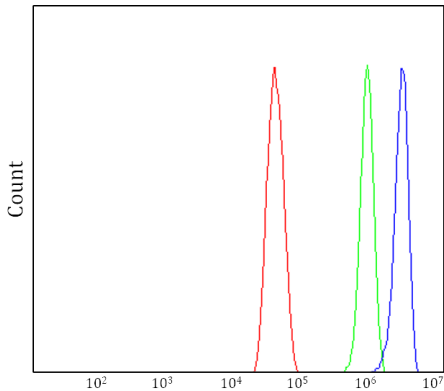
ARG44147 anti-MIGA1 antibody WB image

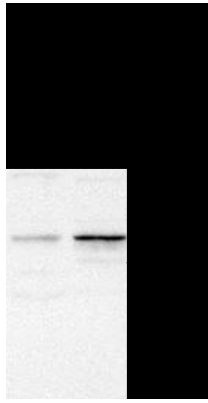
Western blot: U251, A431, RT4 and A549 stained with ARG44147 anti-MIGA1 antibody at 0.5 µg/ml dilution.



ARG44147 anti-MIGA1 antibody FACS image

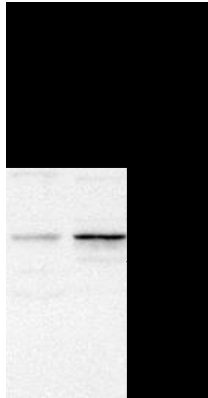
Flow Cytometry: U251 stained with ARG44147 anti-MIGA1 antibody at 1 µg/10^6 cells dilution.





ARG44147 anti-MIGA1 antibody WB image

Western blot: Rat brain and Rat kidney stained with ARG44147 anti-MIGA1 antibody at 0.5 µg/ml dilution.



ARG44147 anti-MIGA1 antibody WB image

Western blot: Mouse brain and Mouse kidney stained with ARG44147 anti-MIGA1 antibody at 0.5 µg/ml dilution.
