

ARG44148 anti-EMR1 F4 / 80 antibody

Package: 50 µg
Store at: -20°C

Summary

Product Description	Rabbit Polyclonal recognizes EMR1 F4 / 80
Tested Reactivity	Ms, Rat
Tested Application	IHC-P
Host	Rabbit
Clonality	Polyclonal
Isotype	IgG
Target Name	EMR1 F4 / 80
Species	Mouse
Immunogen	Mouse EMR1 F4/80 recombinant protein (Position: G27-S230).
Conjugation	Un-conjugated

Application Instructions

Application table	Application	Dilution
	IHC-P	2 - 5 µg/ml
Application Note	The dilutions indicate recommended starting dilutions and the optimal dilutions or concentrations should be determined by the scientist.	

Properties

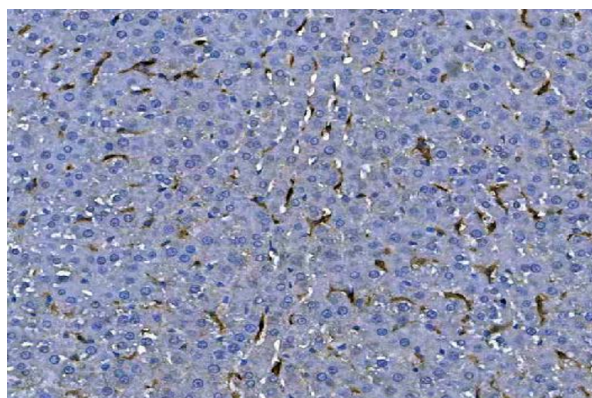
Form	Liquid
Purification	Affinity purification with immunogen.
Buffer	PBS, 0.02% sodium azide, 50% glycerol and 1 mg/ml BSA
Preservative	0.02% sodium azide
Stabilizer	50% glycerol and 1 mg/ml BSA
Concentration	0.5 mg/ml
Storage instruction	For continuous use, store undiluted antibody at 2-8°C for up to a week. For long-term storage, aliquot and store at -20°C or below. Storage in frost free freezers is not recommended. Avoid repeated freeze/thaw cycles. Suggest spin the vial prior to opening. The antibody solution should be gently mixed before use.
Note	For laboratory research only, not for drug, diagnostic or other use.

Bioinformation

Gene Symbol	Adgre1
-------------	--------

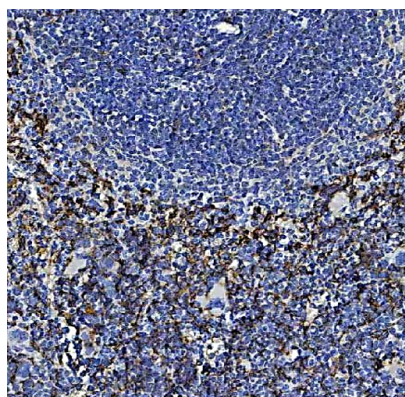
Gene Full Name	adhesion G protein-coupled receptor E1
Background	EMR1 F4/80 has a domain resembling seven transmembrane G protein-coupled hormone receptors (7TM receptors) at its C-terminus. The N-terminus of the encoded protein has six EGF-like modules, separated from the transmembrane segments by a serine/threonine-rich domain, a feature reminiscent of mucin-like, single-span, integral membrane glycoproteins with adhesive properties. Multiple alternatively spliced transcript variants encoding different isoforms have been found for this gene. [provided by RefSeq, Jan 2012]
Function	EMR1 F4/80: Orphan receptor involved in cell adhesion and probably in cell-cell interactions specifically involving cells of the immune system. May play a role in regulatory T-cells (Treg) development. [UniProt]
Highlight	<p>Related Antibody Duos and Panels: ARG30326 Inflammatory Cell Antibody Panel (for mouse)</p> <p>Related products: EMR1 F4/80 antibodies; EMR1 F4/80 Duos / Panels; Anti-Rat IgG secondary antibodies;</p> <p>Related news: Exploring Antiviral Immune Response</p>
Research Area	Mouse Inflammatory Cell Marker antibody; Macrophage Marker antibody
Calculated Mw	98 kDa

Images



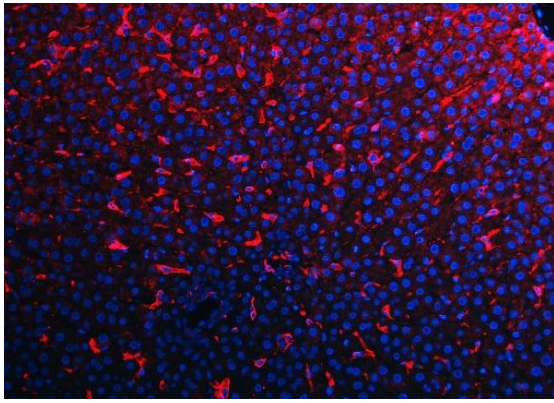
ARG44148 anti-EMR1 F4/80 antibody IHC-P image

Immunohistochemistry: Rat liver stained with ARG44148 anti-EMR1 F4/80 antibody at 2 µg/ml dilution.



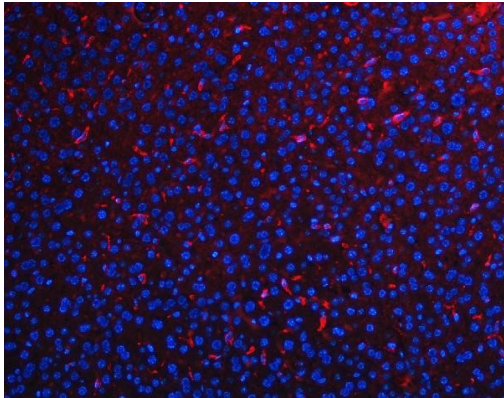
ARG44148 anti-EMR1 F4/80 antibody IHC-P image

Immunohistochemistry: Mouse spleen stained with ARG44148 anti-EMR1 F4/80 antibody at 2 µg/ml dilution.



ARG44148 anti-EMR1 F4/80 antibody IHC-P image

Immunohistochemistry: Rat liver stained with ARG44148 anti-EMR1 F4/80 antibody at 5 μ g/ml dilution.



ARG44148 anti-EMR1 F4/80 antibody IHC-P image

Immunohistochemistry: Mouse liver stained with ARG44148 anti-EMR1 F4/80 antibody at 5 μ g/ml dilution.