

ARG44166 anti-MUC3A + MUC3B antibody

Package: 50 µg
Store at: -20°C

Summary

Product Description	Rabbit Polyclonal antibody recognizes MUC3A + MUC3B
Tested Reactivity	Hu
Tested Application	ICC/IF, WB
Host	Rabbit
Clonality	Polyclonal
Isotype	IgG
Target Name	MUC3A + MUC3B
Species	Human
Immunogen	Recombinant protein of Human MUC3A + MUC3B
Conjugation	Un-conjugated
Alternate Names	MUC3A; Mucin 3A, Cell Surface Associated; MUC3; Mucin-3A; MUC-3A; Mucin 3A, Intestinal; Mucin 3, Intestinal; Intestinal Mucin-3A; Intestinal Mucin; MUC3B; Mucin 3B, Cell Surface Associated; Intestinal Mucin-3B; Mucin-3B; MUC-3B; Intestinal Mucin MUC3B; Mucin 3B; MUC3A; MUC3

Application Instructions

Application table	Application	Dilution
	ICC/IF	5 µg/ml
	WB	0.25-0.5 µg/ml
Application Note	* The dilutions indicate recommended starting dilutions and the optimal dilutions or concentrations should be determined by the scientist.	
Observed Size	>300 kDa	

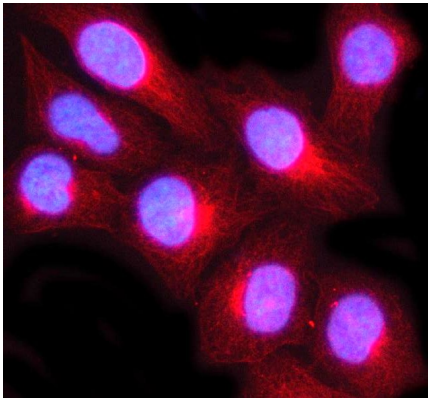
Properties

Form	Liquid
Purification	Affinity purification with immunogen.
Buffer	0.9% NaCl, 0.2% Na ₂ HPO ₄ , 0.05% Sodium azide and 5% BSA.
Preservative	0.05% Sodium azide
Stabilizer	5% BSA
Concentration	0.5 mg/ml
Storage instruction	For continuous use, store undiluted antibody at 2-8°C for up to a week. For long-term storage, aliquot and store at -20°C or below. Storage in frost free freezers is not recommended. Avoid repeated freeze/thaw cycles. Suggest spin the vial prior to opening. The antibody solution should be gently mixed before use.

Bioinformation

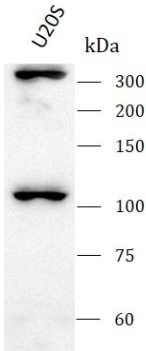
Gene Symbol	MUC3A + MUC3B
Gene Full Name	Mucin 3A, Cell Surface Associated + Mucin 3B, Cell Surface Associated
Background	<p>MUC3A: The mucin genes encode epithelial glycoproteins, some of which are secreted and some membrane bound. Each of the genes contains at least one large domain of tandemly repeated sequence that encodes the peptide sequence rich in serine and/or threonine residues, which carries most of the O-linked glycosylation.</p> <p>MUC3B: MUC3B (Mucin 3B, Cell Surface Associated) is a Protein Coding gene.</p>
Function	<p>MUC3A: Major glycoprotein component of a variety of mucus gels. Thought to provide a protective, lubricating barrier against particles and infectious agents at mucosal surfaces. May be involved in ligand binding and intracellular signaling.</p> <p>MUC3B: Major glycoprotein component of a variety of mucus gels. Thought to provide a protective, lubricating barrier against particles and infectious agents at mucosal surfaces</p>
PTM	Autocatalytic cleavage, Disulfide bond, Glycoprotein
Cellular Localization	Membrane, Secreted

Images



ARG44166 anti-MUC3A + MUC3B antibody ICC/IF image

Immunofluorescence: U2OS stained with ARG44166 anti-MUC3A + MUC3B antibody at 5 µg/mL dilution.



ARG44166 anti-MUC3A + MUC3B antibody WB image

Western blot: U2OS stained with ARG44166 anti-MUC3A + MUC3B antibody at 0.5 µg/mL dilution.