

## ARG44172 anti-NTHL1 antibody

Package: 50 µg  
Store at: -20°C

### Summary

Product Description	Rabbit Polyclonal antibody recognizes NTHL1
Tested Reactivity	Hu
Tested Application	FACS, ICC/IF, WB
Host	Rabbit
Clonality	Polyclonal
Isotype	IgG
Target Name	NTHL1
Species	Human
Immunogen	Recombinant protein of Human NTHL1
Conjugation	Un-conjugated
Alternate Names	NTHL1; Nth Like DNA Glycosylase 1; OCTS3; NTH1; Bifunctional DNA N-Glycosylase/DNA-(Apurinic Or Apyrimidinic Site) Lyase; Endonuclease III-Like Protein 1; DNA Glycosylase/AP Lyase; HNTH1; Bifunctional DNA N-Glycosylase/DNA-(Apurinic Or Apyrimidinic Site) Lyase; Nth Endonuclease III-Like 1 (E. Coli); Nth (E.Coli Endonuclease III)-Like 1; Nth Endonuclease III-Like 1; DNA Glycosylase/AP Lyase; EC 4.2.99.18; EC 3.2.2.- ; FAP3

### Application Instructions

Application table	Application	Dilution
	FACS	1-3 µg / 10 <sup>6</sup> cells
	ICC/IF	5 µg/ml
	WB	0.1-0.25 µg/ml
Application Note	* The dilutions indicate recommended starting dilutions and the optimal dilutions or concentrations should be determined by the scientist.	

### Properties

Form	Liquid
Purification	Affinity purification with immunogen.
Buffer	0.9% NaCl, 0.2% Na <sub>2</sub> HPO <sub>4</sub> , 0.05% Sodium azide and 5% BSA.
Preservative	0.05% Sodium azide
Stabilizer	5% BSA
Concentration	0.5 mg/ml
Storage instruction	For continuous use, store undiluted antibody at 2-8°C for up to a week. For long-term storage, aliquot and store at -20°C or below. Storage in frost free freezers is not recommended. Avoid repeated

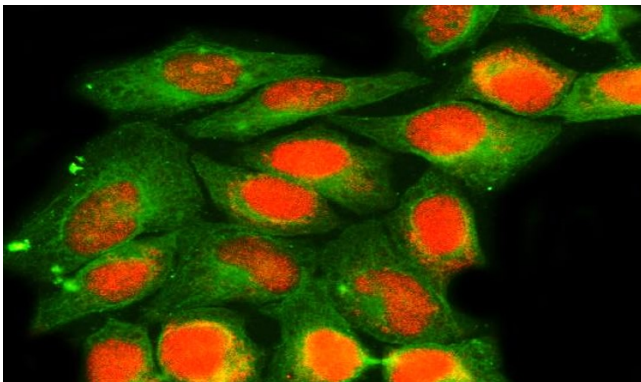
freeze/thaw cycles. Suggest spin the vial prior to opening. The antibody solution should be gently mixed before use.

**Note** For laboratory research only, not for drug, diagnostic or other use.

## Bioinformation

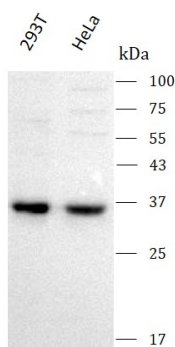
Gene Symbol	NTHL1
Gene Full Name	Nth Like DNA Glycosylase 1
Background	The protein encoded by this gene is a DNA N-glycosylase of the endonuclease III family. Like a similar protein in <i>E. coli</i> , the encoded protein has DNA glycosylase activity on DNA substrates containing oxidized pyrimidine residues and has apurinic/apyrimidinic lyase activity.
Function	Bifunctional DNA N-glycosylase with associated apurinic/apyrimidinic (AP) lyase function that catalyzes the first step in base excision repair (BER), the primary repair pathway for the repair of oxidative DNA damage.
Calculated Mw	34 kDa
PTM	Phosphoprotein, Ubl conjugation
Cellular Localization	Mitochondrion, Nucleus

## Images



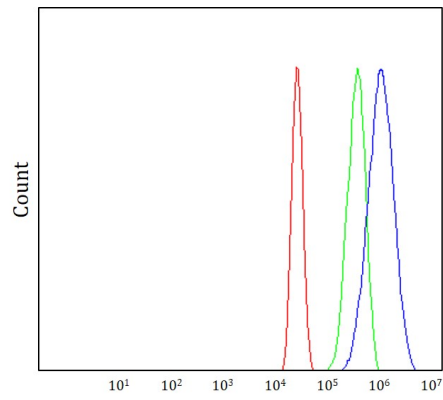
ARG44172 anti-NTHL1 antibody ICC/IF image

Immunofluorescence: HeLa stained with ARG44172 anti-NTHL1 antibody at 5 µg/mL dilution.



ARG44172 anti-NTHL1 antibody WB image

Western blot: 293T and HeLa stained with ARG44172 anti-NTHL1 antibody at 0.5 µg/mL dilution.



#### ARG44172 anti-NTHL1 antibody FACS image

Flow Cytometry: MCF-7 stained with ARG44172 anti-NTHL1 antibody at  $1\text{ }\mu\text{g}/1 \times 10^6$  cells dilution.