

ARG44185 anti-MPHOSPH10 antibody

Package: 50 µg
Store at: -20°C

Summary

Product Description	Rabbit Polyclonal antibody recognizes MPHOSPH10
Tested Reactivity	Hu
Tested Application	FACS, ICC/IF, WB
Host	Rabbit
Clonality	Polyclonal
Isotype	IgG
Target Name	MPHOSPH10
Species	Human
Immunogen	Recombinant protein of Human MPHOSPH10
Conjugation	Un-conjugated
Alternate Names	MPHOSPH10; M-Phase Phosphoprotein 10; MPP10; PPP1R106; MPP10P; CT90; U3 Small Nucleolar Ribonucleoprotein Protein MPP10; Protein Phosphatase 1, Regulatory Subunit 106; U3 Small Nucleolar Ribonucleoprotein; M Phase Phosphoprotein 10; M-Phase Phosphoprotein 10 (U3 Small Nucleolar Ribonucleoprotein)

Application Instructions

Application table	Application	Dilution
	FACS	1-3 µg/1x10 ⁶ cells
	ICC/IF	5 µg/ml
	WB	0.1-0.25 µg/ml
Application Note	* The dilutions indicate recommended starting dilutions and the optimal dilutions or concentrations should be determined by the scientist.	

Properties

Form	Liquid
Purification	Affinity purification with immunogen.
Buffer	0.9% NaCl, 0.2% Na ₂ HPO ₄ , 0.05% Sodium azide and 5% BSA.
Preservative	0.05% Sodium azide
Stabilizer	5% BSA
Concentration	0.5 mg/ml
Storage instruction	For continuous use, store undiluted antibody at 2-8°C for up to a week. For long-term storage, aliquot and store at -20°C or below. Storage in frost free freezers is not recommended. Avoid repeated freeze/thaw cycles. Suggest spin the vial prior to opening. The antibody solution should be gently mixed

before use.

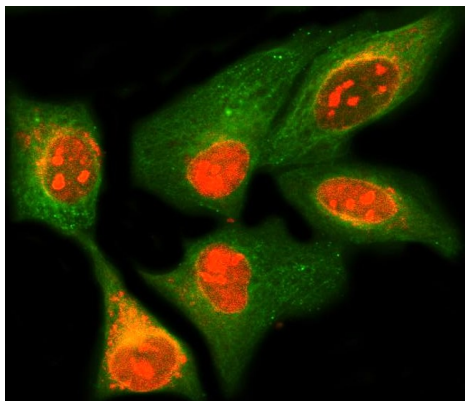
Note

For laboratory research only, not for drug, diagnostic or other use.

Bioinformation

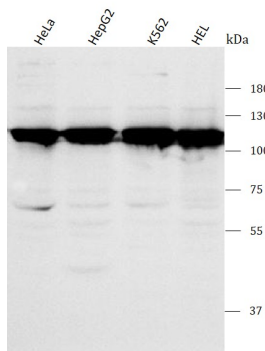
Gene Symbol	MPHOSPH10
Gene Full Name	M-Phase Phosphoprotein 10
Background	This gene encodes a protein that is phosphorylated during mitosis. The protein localizes to the nucleolus during interphase and to the chromosomes during M phase. The protein associates with the U3 small nucleolar ribonucleoprotein 60-80S complexes and may be involved in pre-rRNA processing.
Function	Component of the 60-80S U3 small nucleolar ribonucleoprotein (U3 snoRNP). Required for the early cleavages during pre-18S ribosomal RNA processing.
Calculated Mw	79 kDa
PTM	Acetylation, Isopeptide bond, Phosphoprotein, Ubl conjugation
Cellular Localization	Chromosome, Nucleus

Images



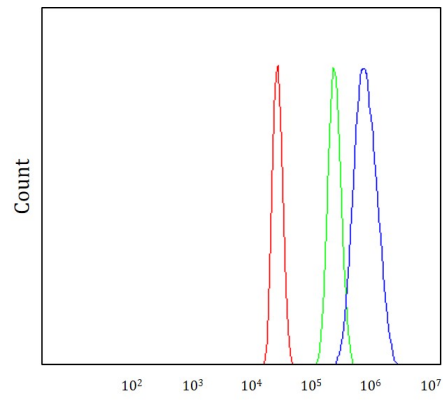
ARG44185 anti-MPHOSPH10 antibody ICC/IF image

Immunofluorescence: HeLa stained with ARG44185 anti-MPHOSPH10 antibody at 5 µg/mL dilution.



ARG44185 anti-MPHOSPH10 antibody WB image

Western blot: HeLa, HepG2, K562 and HEL stained with ARG44185 anti-MPHOSPH10 antibody at 0.25 µg/mL dilution.



ARG44185 anti-MPHOSPH10 antibody FACS image

Flow Cytometry: HepG2 stained with ARG44185 anti-MPHOSPH10 antibody at $1\text{ }\mu\text{g}/1\times 10^6$ cells dilution.