

## ARG44186 anti-RSPH3 antibody

Package: 50 µg  
Store at: -20°C

### Summary

Product Description	Rabbit Polyclonal antibody recognizes RSPH3
Tested Reactivity	Hu
Tested Application	FACS, WB
Host	Rabbit
Clonality	Polyclonal
Isotype	IgG
Target Name	RSPH3
Species	Human
Immunogen	Recombinant protein of Human RSPH3
Conjugation	Un-conjugated
Alternate Names	RSPH3; Radial Spoke Head 3; RSP3; DJ111C20.1; RSHL2; Radial Spoke Head Protein 3 Homolog; Radial Spoke Head-Like Protein 2; A-Kinase Anchor Protein RSPH3; Radial Spoke Head 3 Homolog (Chlamydomonas); Radial Spoke Head 3 Homolog; Radial Spokehead-Like 2; Radial Spoke 3 Homolog; CILD32

### Application Instructions

Application table	Application	Dilution
	FACS	1-3 µg/1x10 <sup>6</sup> cells
	WB	0.25-0.5 µg/ml
Application Note	* The dilutions indicate recommended starting dilutions and the optimal dilutions or concentrations should be determined by the scientist.	

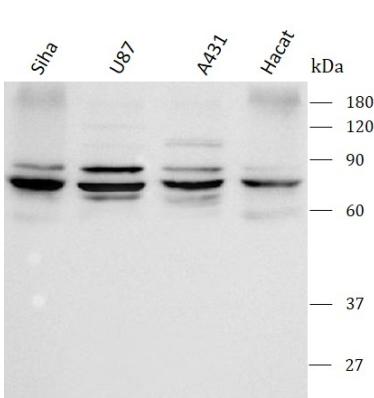
### Properties

Form	Liquid
Purification	Affinity purification with immunogen.
Buffer	0.9% NaCl, 0.2% Na <sub>2</sub> HPO <sub>4</sub> , 0.05% Sodium azide and 5% BSA.
Preservative	0.05% Sodium azide
Stabilizer	5% BSA
Concentration	0.5 mg/ml
Storage instruction	For continuous use, store undiluted antibody at 2-8°C for up to a week. For long-term storage, aliquot and store at -20°C or below. Storage in frost free freezers is not recommended. Avoid repeated freeze/thaw cycles. Suggest spin the vial prior to opening. The antibody solution should be gently mixed before use.

Bioinformation

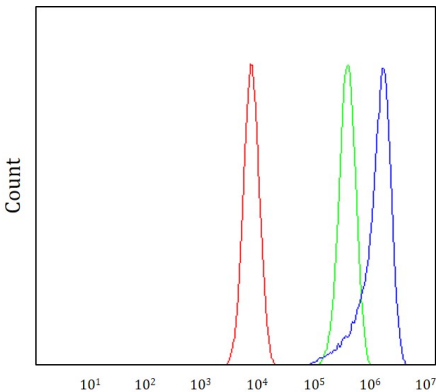
Gene Symbol	RSPH3
Gene Full Name	Radial Spoke Head 3
Background	The protein encoded by this gene acts as a protein kinase A anchoring protein. Mutations in this gene cause primary ciliary dyskinesia; a disorder characterized by defects of the axoneme in motile cilia and sperm flagella. The homolog of this gene was first identified in the blue-green algae Chlamydomonas as encoding a radial spoke protein that formed a structural component of motile cilia and flagella. Alternate splicing results in multiple transcript variants encoding distinct isoforms.
Function	Functions as part of axonemal radial spoke complexes that play an important part in the motility of sperm and cilia.
Calculated Mw	64 kDa
PTM	Phosphoprotein
Cellular Localization	Cell projection, Cilium, Cytoplasm, Cytoskeleton, Flagellum

Images



ARG44186 anti-RSPH3 antibody WB image

Western blot: Siha, U87, A431 and Hacat stained with ARG44186 anti-RSPH3 antibody at 0.5 µg/mL dilution.



ARG44186 anti-RSPH3 antibody FACS image

Flow Cytometry: K562 stained with ARG44186 anti-RSPH3 antibody at 1 µg/1x10^6 cells dilution.