

ARG44194 anti-MIS18A antibody

Package: 50 µg
Store at: -20°C

Summary

Product Description	Rabbit Polyclonal antibody recognizes MIS18A
Tested Reactivity	Hu
Tested Application	FACS, ICC/IF, WB
Host	Rabbit
Clonality	Polyclonal
Isotype	IgG
Target Name	MIS18A
Species	Human
Immunogen	Recombinant protein of Human MIS18A
Conjugation	Un-conjugated
Alternate Names	MIS18A; MIS18 Kinetochores Protein A; FASP1; Hmis18alpha; C21orf45; C21orf46; B28; FAPP1-Associated Protein 1; Protein Mis18-Alpha; MIS18 Kinetochores Protein Homolog A (S. Pombe); Chromosome 21 Open Reading Frame 46; Chromosome 21 Open Reading Frame 45; MIS18 Kinetochores Protein Homolog A; MIS18alpha

Application Instructions

Application table	Application	Dilution
	FACS	1-3 µg/1x10 ⁶ cells
	ICC/IF	5 µg/ml
	WB	0.25-0.5 µg/ml
Application Note	* The dilutions indicate recommended starting dilutions and the optimal dilutions or concentrations should be determined by the scientist.	

Properties

Form	Liquid
Purification	Affinity purification with immunogen.
Buffer	0.9% NaCl, 0.2% Na ₂ HPO ₄ , 0.05% Sodium azide and 5% BSA.
Preservative	0.05% Sodium azide
Stabilizer	5% BSA
Concentration	0.5 mg/ml
Storage instruction	For continuous use, store undiluted antibody at 2-8°C for up to a week. For long-term storage, aliquot and store at -20°C or below. Storage in frost free freezers is not recommended. Avoid repeated freeze/thaw cycles. Suggest spin the vial prior to opening. The antibody solution should be gently mixed

before use.

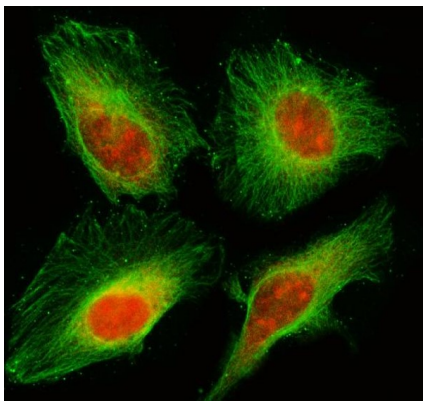
Note

For laboratory research only, not for drug, diagnostic or other use.

Bioinformation

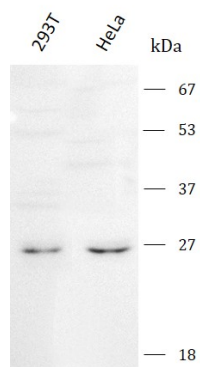
Gene Symbol	MIS18A
Gene Full Name	Mis18 Kinetochore Protein A
Background	Enables identical protein binding activity. Predicted to be involved in CENP-A containing chromatin assembly and chromosome segregation. Predicted to act upstream of or within regulation of DNA methylation. Located in cytosol and nucleoplasm.
Function	Required for recruitment of CENPA to centromeres and normal chromosome segregation during mitosis.
Calculated Mw	26 kDa
PTM	Isopeptide bond, Phosphoprotein, Ubl conjugation
Cellular Localization	Centromere, Chromosome, Nucleus

Images



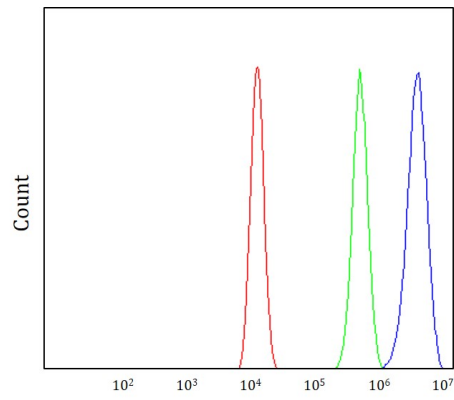
ARG44194 anti-MIS18A antibody ICC/IF image

Immunofluorescence: HeLa stained with ARG44194 anti-MIS18A antibody at 5 µg/mL dilution.



ARG44194 anti-MIS18A antibody WB image

Western blot: 293T, HeLa stained with ARG44194 anti-MIS18A antibody at 0.5 µg/mL dilution.



ARG44194 anti-MIS18A antibody FACS image

Flow Cytometry: HEL stained with ARG44194 anti-MIS18A antibody at $1\text{ }\mu\text{g}/1 \times 10^6$ cells dilution.