

ARG44199 anti-NAPA antibody

Package: 50 µg
Store at: -20°C

Summary

Product Description	Rabbit Polyclonal antibody recognizes NAPA
Tested Reactivity	Hu
Tested Application	FACS, WB
Host	Rabbit
Clonality	Polyclonal
Isotype	IgG
Target Name	NAPA
Species	Human
Immunogen	A synthetic peptide of Human Alpha SNAP/NAPA.
Conjugation	Un-conjugated
Alternate Names	NAPA; NSF Attachment Protein Alpha; N-Ethylmaleimide-Sensitive Factor Attachment Protein, Alpha; Alpha-Soluble NSF Attachment Protein; SNAP; N-Ethylmaleimide-Sensitive Factor Attachment Protein Alpha; Alpha Soluble NSF Attachment Protein; Alpha SNAP; Alpha-SNAP; SNAP-Alpha

Application Instructions

Application table	Application	Dilution
	FACS	1-3 µg/1x10 ⁶ cells
	WB	0.25-0.5 µg/ml
Application Note	* The dilutions indicate recommended starting dilutions and the optimal dilutions or concentrations should be determined by the scientist.	

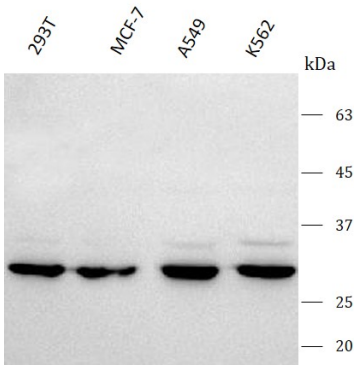
Properties

Form	Liquid
Purification	Affinity purification with immunogen.
Buffer	0.9% NaCl, 0.2% Na ₂ HPO ₄ , 0.05% Sodium azide and 5% BSA.
Preservative	0.05% Sodium azide
Stabilizer	5% BSA
Concentration	0.5 mg/ml
Storage instruction	For continuous use, store undiluted antibody at 2-8°C for up to a week. For long-term storage, aliquot and store at -20°C or below. Storage in frost free freezers is not recommended. Avoid repeated freeze/thaw cycles. Suggest spin the vial prior to opening. The antibody solution should be gently mixed before use.
Note	For laboratory research only, not for drug, diagnostic or other use.

Bioinformation

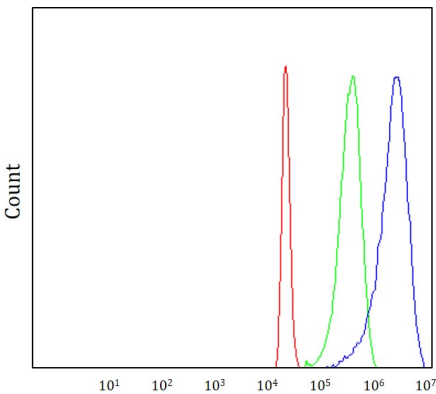
Gene Symbol	NAPA
Gene Full Name	Nsf Attachment Protein Alpha
Background	This gene encodes a member of the soluble NSF attachment protein (SNAP) family. SNAP proteins play a critical role in the docking and fusion of vesicles to target membranes as part of the 20S NSF-SNAP-SNARE complex. The encoded protein plays a role in the completion of membrane fusion by mediating the interaction of N-ethylmaleimide-sensitive factor (NSF) with the vesicle-associated and membrane-associated SNAP receptor (SNARE) complex, and stimulating the ATPase activity of NSF. Alternatively spliced transcript variants have been observed for this gene.
Function	Required for vesicular transport between the endoplasmic reticulum and the Golgi apparatus (Probable). Together with GNA12 promotes CDH5 localization to plasma membrane.
Calculated Mw	33 kDa
PTM	Acetylation, Phosphoprotein
Cellular Localization	Cell membrane, Membrane

Images



ARG44199 anti-NAPA antibody WB image

Western blot: 293T, MCF-7, A549 and K562 stained with ARG44199 anti-NAPA antibody at 0.5 µg/mL dilution.



ARG44199 anti-NAPA antibody FACS image

Flow Cytometry: 293T stained with ARG44199 anti-NAPA antibody at 1 µg/1x10⁶ cells dilution.