

## ARG44200 anti-NAPB antibody

Package: 50 µg  
Store at: -20°C

### Summary

Product Description	Rabbit Polyclonal antibody recognizes NAPB
Tested Reactivity	Ms, Rat
Tested Application	WB
Host	Rabbit
Clonality	Polyclonal
Isotype	IgG
Target Name	NAPB
Species	Mouse
Immunogen	A synthetic peptide corresponding to a sequence of human NAPB.
Conjugation	Un-conjugated
Alternate Names	NAPB; NSF Attachment Protein Beta; SNAPB; SNAP-BETA; N-Ethylmaleimide-Sensitive Factor Attachment Protein, Beta; Beta-Soluble NSF Attachment Protein; N-Ethylmaleimide-Sensitive Factor Attachment Protein Beta; Beta Soluble NSF Attachment Protein; SNAP-Beta; DEE107

### Application Instructions

Application table	Application	Dilution
	WB	0.25-0.5 µg/ml
Application Note	* The dilutions indicate recommended starting dilutions and the optimal dilutions or concentrations should be determined by the scientist.	

### Properties

Form	Liquid
Purification	Affinity purification with immunogen.
Buffer	0.9% NaCl, 0.2% Na <sub>2</sub> HPO <sub>4</sub> , 0.05% Sodium azide and 5% BSA.
Preservative	0.05% Sodium azide
Stabilizer	5% BSA
Concentration	0.5 mg/ml
Storage instruction	For continuous use, store undiluted antibody at 2-8°C for up to a week. For long-term storage, aliquot and store at -20°C or below. Storage in frost free freezers is not recommended. Avoid repeated freeze/thaw cycles. Suggest spin the vial prior to opening. The antibody solution should be gently mixed before use.
Note	For laboratory research only, not for drug, diagnostic or other use.

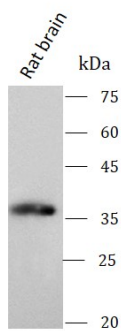
Bioinformation

Gene Symbol	NAPB
Gene Full Name	Nsf Attachment Protein Beta
Background	This gene encodes a member of the soluble N-ethyl-maleimide-sensitive fusion attachment protein (SNAP) family. SNAP proteins play a critical role in the docking and fusion of vesicles to target membranes as part of the 20S NSF-SNAP-SNARE complex. This gene encodes the SNAP beta isoform which has been shown to be preferentially expressed in brain tissue. The encoded protein also interacts with the GluR2 $\alpha$ -amino-3-hydroxy-5-methyl-4-isoxazolepropionate (AMPA) receptor subunit C-terminus and may play a role as a chaperone in the molecular processing of the AMPA receptor.
Function	Required for vesicular transport between the endoplasmic reticulum and the Golgi apparatus.
Calculated Mw	34 kDa
Cellular Localization	Membrane

Images

ARG44200 anti-NAPB antibody WB image

Western blot: Rat brain stained with ARG44200 anti-NAPB antibody at 0.5  $\mu$ g/mL dilution.



ARG44200 anti-NAPB antibody WB image

Western blot: Mouse brain stained with ARG44200 anti-NAPB antibody at 0.5  $\mu$ g/mL dilution.

