

## ARG44206 anti-MPZL1 antibody

Package: 50 µg  
Store at: -20°C

### Summary

Product Description	Rabbit Polyclonal antibody recognizes MPZL1
Tested Reactivity	Hu
Tested Application	WB
Host	Rabbit
Clonality	Polyclonal
Isotype	IgG
Target Name	MPZL1
Species	Human
Immunogen	Recombinant protein of Human MPZL1
Conjugation	Un-conjugated
Alternate Names	GeneCards Symbol: MPZL1; Myelin Protein Zero Like 1; PZR; Myelin Protein Zero-Like Protein 1; FLJ21047; Immunoglobulin Family Transmembrane Protein; Protein Zero Related; Protein Zero-Related; MPZL1b; PZR1b; PZRα; PZRβ

### Application Instructions

Application table	Application	Dilution
	WB	0.25-0.5 µg/ml
Application Note	* The dilutions indicate recommended starting dilutions and the optimal dilutions or concentrations should be determined by the scientist.	

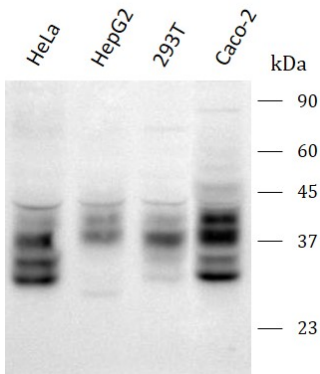
### Properties

Form	Liquid
Purification	Affinity purification with immunogen.
Buffer	0.9% NaCl, 0.2% Na <sub>2</sub> HPO <sub>4</sub> , 0.05% Sodium azide and 5% BSA.
Preservative	0.05% Sodium azide
Stabilizer	5% BSA
Concentration	0.5 mg/ml
Storage instruction	For continuous use, store undiluted antibody at 2-8°C for up to a week. For long-term storage, aliquot and store at -20°C or below. Storage in frost free freezers is not recommended. Avoid repeated freeze/thaw cycles. Suggest spin the vial prior to opening. The antibody solution should be gently mixed before use.
Note	For laboratory research only, not for drug, diagnostic or other use.

Bioinformation

Gene Symbol	MPZL1
Gene Full Name	Myelin Protein Zero Like 1
Background	Predicted to enable structural molecule activity. Predicted to be involved in cell-cell signaling and transmembrane receptor protein tyrosine kinase signaling pathway. Predicted to act upstream of or within positive regulation of cell migration. Located in cell surface and focal adhesion.
Function	Cell surface receptor, which is involved in signal transduction processes. Recruits PTPN11/SHP-2 to the cell membrane and is a putative substrate of PTPN11/SHP-2. Is a major receptor for concanavalin-A (ConA) and is involved in cellular signaling induced by ConA, which probably includes Src family tyrosine-protein kinases. Isoform 3 seems to have a dominant negative role; it blocks tyrosine phosphorylation of MPZL1 induced by ConA. Isoform 1, but not isoform 2 and isoform 3, may be involved in regulation of integrin-mediated cell motility.
Calculated Mw	29 kDa
PTM	Disulfide bond, Glycoprotein, Phosphoprotein
Cellular Localization	Membrane

Images



ARG44206 anti-MPZL1 antibody WB image

Western blot: HeLa, HepG2, 293T and Caco-2 stained with ARG44206 anti-MPZL1 antibody at 0.5 µg/mL dilution.