

## ARG44209 anti-MYH16 antibody

Package: 50 µg  
Store at: -20°C

### Summary

Product Description	Rabbit Polyclonal antibody recognizes MYH16
Tested Reactivity	Hu
Tested Application	FACS, ICC/IF, WB
Host	Rabbit
Clonality	Polyclonal
Isotype	IgG
Target Name	MYH16
Species	Human
Immunogen	Recombinant protein of Human MYH16
Conjugation	Un-conjugated
Alternate Names	MYH16; Myosin Heavy Chain 16 (Pseudogene); MYH16P; MHC20; MYH5; Myosin Heavy Chain 16 Pseudogene; Myosin, Heavy Polypeptide 16; Myosin Heavy Polypeptide 5; Myosin, Heavy Chain 16; Sarcomeric Myosin; Putative Uncharacterized Protein MYH16; Myosin, Heavy Polypeptide 5

### Application Instructions

Application table	Application	Dilution
	FACS	1-3 µg/1x10 <sup>6</sup> cells
	ICC/IF	5 µg/ml
	WB	0.25-0.5 µg/ml
Application Note	* The dilutions indicate recommended starting dilutions and the optimal dilutions or concentrations should be determined by the scientist.	

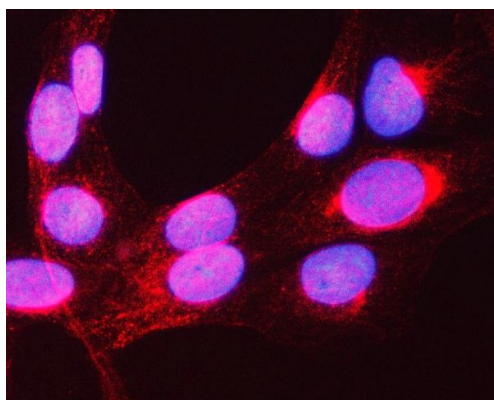
### Properties

Form	Liquid
Purification	Affinity purification with immunogen.
Buffer	0.9% NaCl, 0.2% Na <sub>2</sub> HPO <sub>4</sub> , 0.05% Sodium azide and 5% BSA.
Preservative	0.05% Sodium azide
Stabilizer	5% BSA
Concentration	0.5 mg/ml
Storage instruction	For continuous use, store undiluted antibody at 2-8°C for up to a week. For long-term storage, aliquot and store at -20°C or below. Storage in frost free freezers is not recommended. Avoid repeated freeze/thaw cycles. Suggest spin the vial prior to opening. The antibody solution should be gently mixed before use.

## Bioinformation

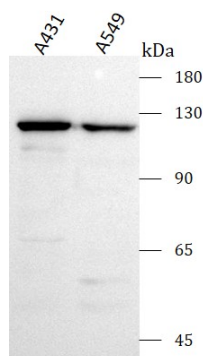
Gene Symbol	MYH16
Gene Full Name	Myosin Heavy Chain 16 Pseudogene
Background	The MYH16 gene, encoding a sarcomeric myosin heavy chain expressed in nonhuman primate masticatory muscles, is inactivated in humans. Stedman et al. (2004) [PubMed 15042088] hypothesized that the decrement in masticatory muscle size caused by the inactivation of MYH16 removed an evolutionary constraint on encephalization in early man.
Function	Has most probably lost the function in masticatory muscles contraction suspected for its homologs in dog (AC F1PT61) and apes.
Calculated Mw	128 kDa

## Images



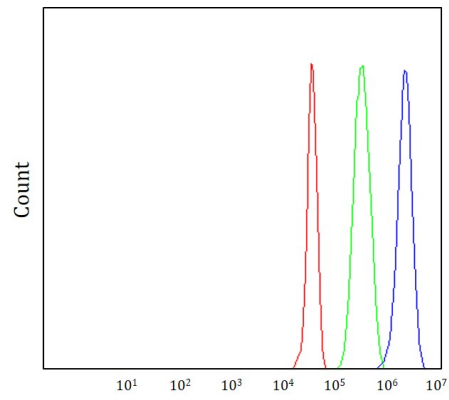
ARG44209 anti-MYH16 antibody ICC/IF image

Immunofluorescence: U2OS stained with ARG44209 anti-MYH16 antibody at 5 µg/mL dilution.



ARG44209 anti-MYH16 antibody WB image

Western blot: A431 and A549 stained with ARG44209 anti-MYH16 antibody at 0.5 µg/mL dilution.



#### ARG44209 anti-MYH16 antibody FACS image

Flow Cytometry: JK stained with ARG44209 anti-MYH16 antibody at  $1\text{ }\mu\text{g}/1\times 10^6$  cells dilution.