

ARG44212 anti-MYO6 antibody

Package: 50 µg
Store at: -20°C

Summary

Product Description	Rabbit Polyclonal antibody recognizes MYO6
Tested Reactivity	Hu, Ms
Tested Application	FACS, WB
Host	Rabbit
Clonality	Polyclonal
Isotype	IgG
Target Name	MYO6
Species	Human
Immunogen	Recombinant protein of Human MYO6
Conjugation	Un-conjugated
Alternate Names	MYO6; Myosin VI; KIAA0389; Unconventional Myosin-VI; Unconventional Myosin-6; DFNA22; DFNB37; Deafness, Autosomal Recessive 37

Application Instructions

Application table	Application	Dilution
	FACS	1-3 µg/1x10 ⁶ cells
	WB	0.25-0.5 µg/ml

Application Note * The dilutions indicate recommended starting dilutions and the optimal dilutions or concentrations should be determined by the scientist.

Properties

Form	Liquid
Purification	Affinity purification with immunogen.
Buffer	0.9% NaCl, 0.2% Na ₂ HPO ₄ , 0.05% Sodium azide and 5% BSA.
Preservative	0.05% Sodium azide
Stabilizer	5% BSA
Concentration	0.5 mg/ml
Storage instruction	For continuous use, store undiluted antibody at 2-8°C for up to a week. For long-term storage, aliquot and store at -20°C or below. Storage in frost free freezers is not recommended. Avoid repeated freeze/thaw cycles. Suggest spin the vial prior to opening. The antibody solution should be gently mixed before use.
Note	For laboratory research only, not for drug, diagnostic or other use.

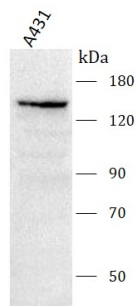
Bioinformation

Gene Symbol	MYO6
Gene Full Name	Myosin Vi
Background	This gene encodes a reverse-direction motor protein that moves toward the minus end of actin filaments and plays a role in intracellular vesicle and organelle transport. The protein consists of a motor domain containing an ATP- and an actin-binding site and a globular tail which interacts with other proteins. This protein maintains the structural integrity of inner ear hair cells and mutations in this gene cause non-syndromic autosomal dominant and recessive hearing loss. Alternative splicing results in multiple transcript variants encoding distinct isoforms.
Function	Myosins are actin-based motor molecules with ATPase activity.
Calculated Mw	150 kDa
PTM	Phosphoprotein
Cellular Localization	Cell membrane, Cell projection, Coated pit, #Cytoplasm, Cytoplasmic vesicle, Endosome, Golgi apparatus, Membrane, Nucleus

Images

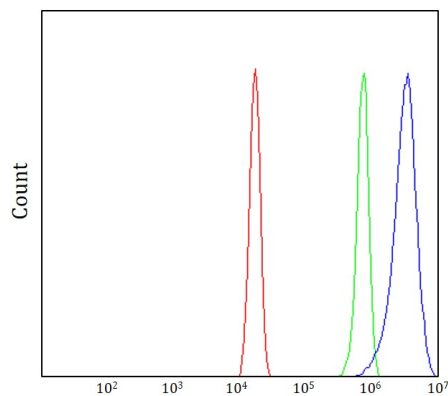
ARG44212 anti-MYO6 antibody WB image

Western blot: A431 stained with ARG44212 anti-MYO6 antibody at 0.5 µg/mL dilution.



ARG44212 anti-MYO6 antibody FACS image

Flow Cytometry: HeLa stained with ARG44212 anti-MYO6 antibody at 1 µg/1x10⁶ cells dilution.



ARG44212 anti-MYO6 antibody WB image

Western blot: Mouse brain stained with ARG44212 anti-MYO6 antibody at 0.5 $\mu\text{g}/\text{mL}$ dilution.

