

ARG44224 anti-L1TD1 antibody

Package: 50 µg
Store at: -20°C

Summary

Product Description	Rabbit Polyclonal antibody recognizes L1TD1
Tested Reactivity	Hu, Ms, Rat
Tested Application	WB
Host	Rabbit
Clonality	Polyclonal
Isotype	IgG
Target Name	L1TD1
Species	Human
Immunogen	Recombinant protein of Human L1TD1
Conjugation	Un-conjugated
Alternate Names	L1TD1; LINE1 Type Transposase Domain Containing 1; ECAT11; LINE-1 Type Transposase Domain-Containing Protein 1; ES Cell-Associated Protein 11; FLJ10884; LINE-1 Type Transposase Domain Containing 1

Application Instructions

Application table	Application	Dilution
	WB	0.25-0.5 µg/ml
Application Note	* The dilutions indicate recommended starting dilutions and the optimal dilutions or concentrations should be determined by the scientist.	

Properties

Form	Liquid
Purification	Affinity purification with immunogen.
Buffer	0.9% NaCl, 0.2% Na2HPO4, 0.05% Sodium azide and 5% BSA.
Preservative	0.05% Sodium azide
Stabilizer	5% BSA
Concentration	0.5 mg/ml
Storage instruction	For continuous use, store undiluted antibody at 2-8°C for up to a week. For long-term storage, aliquot and store at -20°C or below. Storage in frost free freezers is not recommended. Avoid repeated freeze/thaw cycles. Suggest spin the vial prior to opening. The antibody solution should be gently mixed before use.
Note	For laboratory research only, not for drug, diagnostic or other use.

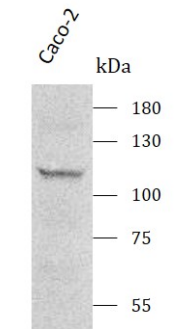
Bioinformation

Gene Symbol	L1TD1
Gene Full Name	Line1 Type Transposase Domain Containing 1
Background	Predicted to enable single-stranded RNA binding activity. Predicted to be involved in transposition, RNA-mediated. Located in intracellular membrane-bounded organelle.
Calculated Mw	99 kDa
PTM	Acetylation, Phosphoprotein

Images

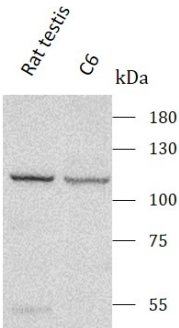
ARG44224 anti-L1TD1 antibody WB image

Western blot: Caco-2 stained with ARG44224 anti-L1TD1 antibody at 0.5 µg/mL dilution.



ARG44224 anti-L1TD1 antibody WB image

Western blot: Rat testis and C6 stained with ARG44224 anti-L1TD1 antibody at 0.5 µg/mL dilution.



ARG44224 anti-L1TD1 antibody WB image

Western blot: NIH/3T3 and RAW264.7 stained with ARG44224 anti-L1TD1 antibody at 0.5 µg/mL dilution.

