

ARG44250 anti-PTPN22 antibody

Package: 50 µg
Store at: -20°C

Summary

Product Description	Goat Polyclonal antibody recognizes PTPN22
Tested Reactivity	Hu, Chimp
Tested Application	FACS, ICC/IF, IHC-P
Specificity	This antibody is specific for human LYP1 and will not cross to LYP2
Host	Goat
Clonality	Polyclonal
Isotype	IgG
Target Name	PTPN22
Species	Human
Immunogen	Synthetic peptide around the internal region of Human PTPN22 (CPPNKPAESVQSNN)
Conjugation	Un-conjugated
Alternate Names	LYP1; Lymphoid phosphatase; LYP2; LYP; Hematopoietic cell protein-tyrosine phosphatase 70Z-PEP; PEP; PTPN8; Tyrosine-protein phosphatase non-receptor type 22; PEST-domain phosphatase; LyP; EC 3.1.3.48

Application Instructions

Application table	Application	Dilution
	FACS	10 µg/ml
	ICC/IF	10 µg/ml
	IHC-P	3.75 µg/ml
Application Note	* The dilutions indicate recommended starting dilutions and the optimal dilutions or concentrations should be determined by the scientist.	

Properties

Form	Liquid
Purification	Affinity purified
Buffer	Tris saline (pH 7.3), 0.02% Sodium azide and 0.5% BSA.
Preservative	0.02% Sodium azide
Stabilizer	0.5% BSA
Concentration	0.5 mg/ml
Storage instruction	For continuous use, store undiluted antibody at 2-8°C for up to a week. For long-term storage, aliquot and store at -20°C or below. Storage in frost free freezers is not recommended. Avoid repeated freeze/thaw cycles. Suggest spin the vial prior to opening. The antibody solution should be gently mixed

before use.

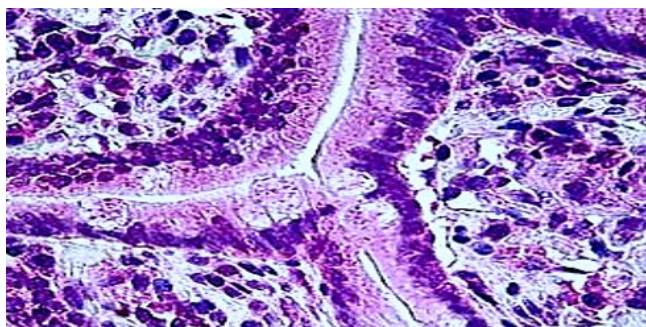
Note

For laboratory research only, not for drug, diagnostic or other use.

Bioinformation

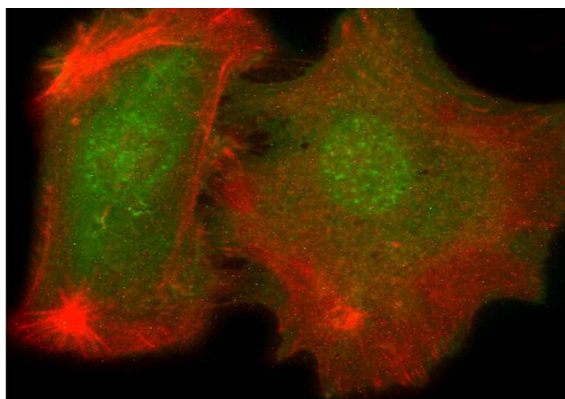
Gene Symbol	PTPN22
Gene Full Name	protein tyrosine phosphatase, non-receptor type 22 (lymphoid)
Background	This gene encodes of member of the non-receptor class 4 subfamily of the protein-tyrosine phosphatase family. The encoded protein is a lymphoid-specific intracellular phosphatase that associates with the molecular adapter protein CBL and may be involved in regulating CBL function in the T-cell receptor signaling pathway. Mutations in this gene may be associated with a range of autoimmune disorders including Type 1 Diabetes, rheumatoid arthritis, systemic lupus erythematosus and Graves' disease. Alternatively spliced transcript variants encoding distinct isoforms have been described. [provided by RefSeq, Mar 2009]
Function	Acts as negative regulator of T-cell receptor (TCR) signaling by direct dephosphorylation of the Src family kinases LCK and FYN, ITAMs of the TCR α /CD3 complex, as well as ZAP70, VAV, VCP and other key signaling molecules. Associates with and probably dephosphorylates CBL. Dephosphorylates LCK at its activating 'Tyr-394' residue. Dephosphorylates ZAP70 at its activating 'Tyr-493' residue. Dephosphorylates the immune system activator SKAP2. Positively regulates toll-like receptor (TLR)-induced type 1 interferon production. Promotes host antiviral responses mediated by type 1 interferon (By similarity). Regulates NOD2-induced pro-inflammatory cytokine secretion and autophagy. [UniProt]
Calculated Mw	92 kDa
PTM	Phosphorylation on Ser-35 by PKC/PRKCD abrogates its ability to dephosphorylate and inactivate the SRC family kinases. [UniProt]
Cellular Localization	Cytoplasm. [UniProt]

Images



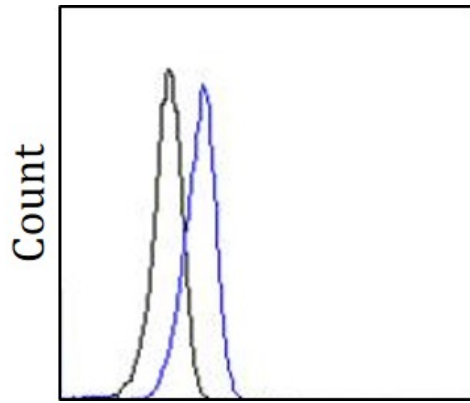
ARG44250 anti-PTPN22 antibody IHC-P image

Immunohistochemistry: Human Small Intestine stained with ARG44250 anti-PTPN22 antibody at 3.75 μ g/ml dilution.



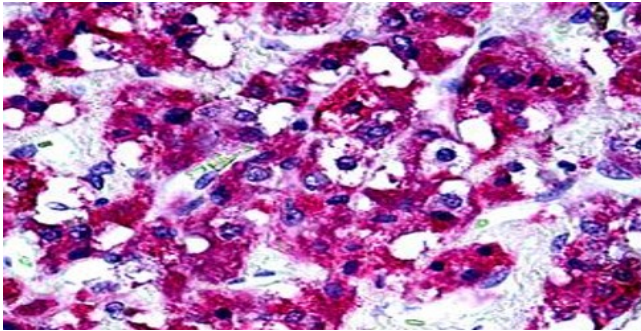
ARG44250 anti-PTPN22 antibody ICC/IF image

Immunofluorescence: U2OS stained with ARG44250 anti-PTPN22 antibody at 10 μ g/ml dilution.



ARG44250 anti-PTPN22 antibody FACS image

Flow Cytometry: Jurkat stained with ARG44250 anti-PTPN22 antibody at 10 μ g/ml dilution.



ARG44250 anti-PTPN22 antibody IHC-P image

Immunohistochemistry: Human Adrenal Gland stained with ARG44250 anti-PTPN22 antibody at 3.75 μ g/ml dilution.