

ARG44269 anti-KLF2 antibody

Package: 50 µg
Store at: -20°C

Summary

Product Description	Goat Polyclonal antibody recognizes KLF2
Tested Reactivity	Hu
Tested Application	IHC-P, WB
Host	Goat
Clonality	Polyclonal
Isotype	IgG
Target Name	KLF2
Species	Human
Immunogen	Synthetic peptide around the internal region of Human KLF2 (SPLELLEAKPKRGC)
Conjugation	Un-conjugated
Alternate Names	KLF2; KLF Transcription Factor 2; LKLF; Kruppel-Like Factor 2 (Lung); Lung Krueppel-Like Factor; Lung Kruppel-Like Factor; Krueppel-Like Factor 2; Kruppel Like Factor 2; Lung Kruppel-Like Zinc Finger Transcription Factor; Kruppel-Like Factor LKLF

Application Instructions

Application table	Application	Dilution
	IHC-P	6 µg/ml
	WB	0.1 µg/ml
Application Note	* The dilutions indicate recommended starting dilutions and the optimal dilutions or concentrations should be determined by the scientist.	

Properties

Form	Liquid
Purification	Affinity purified
Buffer	Tris saline (pH 7.3), 0.02% Sodium azide and 0.5% BSA.
Preservative	0.02% Sodium azide
Stabilizer	0.5% BSA
Concentration	0.5 mg/ml
Storage instruction	For continuous use, store undiluted antibody at 2-8°C for up to a week. For long-term storage, aliquot and store at -20°C or below. Storage in frost free freezers is not recommended. Avoid repeated freeze/thaw cycles. Suggest spin the vial prior to opening. The antibody solution should be gently mixed before use.
Note	For laboratory research only, not for drug, diagnostic or other use.

Bioinformation

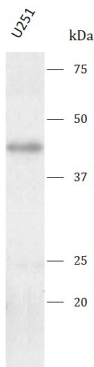
Gene Symbol	KLF2
Gene Full Name	KLF Transcription Factor 2
Background	This gene encodes a protein that belongs to the Kruppel family of transcription factors. The encoded zinc finger protein is expressed early in mammalian development and is found in many different cell types. The protein acts to bind the CACCC box found in the promoter of target genes to activate their transcription. It plays a role in many processes during development and disease including adipogenesis, embryonic erythropoiesis, epithelial integrity, inflammation and t-cell viability.
Function	Might be involved in transcriptional regulation by modulating the binding of the RARA nuclear receptor to RARE DNA elements.
PTM	Phosphoprotein, Ubl conjugation
Cellular Localization	Nucleus

Images



ARG44269 anti-KLF2 antibody IHC-P image

Immunohistochemistry: Human Colon stained with ARG44269 anti-KLF2 antibody at 6 µg/ml dilution.



ARG44269 anti-KLF2 antibody WB image

Western blot: U251 stained with ARG44269 anti-KLF2 antibody at 0.1 µg/ml dilution.