

ARG44272 anti-PRAS40 (Thr356) antibody

Package: 50 µl
Store at: -20°C

Summary

Product Description	Rabbit Polyclonal antibody recognizes PRAS40 phospho (Thr356)
Tested Reactivity	Dm
Tested Application	WB
Host	Rabbit
Clonality	Polyclonal
Isotype	IgG
Target Name	PRAS40
Species	Drosophila
Immunogen	Synthetic phospho-peptide
Conjugation	Un-conjugated
Alternate Names	AKT1S1; AKT1 Substrate 1; PRAS40; 40 KDa Proline-Rich AKT Substrate; Proline-Rich AKT1 Substrate 1; MGC2865; Lobe; Proline-Rich Akt Substrate, 40 Kda; AKT1 Substrate 1 (Proline-Rich); AKT1 Substrate 1 (Proline Rich); LOBE

Application Instructions

Application table	Application	Dilution
	WB	1:1000
Application Note	* The dilutions indicate recommended starting dilutions and the optimal dilutions or concentrations should be determined by the scientist.	

Properties

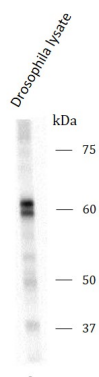
Form	Liquid
Purification	Antigen Affinity Purified
Buffer	10 mM HEPES (pH 7.5), 150 mM NaCl, 50% Glycerol and 100 µg/ml BSA.
Stabilizer	50% Glycerol and 100 µg/ml BSA
Storage instruction	For continuous use, store undiluted antibody at 2-8°C for up to a week. For long-term storage, aliquot and store at -20°C. Storage in frost free freezers is not recommended. Avoid repeated freeze/thaw cycles. Suggest spin the vial prior to opening. The antibody solution should be gently mixed before use.
Note	For laboratory research only, not for drug, diagnostic or other use.

Bioinformation

Gene Symbol	AKTS1
-------------	-------

Gene Full Name	AKT1 Substrate 1
Background	AKT1S1 is a proline-rich substrate of AKT (MIM 164730) that binds 14-3-3 protein (see YWHAH, MIM 113508) when phosphorylated.
Calculated Mw	61 kDa

Images



ARG44272 anti-PRAS40 (Thr356) antibody WB image

Western blot: Drosophila lysate stained with ARG44272 anti-PRAS40 (Thr356) antibody.