

## ARG44282 anti-Connexin 35 / 36 (Ser276) antibody

Package: 50 µl  
Store at: -20°C

### Summary

Product Description	Rabbit Polyclonal antibody recognizes Connexin 35/36 phospho (Ser276)
Tested Reactivity	Ms, Fsh, Rb
Tested Application	IHC-P, WB
Host	Rabbit
Clonality	Polyclonal
Isotype	IgG
Target Name	Connexin 35/36
Immunogen	Synthetic phospho-peptide
Conjugation	Un-conjugated
Alternate Names	GJD2; Gap Junction Protein Delta 2; CX36; GJA9; Gap Junction Protein, Delta 2, 36kDa; Gap Junction Delta-2 Protein; Gap Junction Alpha-9 Protein; Connexin-36; Gap Junction Protein, Alpha 9, 36kDa; Connexin 36; Cx36

### Application Instructions

Application table	Application	Dilution
	IHC-P	1:500
	WB	1:1000
Application Note	* The dilutions indicate recommended starting dilutions and the optimal dilutions or concentrations should be determined by the scientist.	

### Properties

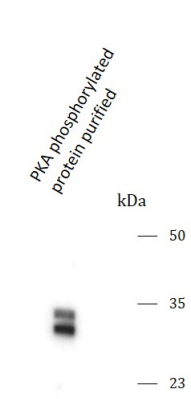
Form	Liquid
Purification	Antigen Affinity Purified
Buffer	10 mM HEPES (pH 7.5), 150 mM NaCl, 50% Glycerol and 100 µg/ml BSA.
Stabilizer	50% Glycerol and 100 µg/ml BSA
Storage instruction	For continuous use, store undiluted antibody at 2-8°C for up to a week. For long-term storage, aliquot and store at -20°C. Storage in frost free freezers is not recommended. Avoid repeated freeze/thaw cycles. Suggest spin the vial prior to opening. The antibody solution should be gently mixed before use.
Note	For laboratory research only, not for drug, diagnostic or other use.

### Bioinformation

Gene Symbol	GJD2
-------------	------

Gene Full Name	Gap Junction Protein Delta 2
Background	This gene encodes a member of the connexin protein family. Connexins are gap junction proteins which are arranged in groups of 6 around a central pore to form a connexon, a component of the gap junction intercellular channel. The channels formed by this protein allow cationic molecule exchange between human beta cells and may function in the regulation of insulin secretion.
Function	One gap junction consists of a cluster of closely packed pairs of transmembrane channels, the connexons, through which materials of low MW diffuse from one cell to a neighboring cell.
Cellular Localization	Cell junction; Cell membrane; Gap junction; Membrane

Images



ARG44282 anti-Connexin 35 / 36 (Ser276) antibody WB image

Western blot: PKA phosphorylated purified protein stained with ARG44282 anti-Connexin 35 / 36 (Ser276) antibody.